



**BMW 2 Active Tourer: 1JAL523**

Vinnumber:	<b>WBA2C11000V337403</b>	Versionname:	<b>2 ACTIVE TOURER 218dA 136PK Aut.</b>
First Registrationdate:	<b>18/11/2014</b>	Fiscalpower:	
Expertise Mileage:	<b>175360</b>	Power Kw:	<b>100</b>
Bodytype:		Body color:	<b>Black</b>
Gearbox:	<b>Automatic</b>	Paint type:	<b>Metallic</b>
Transmission:	<b>Front</b>	Rims summer:	<b>Aluminium</b>
Fueltype:	<b>Diesel</b>	Oil level:	<b>OK</b>
Battery functioning:	<b>Yes</b>	Parking lot:	<b>4705</b>
Number of doors:	<b>5</b>		
Number of seats:	<b>5</b>		
Number head rests:	<b>5</b>		
Rims summer:	<b>Aluminium</b>		
Category:	<b>Passenger Car</b>		
Oil level:	<b>OK</b>		
Registration Certificate Car (BE):	<b>Yes</b>		

**Options**

Windows electric F	Seats electric F L
Windows electric R	Seats electric F R
Cruise Control	Central consol F
Steering wheel multifunctional	Luggage cover
Seats F heated	Rear parking sensors
Radio multimedia	Type of Tow bar
Type of headlighting	<b>Headlighting Halogen</b>
Type of GPS	<b>GPS big screen color</b>
Type of Lining	<b>Lining leather</b>
Type of climate control	<b>Autom climate control</b>
	<b>No Tow bar</b>

**Limited Technical Inspection**

Airco functioning	<b>OK</b>	Battery functioning	<b>Yes</b>
Tires wear profile	<b>OK</b>	Power steering	<b>Yes</b>
Idle position	<b>OK</b>	Sound engine	<b>OK</b>
Engine startingtime	<b>OK</b>	Clutch test	<b>OK</b>
Exhaust gass	<b>OK</b>	Wiper fluid level	<b>OK</b>
Handbrake	<b>OK</b>	Transmission	<b>OK</b>
		Lighting	<b>OK</b>
		Wiperblades	<b>OK</b>

**Degree of wear**

	<b>205/60/16/92 V LightMetal</b>			
Summer tyres:	Fr.L.	<b>Continental: 5 mm</b>	Fr.R.	<b>Continental: 5 mm</b>
	Re.L.	<b>Continental: 5 mm</b>	Re.R.	<b>Continental: 5 mm</b>

**Assistance equipment**

Number of charging cables (normal)	<b>0</b>
Number of charging cables (rapid charge)	<b>0</b>

Total cost ex VAT	<b>2018,46</b>
Door F R, Scratch(es), Acceptable	<b>0,00</b>
<i>No pictures to display</i>	
Wing F R, Scratch(es), LI - Repair and paint (complete)	<b>220,18</b>



Bumper R, Crack, Le - Replace and paint

651,00



Bonnet, Chemical pollution, LI - Repair and paint (complete)

290,08



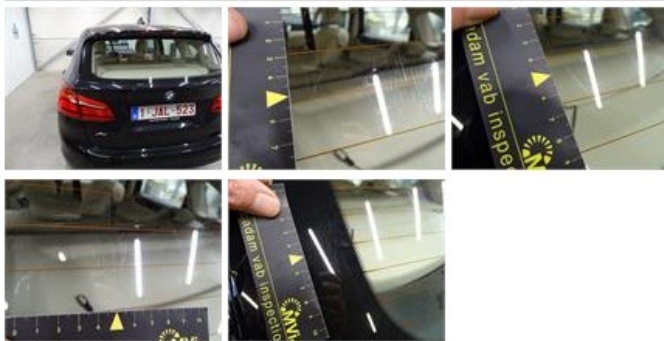
Door F L, Dent(s) and scratch(es), Acceptable

0,00

No pictures to display

Rear window, Scratch(es), E - Replace

370,00



Alloy rim F L polished, Scratch(es), Acceptable

0,00

No pictures to display

Windscreen, Crack, E - Replace

487,20

