



**VOLVO V60: 1KET275**

Vinnumber:	<b>VV1FW73C1F1269669</b>	Versionname:	<b>2.0 D4 133KW SUMMUM</b>
First Registrationdate:	<b>16/04/2015</b>	Fiscalpower:	
Expertise Mileage:	<b>69517</b>	Power Kw:	<b>133</b>
Bodytype:	<b>Break</b>	Body color:	<b>Black</b>
Gearbox:	<b>MAN 6 VIT</b>	Paint type:	<b>Metalic</b>
Transmission:		Rims summer:	<b>Aluminium</b>
Fueltype:	<b>Diesel</b>	Oil level:	<b>OK</b>
Battery functioning:	<b>Yes</b>	Parking lot:	<b>2412</b>
Number of doors:	<b>5</b>		
Number of seats:	<b>5</b>		
Number head rests:	<b>5</b>		
Rims summer:	<b>Aluminium</b>		
Category:	<b>Passenger Car</b>		
Oil level:	<b>OK</b>		
Registration Certificate Car (BE):	<b>Yes</b>		

**Options**

Radio CD	Central consol F	
Windows electric F	Luggage cover	
Windows electric R	Rear parking sensors	
Cruise Control	Type of Tow bar	<b>No Tow bar</b>
Steering wheel multifunctional		
Radio multimedia		
Type of headlighting	<b>Headlighting Halogen</b>	
Type of GPS	<b>GPS big screen color</b>	
Type of Lining	<b>Lining leather</b>	
Type of climate control	<b>Autom climate control</b>	

**Limited Technical Inspection**

Airco functioning	<b>OK</b>	Battery functioning	<b>Yes</b>
Tires wear profile	<b>OK</b>	Power steering	<b>Yes</b>
Idle position	<b>OK</b>	Sound engine	<b>OK</b>
Engine startingtime	<b>OK</b>	Clutch test	<b>OK</b>
Exhaust gass	<b>OK</b>	Wiper fluid level	<b>OK</b>
Handbrake	<b>OK</b>	Transmission	<b>OK</b>
		Lighting	<b>OK</b>
		Wiperblades	<b>OK</b>

**Degree of wear**

	<b>215/50/17/95 V LightMetal</b>			
Summer tyres:	Fr.L.	<b>Goodyear: 6 mm</b>	Fr.R.	<b>Goodyear: 6 mm</b>
	Re.L.	<b>Goodyear: 9 mm</b>	Re.R.	<b>Goodyear: 9 mm</b>

**Assistance equipment**

Repair kit	<b>Yes</b>	Compressor	<b>Yes</b>
------------	------------	------------	------------

<b>Total cost ex VAT</b>	<b>1210,66</b>
--------------------------	----------------

<b>Bumper F, Scratch(es), LI - Repair and paint (complete)</b>	<b>211,80</b>
--	---------------



Rocker panel inner R L, Dent(s), LI - Repair and paint (complete)

115,56



Alloy rim F L, Scratch(es), LI - Repair and paint (complete)

95,00



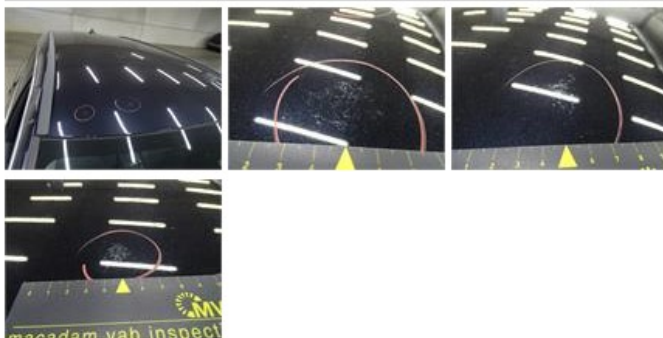
Bumper R, Scratch(es), LI - Repair and paint (complete)

211,80



Roof, Chemical pollution, LI - Repair and paint (complete)

481,50



Alloy rim F R, Scratch(es), LI - Repair and paint (complete)

95,00



Wing R R, Dent(s), Acceptable

0,00

No pictures to display

Bonnet, Stone chip(s), Acceptable

0,00

No pictures to display