



BMW 2 ACTIVE TOURER: 1KBR353

Vinnumber:	WBA2B31010V381215	Versionname:	1.5 216D ACTIVE TOURER
First Registrationdate:	26/03/2015	Fiscalpower:	
Expertise Mileage:	75574	Power Kw:	85
Bodytype:		Body color:	Dark Blue
Gearbox:	MAN 6 VIT	Paint type:	Metalic
Transmission:		Rims summer:	Aluminium
Fueltype:	Diesel	Oil level:	OK
Battery functioning:	Yes	Parking lot:	2313
Number of doors:	5		
Number of seats:	5		
Number head rests:	5		
Rims summer:	Aluminium		
Category:	Passenger Car		
Oil level:	OK		
Registration Certificate Car (BE):	Yes		

Options

Radio CD	Sun Roof electric
Windows electric F	Panoramic roof
Windows electric R	Central consol F
Cruise Control	Luggage cover
Steering wheel multifunctional	Rear parking sensors
Radio multimedia	Type of Tow bar
Type of headlighting	Headlighting Halogen
Type of GPS	GPS big screen color
Type of Lining	Lining leather
Type of climate control	Autom climate control
	Tow bar removable

Limited Technical Inspection

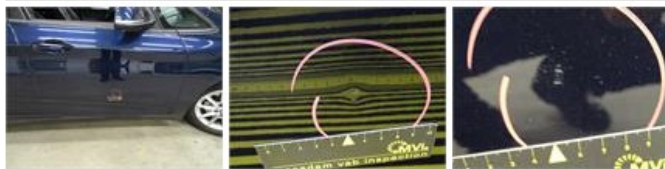
Airco functioning	OK	Battery functioning	Yes
Tires wear profile	OK	Power steering	Yes
Idle position	OK	Sound engine	OK
Engine startingtime	OK	Clutch test	OK
Exhaust gass	OK	Wiper fluid level	OK
Handbrake	OK	Transmission	OK
		Lighting	OK
		Wiperblades	OK

Degree of wear

	205/60/16/92 H LightMetal			
Winter tyres:	Fr.L.	Continental: 7 mm	Fr.R.	Continental: 7 mm
	Re.L.	Continental: 6 mm	Re.R.	Continental: 6 mm

Assistance equipment

Repair kit	Yes	Compressor	Yes
Total cost ex VAT			911,50
Door F R, Dent(s) and scratch(es), LI - Repair and paint (complete)			318,35



Bumper F, Dent(s), LI - Repair and paint (complete)

211,80



Door R R, Scratch(es), Acceptable

0,00

No pictures to display

Door R L, Scratch(es), LI - Repair and paint (complete)

0,00



Wing R R, Dent(s), Acceptable

0,00

No pictures to display

Door F L, Dent(s) and scratch(es), LI - Repair and paint (complete)

318,35



Bonnet, Dent(s), PDR - Paintless dent repair

63,00

