



**FORD Transit Connect LWB: 1GTE286**

Vinnumber:	<b>WF05XXWPGSES76989</b>	Versionname:	<b>TRANS.CON.LWB T210 Trend 95PK</b>
First Registrationdate:	<b>23/04/2014</b>	Fiscalpower:	
Expertise Mileage:	<b>125277</b>	Power Kw:	<b>71</b>
Bodytype:	<b>Transporter</b>	Body color:	<b>White</b>
Gearbox:	<b>MAN 5 VIT</b>	Paint type:	<b>Metalic</b>
Transmission:		Rims summer:	<b>Steel</b>
Fueltype:	<b>Diesel</b>	Oil level:	<b>OK</b>
Battery functioning:	<b>Yes</b>	Parking lot:	<b>1324</b>
Number of doors:	<b>5</b>		
Number of seats:	<b>3</b>		
Number head rests:	<b>3</b>		
Rims summer:	<b>Steel</b>		
Category:	<b>Light Commercial Vehicle</b>		
Oil level:	<b>OK</b>		
Registration Certificate Car (BE):	<b>Yes</b>		

**Options**

Windows electric F	Type of Tow bar	<b>Tow bar fixed</b>
Steering wheel multifunctional		
Radio multimedia		
Type of headlighting	<b>Headlighting Halogen</b>	
Type of GPS	<b>No GPS</b>	
Type of Lining	<b>Lining fabrics</b>	
Type of climate control	<b>Manual climate control</b>	

**Limited Technical Inspection**

Airco functioning	<b>OK</b>	Battery functioning	<b>Yes</b>
Tires wear profile	<b>OK</b>	Power steering	<b>Yes</b>
Idle position	<b>OK</b>	Sound engine	<b>OK</b>
Engine startingtime	<b>OK</b>	Clutch test	<b>OK</b>
Exhaust gass	<b>OK</b>	Wiper fluid level	<b>OK</b>
Handbrake	<b>OK</b>	Transmission	<b>OK</b>
		Lighting	<b>OK</b>
		Wiperblades	<b>OK</b>

**Degree of wear**

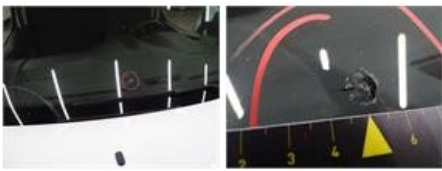
<b>205/60/16/96 H Steel</b>				
Summer tyres:	Fr.L.	<b>Michelin: 1 mm</b>	Fr.R.	<b>Michelin: 1 mm</b>
	Re.L.	<b>Michelin: 5 mm</b>	Re.R.	<b>Michelin: 5 mm</b>

**Assistance equipment**

Total cost ex VAT	<b>389,97</b>
Trunk door R R, Dent(s) and scratch(es), It - Spot repair	<b>115,56</b>



Windscreen, Stone chip(s), Acceptable	<b>0,00</b>
---------------------------------------	-------------



Wheel cover R R, Scratch(es), Acceptable 0,00

No pictures to display

Wing R L, Repaired, Acceptable 0,00

No pictures to display

Wheel cover F R, Scratch(es), Acceptable 0,00

No pictures to display

Bumper F, Scratch(es), LI - Repair and paint (complete) 158,85



Trunk door R L, Dent(s) and scratch(es), It - Spot repair 115,56

