



**BMW 2 ACTIVE TOURER: 1LBG641**

Vinnumber:	<b>WBA2B31060V614165</b>	Versionname:	<b>1.5 216D ACTIVE TOURER</b>
First Registrationdate:	<b>10/08/2015</b>	Fiscalpower:	
Expertise Mileage:	<b>165578</b>	Power Kw:	<b>85</b>
Bodytype:		Body color:	<b>Grey</b>
Gearbox:	<b>MAN 6 VIT</b>	Paint type:	<b>Metalic</b>
Transmission:	<b>Front</b>	Rims summer:	<b>Aluminium</b>
Fueltype:	<b>Diesel</b>	Oil level:	<b>OK</b>
Battery functioning:	<b>Yes</b>	Parking lot:	<b>4332</b>
Number of doors:	<b>5</b>		
Number of seats:	<b>5</b>		
Number head rests:	<b>5</b>		
Rims summer:	<b>Aluminium</b>		
Category:	<b>Passenger Car</b>		
Oil level:	<b>OK</b>		
Registration Certificate Car (BE):	<b>Yes</b>		

**Options**

Windows electric F	Central consol F
Windows electric R	Luggage cover
Cruise Control	Front parking sensors
Steering wheel multifunctional	Rear parking sensors
Radio multimedia	Type of Tow bar
Type of headlighting	<b>Headlighting Halogen</b>
Type of GPS	<b>GPS big screen color</b>
Type of Lining	<b>Lining leather</b>
Type of climate control	<b>Autom climate control</b>
	<b>No Tow bar</b>

**Limited Technical Inspection**

Airco functioning	<b>OK</b>	Battery functioning	<b>Yes</b>
Tires wear profile	<b>OK</b>	Power steering	<b>Yes</b>
Idle position	<b>OK</b>	Sound engine	<b>OK</b>
Engine startingtime	<b>OK</b>	Clutch test	<b>OK</b>
Exhaust gass	<b>OK</b>	Wiper fluid level	<b>OK</b>
Handbrake	<b>OK</b>	Transmission	<b>OK</b>
		Lighting	<b>OK</b>
		Wiperblades	<b>OK</b>

**Degree of wear**

	<b>205/60/16/92 V LightMetal</b>			
Summer tyres:	Fr.L.	<b>Michelin: 5 mm</b>	Fr.R.	<b>Michelin: 5 mm</b>
	Re.L.	<b>Michelin: 6 mm</b>	Re.R.	<b>Michelin: 6 mm</b>

**Assistance equipment**

Repair kit	<b>Yes</b>	Compressor	<b>Yes</b>
------------	------------	------------	------------

Total cost ex VAT	<b>861,50</b>
-------------------	---------------

Tailgate, Scratch(es), Acceptable	<b>0,00</b>
-----------------------------------	-------------

*No pictures to display*

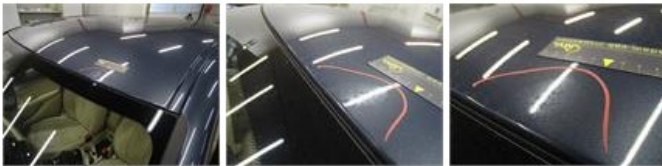
Alloy rim F R, Scratch(es), LI - Repair and paint (complete)	<b>95,00</b>
--	--------------



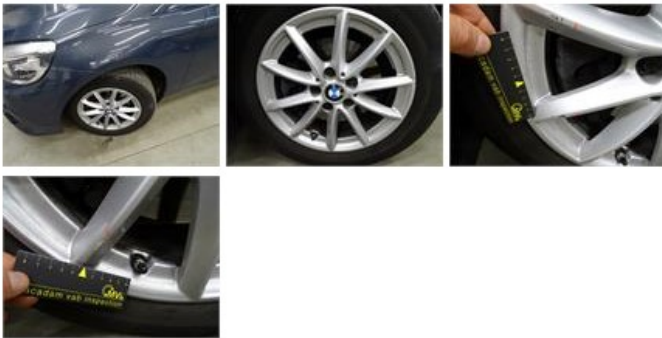
Alloy rim R L, Scratch(es), LI - Repair and paint (complete) 95,00



Roof, Chemical polution, LI - Repair and paint (complete) 481,50



Alloy rim F L, Scratch(es), LI - Repair and paint (complete) 95,00



Ignition key, Worn, Acceptable 0,00

No pictures to display

Roof pillar L, Dent(s), Acceptable 0,00

No pictures to display

Bumper R, Scratch(es), Acceptable 0,00

No pictures to display

Door R R, Scratch(es), Acceptable 0,00

No pictures to display

Alloy rim R R, Scratch(es), LI - Repair and paint (complete) 95,00

