



SEAT ALHAMBRA: 1JXR434

Vinnumber:	VSSZZZ7NZFV516488	Versionname:	2.0 TDI 100KW REFERENCE ECOMOTIVE
First Registrationdate:	13/03/2015	Fiscalpower:	
Expertise Mileage:	85334	Power Kw:	100
Bodytype:	MPV	Body color:	Blue
Gearbox:	MAN 6 VIT	Paint type:	Metalic
Transmission:	Front	Rims summer:	Steel
Fueltype:	Diesel	Oil level:	OK
Battery functioning:	Yes	Parking lot:	4119
Number of doors:	5		
Number of seats:	7		
Number head rests:	7		
Rims summer:	Steel		
Category:	Passenger Car		
Oil level:	OK		
Registration Certificate Car (BE):	Yes		

Options

Radio CD		Central consol F	
GPS storage		Luggage cover	
GPS storage	HD	Type of Tow bar	Tow bar removable
Windows electric F			
Windows electric R			
Type of headlighting	Headlighting Halogen		
Type of GPS	GPS portable		
Type of Lining	Lining fabrics		
Type of climate control	Autom climate control		

Limited Technical Inspection

Airco functioning	OK	Battery functioning	Yes
Tires wear profile	OK	Power steering	Yes
Idle position	OK	Sound engine	OK
Engine startingtime	OK	Clutch test	OK
Exhaust gass	OK	Wiper fluid level	OK
Handbrake	OK	Transmission	OK
		Lighting	OK
		Wiperblades	OK

Degree of wear

205/60/16/96 H LightMetal				
Winter tyres:	Fr.L.	Continental: 2 mm	Fr.R.	Continental: 2 mm
	Re.L.	Continental: 4 mm	Re.R.	Continental: 4 mm

Assistance equipment

Number of charging cables (normal)	0
Number of charging cables (rapid charge)	0

Total cost ex VAT	1991,21
Seat cover F L, Stain, Cleaning	25,00



Door R L, Scratch(es), Acceptable 0,00

No pictures to display

Rearview mirror housing R, Scratch(es), Acceptable 0,00

No pictures to display

Engine protective plate, Hole, E - Replace 109,10



Roof pillar L, Hail damage, PDR - Hail 50,00



Wing R R, Dent(s) and scratch(es), LI - Repair and paint (complete) 369,84



Roof pillar R, Hail damage, PDR - Hail 25,00



Roof, Hail damage, PDR - Hail 125,00

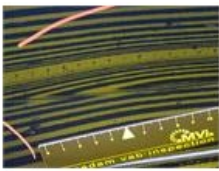


Bonnet, Chemical pollution, LI - Repair and paint (complete) 348,09



Door R R, Dent(s) and scratch(es), LI - Repair and paint (complete) 550,02





Wheel cover R R, Scratch(es), E - Replace

36,00



Reflector, Broken, E - Replace

15,00



Wheel cover F R, Scratch(es), E - Replace

36,00



Bumper R, Dent(s) and scratch(es), LI - Repair and paint (complete)

302,16

