



PEUGEOT 308: 1KDS142

| | | | |
|------------------------------------|--------------------------|--------------|----------------------------|
| Vinnumber: | VF3LB9HPAFS084671 | Versionname: | 1.6 HDI 68KW ACCESS |
| First Registrationdate: | 9/04/2015 | Fiscalpower: | |
| Expertise Mileage: | 89011 | Power Kw: | 68 |
| Bodytype: | | Body color: | Dark Blue |
| Gearbox: | MAN 5 VIT | Paint type: | Metalic |
| Transmission: | | Rims summer: | Steel |
| Fueltype: | Diesel | Oil level: | OK |
| Battery functioning: | Yes | Parking lot: | 4714 |
| Number of doors: | 5 | | |
| Number of seats: | 5 | | |
| Number head rests: | 5 | | |
| Rims summer: | Steel | | |
| Category: | Passenger Car | | |
| Oil level: | OK | | |
| Registration Certificate Car (BE): | Yes | | |

Options

| | | | |
|-------------------------|-------------------------------|----------------------|-------------------|
| Radio CD | | Luggage cover | |
| Windows electric F | | Rear parking sensors | |
| Windows electric R | | Type of Tow bar | No Tow bar |
| Cruise Control | | | |
| Radio multimedia | | | |
| Type of headlighting | Headlighting Halogen | | |
| Type of GPS | No GPS | | |
| Type of Lining | Lining fabrics | | |
| Type of climate control | Manual climate control | | |

Limited Technical Inspection

| | | | |
|---------------------|-----------|---------------------|---------------|
| Airco functioning | OK | Battery functioning | Yes |
| Tires wear profile | OK | Power steering | Yes |
| Idle position | OK | Sound engine | OK |
| Engine startingtime | OK | Clutch test | OK |
| Exhaust gass | OK | Wiper fluid level | NOT OK |
| Handbrake | OK | Transmission | OK |
| | | Lighting | OK |
| | | Wiperblades | OK |

Degree of wear

| | | | | |
|---------------|-----------------------------|-----------------------|-------|-----------------------|
| | 195/65/15/91 T Steel | | | |
| Winter tyres: | Fr.L. | Semperit: 6 mm | Fr.R. | Semperit: 6 mm |
| | Re.L. | Uniroyal: 5 mm | Re.R. | Uniroyal: 5 mm |

Assistance equipment

| | | | |
|------------|------------|------------|------------|
| Repair kit | Yes | Compressor | Yes |
|------------|------------|------------|------------|

Total cost ex VAT 878,50

Door R R, Scratch(es), LI - Repair and paint (complete) 318,35





Wing R L, Scratch(es), Acceptable 0,00

No pictures to display

Bonnet, Stone chip(s), Acceptable 0,00

No pictures to display

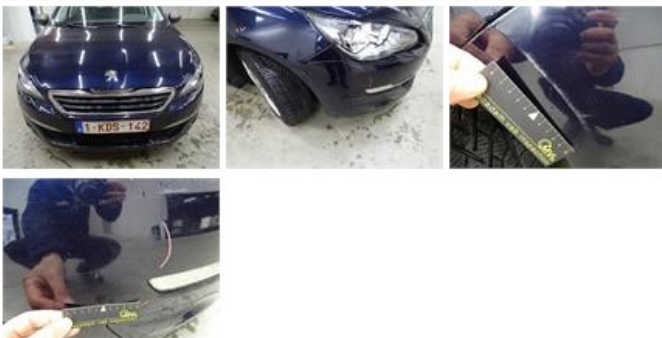
Bumper R, Scratch(es), 67 - Polish 0,00

No pictures to display

Door R L, Scratch(es), LI - Repair and paint (complete) 318,35



Bumper F, Scratch(es), LI - Repair and paint (complete) 211,80



Wheel cover F R, Scratch(es), E - Replace 30,00



Wing R R, Scratch(es), Acceptable 0,00

No pictures to display