



**CITROEN C4 Picasso: 1HEJ604**

Vinnumber:	<b>VF73D9HC8EJ640435</b>	Versionname:	<b>C4 PICASSO e-HDi Business GPS 114PK</b>
First Registrationdate:	<b>1/07/2014</b>	Fiscalpower:	
Expertise Mileage:	<b>194112</b>	Power Kw:	<b>85</b>
Bodytype:		Body color:	<b>Grey</b>
Gearbox:	<b>MAN 6 VIT</b>	Paint type:	<b>Metallic</b>
Transmission:		Rims summer:	<b>Aluminium</b>
Fueltype:	<b>Diesel</b>	Oil level:	<b>OK</b>
Battery functioning:	<b>Yes</b>	Parking lot:	<b>2129</b>
Number of doors:	<b>5</b>		
Number of seats:	<b>5</b>		
Number head rests:	<b>5</b>		
Rims summer:	<b>Aluminium</b>		
Category:	<b>Passenger Car</b>		
Oil level:	<b>OK</b>		
Registration Certificate Car (BE):	<b>Yes</b>		

**Options**

Windows electric F	Central consol F	
Windows electric R	Luggage cover	
Cruise Control	Rear parking sensors	
Steering wheel multifunctional	Type of Tow bar	<b>No Tow bar</b>
Radio multimedia		
Type of headlighting	<b>Headlighting Halogen</b>	
Type of GPS	<b>GPS big screen color</b>	
Type of Lining	<b>Lining fabrics</b>	
Type of climate control	<b>Autom climate control</b>	

**Limited Technical Inspection**

Airco functioning	<b>OK</b>	Battery functioning	<b>Yes</b>
Tires wear profile	<b>OK</b>	Power steering	<b>Yes</b>
Idle position	<b>OK</b>	Sound engine	<b>OK</b>
Engine startingtime	<b>OK</b>	Clutch test	<b>OK</b>
Exhaust gass	<b>OK</b>	Wiper fluid level	<b>OK</b>
Handbrake	<b>OK</b>	Transmission	<b>OK</b>
		Lighting	<b>OK</b>
		Wiperblades	<b>OK</b>

**Degree of wear**

	<b>205/60/16/92 H LightMetal</b>			
Summer tyres:	Fr.L.	<b>Uniroyal: 4 mm</b>	Fr.R.	<b>Uniroyal: 4 mm</b>
	Re.L.	<b>Uniroyal: 6 mm</b>	Re.R.	<b>Uniroyal: 6 mm</b>

**Assistance equipment**

Emergency spare wheel	<b>Yes</b>	Jack	<b>Yes</b>
-----------------------	------------	------	------------

Total cost ex VAT 2181,88

Wing F L, Scratch(es), LI - Repair and paint (complete) 0,00



Roof, Scratch(es), LI - Repair and paint (complete)



Foglight R, Missing, E - Replace 138,00



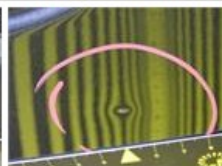
Tailgate, Scratch(es), LI - Repair and paint (complete) 301,68



Door R L, Scratch(es), Acceptable 0,00

No pictures to display

Door F L, Dent(s) and scratch(es), LI - Repair and paint (complete) 318,35



Door F R, Scratch(es), Acceptable 0,00

No pictures to display

Bonnet, Stone chip(s), Acceptable 0,00

No pictures to display

Bumper R, Scratch(es), LI - Repair and paint (complete) 211,80



Alloy rim R R, Scratch(es), Acceptable 0,00

No pictures to display

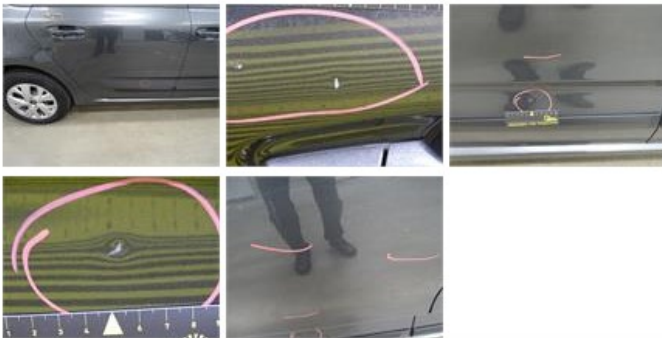
Bumper F M, Broken, E - Replace 104,00



Bumper F, Broken, Le - Replace and paint 0,00



Door R R, Dent(s) and scratch(es), LI - Repair and paint (complete) 318,35



Wing R L, Dent(s) and scratch(es), LI - Repair and paint (complete) 308,20

