



**BMW 3 TOURING: 1KKA519**

Vinnumber:	<b>WBA3L11070K177672</b>	Versionname:	<b>2.0 320D EFFICIENTDYN. (120KW) TOURING</b>
First Registrationdate:	<b>18/05/2015</b>	Fiscalpower:	
Expertise Mileage:	<b>137828</b>	Power Kw:	<b>120</b>
Bodytype:		Body color:	<b>Grey</b>
Gearbox:	<b>MAN 6 VIT</b>	Paint type:	<b>Metalic</b>
Transmission:	<b>Back</b>	Rims summer:	<b>Aluminium</b>
Fueltype:	<b>Diesel</b>	Oil level:	<b>OK</b>
Battery functioning:	<b>Yes</b>	Parking lot:	<b>4308</b>
Number of doors:	<b>5</b>		
Number of seats:	<b>5</b>		
Number head rests:	<b>5</b>		
Rims summer:	<b>Aluminium</b>		
Category:	<b>Passenger Car</b>		
Oil level:	<b>OK</b>		
Registration Certificate Car (BE):	<b>Yes</b>		

**Options**

Radio CD	Central consol F
Windows electric F	Luggage cover
Windows electric R	Front parking sensors
Cruise Control	Rear parking sensors
Steering wheel multifunctional	Type of Tow bar
Seats F heated	<b>No Tow bar</b>
Radio multimedia	
Type of headlighting	<b>Headlighting Halogen</b>
Type of GPS	<b>GPS big screen color</b>
Type of Lining	<b>Lining artificial leather</b>
Type of climate control	<b>Autom climate control</b>

**Limited Technical Inspection**

Airco functioning	<b>OK</b>	Battery functioning	<b>Yes</b>
Tires wear profile	<b>OK</b>	Power steering	<b>Yes</b>
Idle position	<b>OK</b>	Sound engine	<b>OK</b>
Engine startingtime	<b>OK</b>	Clutch test	<b>OK</b>
Exhaust gass	<b>OK</b>	Wiper fluid level	<b>OK</b>
Handbrake	<b>OK</b>	Transmission	<b>OK</b>
		Lighting	<b>OK</b>
		Wiperblades	<b>OK</b>

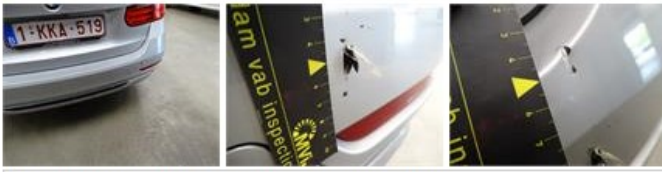
**Degree of wear**

<b>205/60/16/92 H LightMetal</b>				
Winter tyres:	Fr.L.	<b>Continental: 4 mm</b>	Fr.R.	<b>Continental: 4 mm</b>
	Re.L.	<b>Continental: 4 mm</b>	Re.R.	<b>Continental: 4 mm</b>

**Assistance equipment**

Number of charging cables (normal)	<b>0</b>
Number of charging cables (rapid charge)	<b>0</b>

<b>Total cost ex VAT</b>	<b>1273,15</b>
<b>Bumper R, Hole, Le - Replace and paint</b>	<b>651,00</b>



Door R R, Scratch(es), LI - Repair and paint (complete)

318,35



Bumper spoiler F, Broken, E - Replace

42,00



Rear window, Scratch(es), Acceptable

0,00

No pictures to display

Bumper F, Dent(s), LI - Repair and paint (complete)

211,80



Bumper moulding F L, Broken, E - Replace

50,00

