



TOYOTA HILUX: 1TVS145

| | | | |
|------------------------------------|---------------------------------|--------------|--|
| Vinnumber: | AHTB83CD501741292 | Versionname: | 2.4 D-4D Double Cab Aut. Lounge |
| First Registrationdate: | 27/02/2018 | Fiscalpower: | |
| Expertise Mileage: | 12206 | Power Kw: | 110 |
| Bodytype: | Pick-Up | Body color: | Grey |
| Gearbox: | Automatic | Paint type: | Metalic |
| Transmission: | 4 Weel | Rims summer: | Aluminium |
| Fueltype: | Diesel | Oil level: | OK |
| Battery functioning: | Yes | Parking lot: | 3622 |
| Number of doors: | 5 | | |
| Number of seats: | 5 | | |
| Number head rests: | 5 | | |
| Rims summer: | Aluminium | | |
| Category: | Light Commercial Vehicle | | |
| Oil level: | OK | | |
| Registration Certificate Car (BE): | Yes | | |

Options

| | | | |
|--------------------------------|------------------------------|--------------------|----------------------|
| Radio CD | | Seats electric F L | |
| GPS storage | HD | Central consol F | |
| GPS storage | | Type of Tow bar | Tow bar fixed |
| Windows electric F | | | |
| Windows electric R | | | |
| Cruise Control | | | |
| Steering wheel multifunctional | | | |
| Seats F heated | | | |
| Radio multimedia | | | |
| Type of headlighting | Headlighting Xenon | | |
| Type of GPS | GPS big screen color | | |
| Type of Lining | Lining leather | | |
| Type of climate control | Autom climate control | | |

Limited Technical Inspection

| | | | |
|---------------------|-----------|---------------------|------------|
| Airco functioning | OK | Battery functioning | Yes |
| Tires wear profile | OK | Power steering | Yes |
| Idle position | OK | Sound engine | OK |
| Engine startingtime | OK | Clutch test | OK |
| Exhaust gass | OK | Wiper fluid level | OK |
| Handbrake | OK | Transmission | OK |
| | | Lighting | OK |
| | | Wiperblades | OK |

Degree of wear

| | | | | |
|-----------------------------------|-------|--------------------------|-------|--------------------------|
| 265/60/18/110 H LightMetal | | | | |
| Winter tyres: | Fr.L. | Bridgestone: 7 mm | Fr.R. | Bridgestone: 7 mm |
| | Re.L. | Bridgestone: 7 mm | Re.R. | Bridgestone: 7 mm |

Assistance equipment

| | |
|--|------------|
| Spare wheel | Yes |
| Number of charging cables (normal) | 0 |
| Number of charging cables (rapid charge) | 0 |

| | |
|---|---------|
| Total cost ex VAT | 2158,56 |
| Wing F R, Dent(s) and scratch(es), Le - Replace and paint | 427,51 |



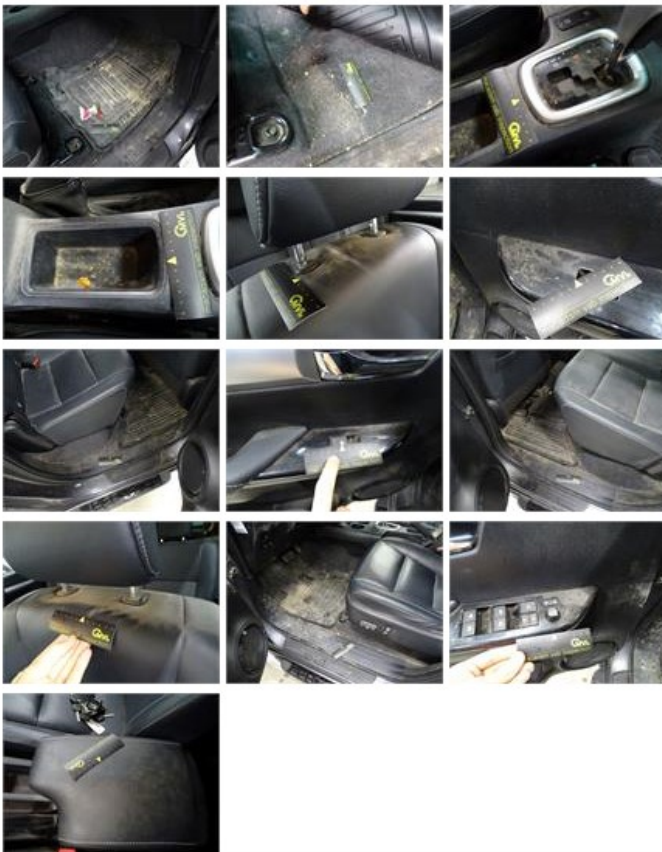
Bumper corner R R, Deformed / Strained, Smart repair

110,64



Interior, Dirty, Cleaning

100,00



Door R R, Scratch(es), LI - Repair and paint (complete)

238,76





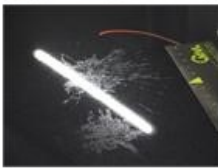
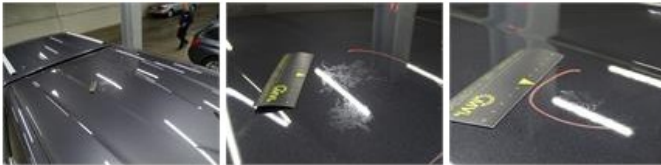
Door F L, Scratch(es), Acceptable 0,00

No pictures to display

Bumper corner R R, Broken, Smart repair 110,64



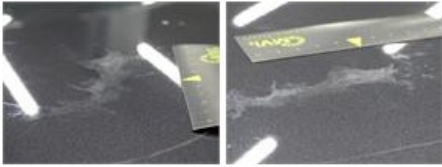
Roof, Chemical polution, LI - Repair and paint (complete) 361,13



Wing R R, Dent(s) and scratch(es), LI - Repair and paint (complete) 231,15



Bonnet, Chemical polution, LI - Repair and paint (complete) 217,56



Door F R, Dent(s), Acceptable 0,00

No pictures to display

Bumper F, Scratch(es), LI - Repair and paint (complete) 158,85

Bumper F, Scratch(es), E - Repair and paint (complete)

100,00



Rearview mirror R complete, Broken, E - Replace

138,00



Tailgate, Scratch(es), Acceptable

0,00

No pictures to display

Door frame R R, Scratch(es), Acceptable

0,00

No pictures to display

Armrest F Mid, Tear, Smart repair

64,32

