



FORD MONDEO: 1KGU541

Vinnumber:	WF0EXXWPCEFD40728	Versionname:	2.0 TDCI 110KW S/S ECONETIC BUSINESS ED+
First Registrationdate:	30/04/2015	Fiscalpower:	
Expertise Mileage:	68978	Power Kw:	110
Bodytype:	Berline	Body color:	Red
Gearbox:	MAN 6 VIT	Paint type:	Metalic
Transmission:	Front	Rims summer:	Aluminium
Fueltype:	Diesel	Oil level:	OK
Battery functioning:	Yes	Parking lot:	3302
Number of doors:	4		
Number of seats:	5		
Number head rests:	5		
Rims summer:	Aluminium		
Category:	Passenger Car		
Oil level:	OK		
Registration Certificate Car (BE):	Yes		

Options

Radio CD		Seats electric F L	
GPS storage	SD	Seats electric F R	
GPS storage		Panoramic roof	
Windows electric F		Central consol F	
Windows electric R		Luggage cover	
Cruise Control		Front parking sensors	
Steering wheel multifunctional		Rear parking sensors	
Seats F heated		Type of Tow bar	No Tow bar
Radio multimedia			
Type of headlighting	Headlighting Halogen		
Type of GPS	GPS big screen color		
Type of Lining	Lining leather		
Type of climate control	Autom climate control		

Limited Technical Inspection

Airco functioning	OK	Battery functioning	Yes
Tires wear profile	OK	Power steering	Yes
Idle position	OK	Sound engine	OK
Engine startingtime	OK	Clutch test	OK
Exhaust gass	OK	Wiper fluid level	OK
Handbrake	OK	Transmission	OK
		Lighting	OK
		Wiperblades	OK

Degree of wear

215/60/16/99 W LightMetal				
Summer tyres:	Fr.L.	Vredestein: 6 mm	Fr.R.	Vredestein: 6 mm
	Re.L.	Vredestein: 7 mm	Re.R.	Vredestein: 7 mm

Assistance equipment

Emergency spare wheel	Yes	Jack	Yes
Number of charging cables (normal)	0		
Number of charging cables (rapid charge)	0		

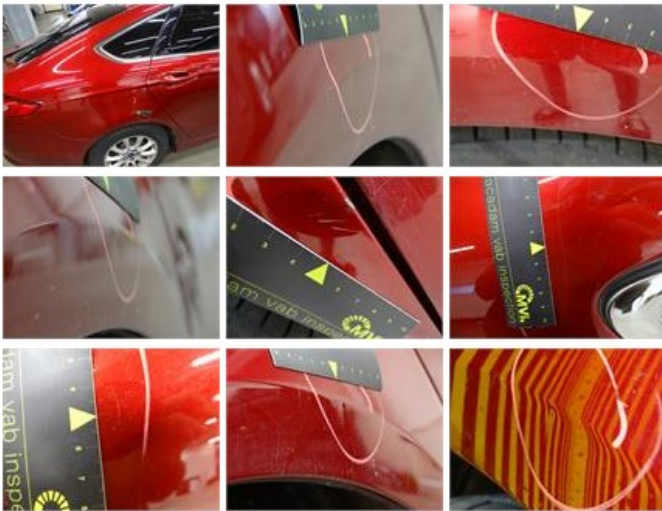
Total cost ex VAT	2628,46
Seat cover F R, Tear, E - Replace	360,00



Bonnet, Dent(s) and scratch(es), LI - Repair and paint (complete) 290,08



Wing R R, Dent(s) and scratch(es), LI - Repair and paint (complete) 308,20



Tailgate, Scratch(es), LI - Repair and paint (complete) 301,68



Door F L, Scratch(es), Acceptable 0,00

No pictures to display

Wing R L, Dent(s) and scratch(es), LI - Repair and paint (complete) 308,20





Door F R, Dent(s) and scratch(es), LI - Repair and paint (complete) 318,35



Door R L, Scratch(es), Acceptable 0,00

No pictures to display

Bumper R, Scratch(es), LI - Repair and paint (complete) 211,80



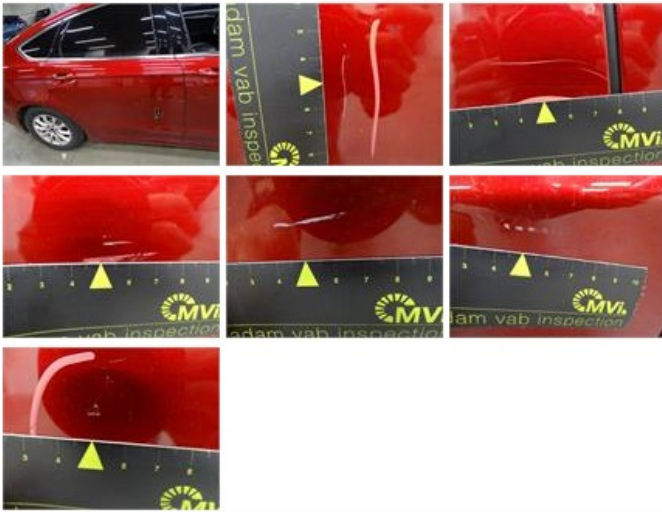
Bumper F, Dent(s) and scratch(es), LI - Repair and paint (complete) 211,80





Door R R, Scratch(es), LI - Repair and paint (complete)

318,35



Wing F R, Scratch(es), Acceptable

0,00

No pictures to display