


**FORD S-MAX: 1NBT831**

Vinnumber:	<b>WF0JXXWPCJFP05657</b>	Versionname:	<b>2.0 TDCI 88KW S/S BUSINESS ED</b>
First Registrationdate:	<b>14/01/2016</b>	Fiscalpower:	
Expertise Mileage:	<b>67962</b>	Power Kw:	<b>88</b>
Bodytype:	<b>MPV</b>	Body color:	<b>Silver</b>
Gearbox:	<b>MAN 6 VIT</b>	Paint type:	<b>Metallic</b>
Transmission:		Rims summer:	<b>Steel</b>
Fueltype:	<b>Diesel</b>	Oil level:	<b>OK</b>
Battery functioning:	<b>Yes</b>	Parking lot:	<b>2507</b>
Number of doors:	<b>5</b>		
Number of seats:	<b>7</b>		
Number head rests:	<b>7</b>		
Rims summer:	<b>Steel</b>		
Category:	<b>Passenger Car</b>		
Oil level:	<b>OK</b>		
Registration Certificate Car (BE):	<b>Yes</b>		

**Options**

Radio CD	Central consol F
Windows electric F	Front parking sensors
Windows electric R	Rear parking sensors
Cruise Control	Type of Tow bar
Steering wheel multifunctional	<b>Tow bar removable</b>
Radio multimedia	
Type of headlighting	<b>Headlighting Halogen</b>
Type of GPS	<b>GPS big screen color</b>
Type of Lining	<b>Lining fabrics</b>
Type of climate control	<b>Autom climate control</b>

**Limited Technical Inspection**

Airco functioning	<b>OK</b>	Battery functioning	<b>Yes</b>
Tires wear profile	<b>OK</b>	Power steering	<b>Yes</b>
Idle position	<b>OK</b>	Sound engine	<b>OK</b>
Engine startingtime	<b>OK</b>	Clutch test	<b>OK</b>
Exhaust gass	<b>OK</b>	Wiper fluid level	<b>OK</b>
Handbrake	<b>OK</b>	Transmission	<b>OK</b>
		Lighting	<b>OK</b>
		Wiperblades	<b>OK</b>

**Degree of wear**

235/55/17/103 V Steel				
Winter tyres:	Fr.L.	<b>Vredestein: 8 mm</b>	Fr.R.	<b>Vredestein: 8 mm</b>
	Re.L.	<b>Pirelli: 4 mm</b>	Re.R.	<b>Pirelli: 4 mm</b>

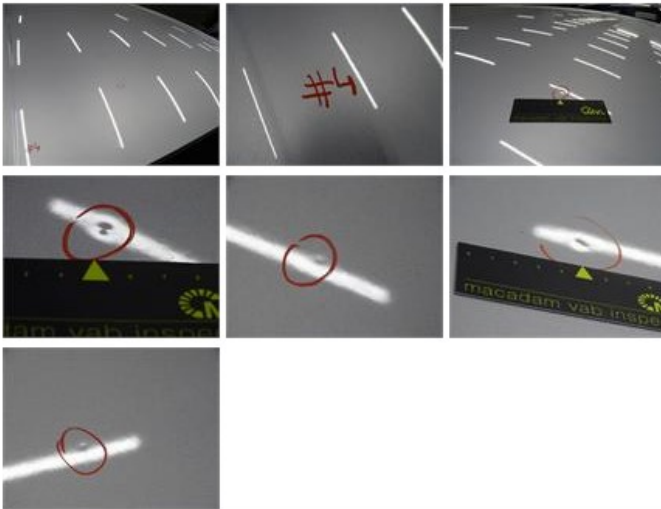
**Assistance equipment**

Total cost ex VAT	657,84
Bumper R, Scratch(es), 67 - Polish	0,00
<i>No pictures to display</i>	
Wheel cover F L, Scratch(es), Acceptable	0,00
<i>No pictures to display</i>	
Bumper F, Stone chip(s), Acceptable	0,00
<i>No pictures to display</i>	
Door R R, Scratch(es), 67 - Polish	0,00
<i>No pictures to display</i>	

Bonnet, Dent(s), Acceptable 0,00

No pictures to display

Roof, Hail damage, PDR - Hail 0,00



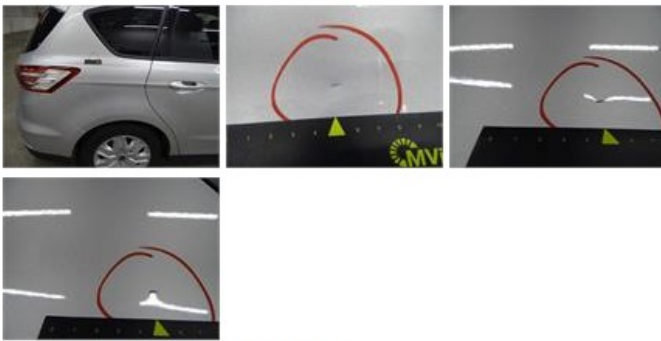
Door F L, Scratch(es), 67 - Polish 0,00

No pictures to display

Door R L, Scratch(es), 67 - Polish 0,00

No pictures to display

Wing R R, Dent(s) and scratch(es), LI - Repair and paint (complete) 369,84



Wheel cover F R, Scratch(es), Acceptable 0,00

No pictures to display

Luggage space cover, Missing, E - Replace 288,00



Wing R L, Scratch(es), 67 - Polish 0,00

No pictures to display