



**BMW 2 ACTIVE TOURER: 1KAU051**

Vinnumber:	<b>WBA2B31090V380877</b>	Versionname:	<b>1.5 216D ACTIVE TOURER</b>
First Registrationdate:	<b>20/03/2015</b>	Fiscalpower:	
Expertise Mileage:	<b>148452</b>	Power Kw:	<b>85</b>
Bodytype:		Body color:	<b>Grey</b>
Gearbox:	<b>MAN 6 VIT</b>	Paint type:	<b>Metalic</b>
Transmission:	<b>Front</b>	Rims summer:	<b>Aluminium</b>
Fueltype:	<b>Diesel</b>	Oil level:	<b>OK</b>
Battery functioning:	<b>Yes</b>	Parking lot:	<b>1512</b>
Number of doors:	<b>5</b>		
Number of seats:	<b>5</b>		
Number head rests:	<b>5</b>		
Rims summer:	<b>Aluminium</b>		
Category:	<b>Passenger Car</b>		
Oil level:	<b>OK</b>		
Registration Certificate Car (BE):	<b>Yes</b>		

**Options**

GPS storage	<b>HD</b>	Central consol F	
GPS storage		Luggage cover	
Windows electric F		Type of Tow bar	<b>No Tow bar</b>
Windows electric R			
Cruise Control			
Steering wheel multifunctional			
Radio multimedia			
Type of headlighting	<b>Headlighting Halogen</b>		
Type of GPS	<b>GPS big screen color</b>		
Type of Lining	<b>Lining fabrics</b>		
Type of climate control	<b>Manual climate control</b>		

**Limited Technical Inspection**

Airco functioning	<b>OK</b>	Battery functioning	<b>Yes</b>
Tires wear profile	<b>OK</b>	Power steering	<b>Yes</b>
Idle position	<b>OK</b>	Sound engine	<b>OK</b>
Engine startingtime	<b>OK</b>	Clutch test	<b>OK</b>
Exhaust gass	<b>OK</b>	Wiper fluid level	<b>OK</b>
Handbrake	<b>OK</b>	Transmission	<b>OK</b>
		Lighting	<b>OK</b>
		Wiperblades	<b>OK</b>

**Degree of wear**

<b>205/60/16/92 H LightMetal</b>				
Winter tyres:	Fr.L.	<b>Uniroyal: 5 mm</b>	Fr.R.	<b>Uniroyal: 5 mm</b>
	Re.L.	<b>Uniroyal: 5 mm</b>	Re.R.	<b>Uniroyal: 5 mm</b>

**Assistance equipment**

Repair kit	<b>Yes</b>	Compressor	<b>Yes</b>
Number of charging cables (normal)	<b>0</b>		
Number of charging cables (rapid charge)	<b>0</b>		

Total cost ex VAT	<b>888,33</b>
Bumper F, Scratch(es), LI - Repair and paint (complete)	<b>211,80</b>



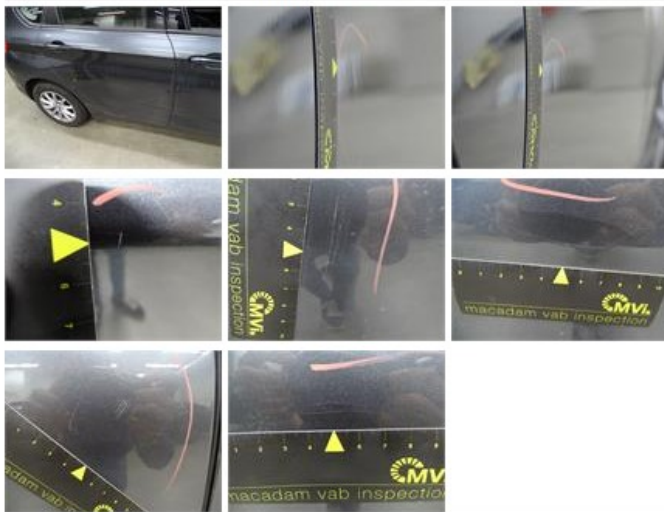
Door F R, Scratch(es), Acceptable 0,00

No pictures to display

Foglight R, Crack, E - Replace 138,00



Door R R, Dent(s) and scratch(es), LI - Repair and paint (complete) 318,35



Tailgate, Scratch(es), Acceptable 0,00

No pictures to display

Door R L, Scratch(es), Acceptable 0,00

No pictures to display

Wing R R, Scratch(es), Acceptable 0,00

No pictures to display

Wing F L, Dent(s) and scratch(es), LI - Repair and paint (complete) 220,18



Windscreen, Stone chip(s), Acceptable 0,00

No pictures to display