



RENAULT KANGOO EXPRESS: 1KFP228

Vinnumber:	VF1FW18H552901448	Versionname:	1.5DCI 90 MAXI GRAND CONFORT
First Registrationdate:	22/04/2015	Fiscalpower:	
Expertise Mileage:	145145	Power Kw:	66
Bodytype:	Transporter	Body color:	White
Gearbox:	MAN 5 VIT	Paint type:	Opaque
Transmission:	Front	Rims summer:	Steel
Fueltype:	Diesel	Oil level:	OK
Battery functioning:	Yes	Parking lot:	3514
Number of doors:	5		
Number of seats:	2		
Number head rests:	2		
Rims summer:	Steel		
Category:	Light Commercial Vehicle		
Oil level:	OK		
Registration Certificate Car (BE):	Yes		

Options

Radio CD	Type of Tow bar	Tow bar fixed
Windows electric F		
Radio multimedia		
Type of headlighting	Headlighting Halogen	
Type of GPS	GPS big screen color	
Type of Lining	Lining fabrics	
Type of climate control	Manual climate control	

Limited Technical Inspection

Airco functioning	OK	Battery functioning	Yes
Tires wear profile	OK	Power steering	Yes
Idle position	OK	Sound engine	OK
Engine startingtime	OK	Clutch test	OK
Exhaust gass	OK	Wiper fluid level	OK
Handbrake	OK	Transmission	OK
		Lighting	OK
		Wiperblades	OK

Degree of wear

195/65/15/95 T Steel				
Summer tyres:	Fr.L.	Bridgestone: 5 mm	Fr.R.	Bridgestone: 5 mm
	Re.L.	Bridgestone: 6 mm	Re.R.	Bridgestone: 6 mm

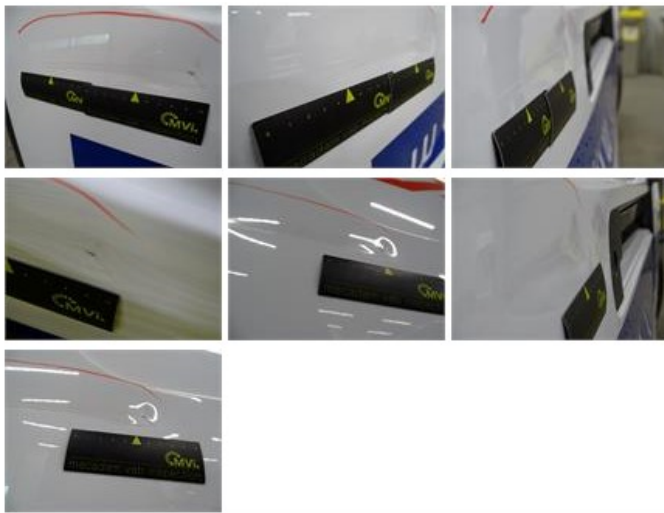
Assistance equipment

Spare wheel	Yes	Jack	Yes
Number of charging cables (normal)	0		
Number of charging cables (rapid charge)	0		

Total cost ex VAT 1175,99

Sidewall RR (LCV), Dent(s) and scratch(es), It - Spot repair 115,56





Door panel F R, Scratch(es), Smart repair 110,64



Bumper R, Scratch(es), Acceptable 0,00

No pictures to display

Wing F R, Scratch(es), Acceptable 0,00

No pictures to display

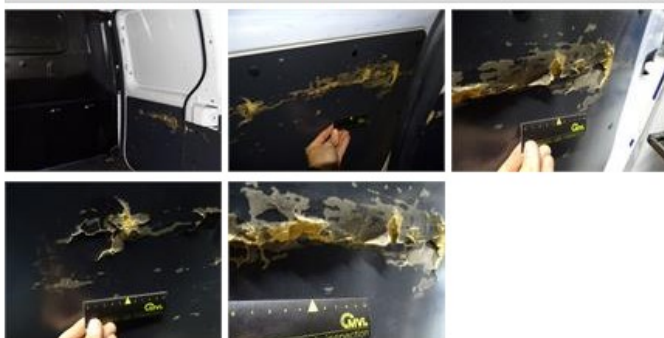
Rearview mirror housing R, Scratch(es), Acceptable 0,00

No pictures to display

Door panel F L, Scratch(es), Smart repair 110,64



Sliding door panel R, Damaged, E - Replace 74,00



Bodywork, Not original part, Acceptable 0,00

No pictures to display

Trunk door R R, Scratch(es), Acceptable 0,00

No pictures to display

Bumper F, Dent(s) and scratch(es), Smart repair 110,64





Sidewall panel RR, Broken, E - Replace

74,00



SD card, Missing, E - Replace

206,25



Door R R, Dent(s) and scratch(es), LI - Repair and paint (complete)

238,76



Door F L, Scratch(es), Acceptable

0,00

No pictures to display

Rearlight R, Broken, E - Replace

91,50



Reflector, Broken, E - Replace

44,00

