



SKODA SUPERB COMBI: 1KKV245

| | | | |
|------------------------------------|--------------------------|--------------|--|
| Vinnumber: | TMBJJ73T7F9045599 | Versionname: | 1.6 CRTDI 77KW GREENLINE AMBITION |
| First Registrationdate: | 22/05/2015 | Fiscalpower: | |
| Expertise Mileage: | 110258 | Power Kw: | 77 |
| Bodytype: | Break | Body color: | Black |
| Gearbox: | MAN 6 VIT | Paint type: | Metalic |
| Transmission: | Front | Rims summer: | Aluminium |
| Fueltype: | Diesel | Oil level: | OK |
| Battery functioning: | Yes | Parking lot: | 3225 |
| Number of doors: | 5 | | |
| Number of seats: | 5 | | |
| Number head rests: | 5 | | |
| Rims summer: | Aluminium | | |
| Category: | Passenger Car | | |
| Oil level: | OK | | |
| Registration Certificate Car (BE): | Yes | | |

Options

| | | | |
|--------------------------------|------------------------------|-----------------------|--------------------------|
| Radio CD | | Seats electric F L | |
| GPS storage | | Sun Roof electric | |
| GPS storage | HD | Panoramic roof | |
| Windows electric F | | Central consol F | |
| Windows electric R | | Luggage cover | |
| Cruise Control | | Front parking sensors | |
| Steering wheel multifunctional | | Rear parking sensors | |
| Radio multimedia | | Type of Tow bar | Tow bar removable |
| Type of headlighting | Headlighting Halogen | | |
| Type of GPS | GPS big screen color | | |
| Type of Lining | Lining fabrics | | |
| Type of climate control | Autom climate control | | |

Limited Technical Inspection

| | | | |
|---------------------|-----------|---------------------|------------|
| Airco functioning | OK | Battery functioning | Yes |
| Tires wear profile | OK | Power steering | Yes |
| Idle position | OK | Sound engine | OK |
| Engine startingtime | OK | Clutch test | OK |
| Exhaust gass | OK | Wiper fluid level | OK |
| Handbrake | OK | Transmission | OK |
| | | Lighting | OK |
| | | Wiperblades | OK |

Degree of wear

| | | | | |
|----------------------------------|-------|-----------------------|-------|-----------------------|
| 205/55/16/91 H LightMetal | | | | |
| Summer tyres: | Fr.L. | Michelin: 5 mm | Fr.R. | Michelin: 5 mm |
| | Re.L. | Michelin: 6 mm | Re.R. | Michelin: 6 mm |

Assistance equipment

| | | | |
|--|------------|------------|------------|
| Repair kit | Yes | Compressor | Yes |
| Number of charging cables (normal) | 0 | | |
| Number of charging cables (rapid charge) | 0 | | |

| | |
|--|----------------|
| Total cost ex VAT | 6678,85 |
| Bumper grille F R, Missing, E - Replace | 34,08 |



Alloy rim R L, Scratch(es), Acceptable 0,00

No pictures to display

Wing R L, Scratch(es), Acceptable 0,00

No pictures to display

Door R L, Scratch(es), Acceptable 0,00

No pictures to display

Headlight R, Crack, E - Replace 456,00



Roof, Dent(s), PDR - Paintless dent repair 63,00



Rear window, Scratch(es), E - Replace 420,00



Bonnet, Scratch(es), 67 - Polish 0,00

No pictures to display

Tailgate, Scratch(es), Acceptable 0,00

No pictures to display

Rearview mirror housing L, Scratch(es), LI - Repair and paint (complete) 115,56



Alloy rim F R, Scratch(es), LI - Repair and paint (complete) 95,00





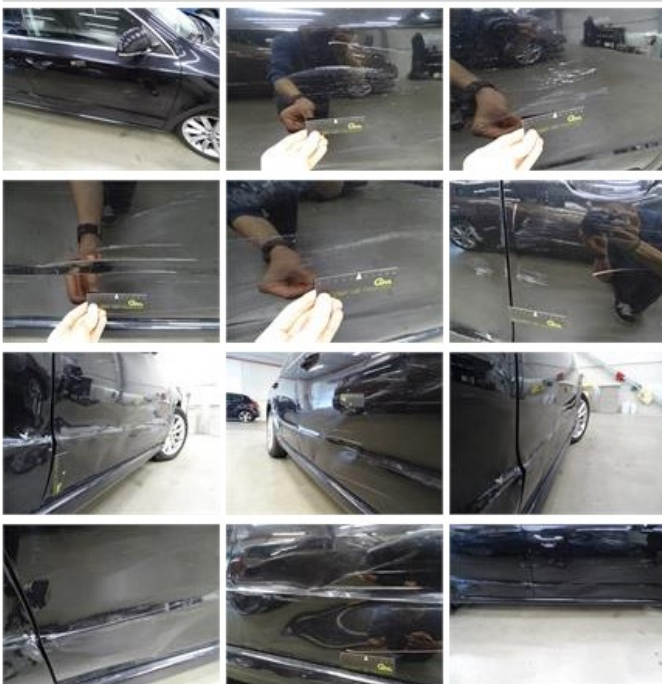
Door R R, Dent(s) and scratch(es), Le - Replace and paint

1107,49



Door F R, Dent(s) and scratch(es), Le - Replace and paint

1270,21



Sill outer R, Scratch(es), LI - Repair and paint (complete)

372,60



Alloy rim R R, Scratch(es), Acceptable

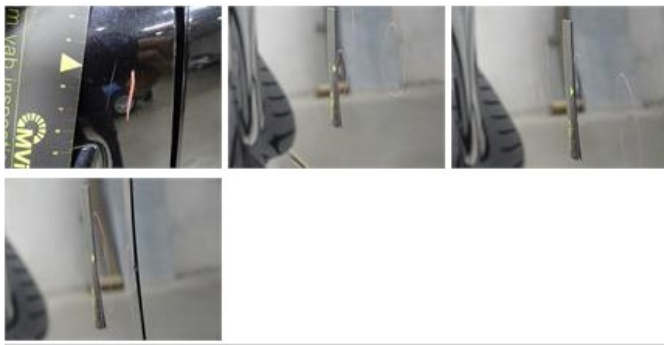
0,00

No pictures to display

Door F L, Dent(s) and scratch(es), LI - Repair and paint (complete)

382,02





Wheel arch cover F R, Crack, E - Replace

65,55



Bumper R, Dent(s) and scratch(es), LI - Repair and paint (complete)

254,16



Wing F R, Deformed / Strained, LI - Repair and paint (complete)

264,21



Bumper F, Scratch(es), LI - Repair and paint (complete)

254,81



Wing R R, Dent(s) and scratch(es), Le - Replace and paint

1429,81



Alloy rim F L, Scratch(es), LI - Repair and paint (complete)

95,00

