


**LAND ROVER Range: 1JPC089**

Vinnumber:	<b>SALWA2KF1FA604088</b>	Versionname:	<b>RANGE ROVER SP.TdV6 SE 211PK Aut.</b>
First Registrationdate:	<b>29/01/2015</b>	Fiscalpower:	
Expertise Mileage:	<b>96438</b>	Power Kw:	<b>155</b>
Bodytype:	<b>Off-road</b>	Body color:	<b>Dark Blue</b>
Gearbox:	<b>Automatic</b>	Paint type:	<b>Metalic</b>
Transmission:		Rims summer:	<b>Aluminium</b>
Fueltype:	<b>Diesel</b>	Oil level:	<b>OK</b>
Battery functioning:	<b>Yes</b>	Parking lot:	<b>2306</b>
Number of doors:	<b>5</b>		
Number of seats:	<b>5</b>		
Number head rests:	<b>5</b>		
Rims summer:	<b>Aluminium</b>		
Category:	<b>Passenger Car</b>		
Oil level:	<b>OK</b>		
Registration Certificate Car (BE):	<b>Yes</b>		

**Options**

Radio CD		Seats electric F L	
Windows electric F		Seats electric F R	
Windows electric R		Central consol F	
Cruise Control		Luggage cover	
Steering wheel multifunctional		Rear parking sensors	
Radio multimedia		Type of Tow bar	<b>No Tow bar</b>
Type of headlighting	<b>Headlighting Xenon</b>		
Type of GPS	<b>GPS big screen color</b>		
Type of Lining	<b>Lining leather</b>		
Type of climate control	<b>Autom climate control</b>		
Level control			

**Limited Technical Inspection**

Airco functioning	<b>OK</b>	Battery functioning	<b>Yes</b>
Tires wear profile	<b>OK</b>	Power steering	<b>Yes</b>
Idle position	<b>OK</b>	Sound engine	<b>OK</b>
Engine startingtime	<b>OK</b>	Clutch test	<b>OK</b>
Exhaust gass	<b>OK</b>	Wiper fluid level	<b>OK</b>
Handbrake	<b>OK</b>	Transmission	<b>OK</b>
		Lighting	<b>OK</b>
		Wiperblades	<b>OK</b>

**Degree of wear**

<b>235/65/19/109 V LightMetal</b>				
Summer tyres:	Fr.L.	<b>Pirelli: 4 mm</b>	Fr.R.	<b>Pirelli: 4 mm</b>
	Re.L.	<b>Pirelli: 4 mm</b>	Re.R.	<b>Pirelli: 4 mm</b>

**Assistance equipment**

Spare wheel	<b>Yes</b>	Jack	<b>Yes</b>
Total cost ex VAT			<b>1015,95</b>
Bonnet, Stone chip(s), Acceptable			<b>0,00</b>
<i>No pictures to display</i>			
Wing R L, Scratch(es), Acceptable			<b>0,00</b>
<i>No pictures to display</i>			
Wing F R, Scratch(es), LI - Repair and paint (complete)			<b>264,21</b>



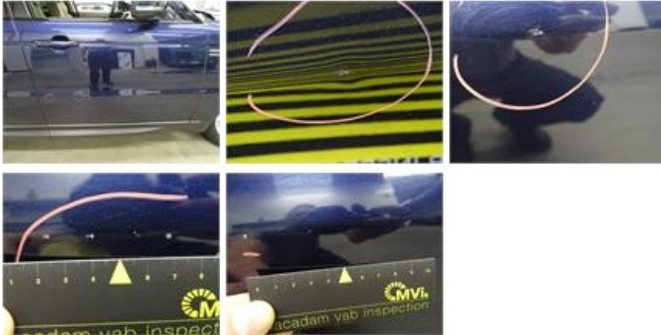
Door F L, Scratch(es), Acceptable 0,00

No pictures to display

Tailgate, Scratch(es), Acceptable 0,00

No pictures to display

Door F R, Dent(s) and scratch(es), LI - Repair and paint (complete) 382,02



Rearview mirror housing L, Scratch(es), LI - Repair and paint (complete) 115,56



Bumper F, Scratch(es), LI - Repair and paint (complete) 254,16



Alloy rim R R, Scratch(es), Acceptable 0,00

No pictures to display

Alloy rim F R, Scratch(es), Acceptable 0,00

No pictures to display