



RENAULT Megane: 1GMK944

| | | | |
|------------------------------------|--------------------------|--------------|--------------------------------|
| Vinnumber: | VF1KZ0R0250419372 | Versionname: | MEGANE GT Business 95PK |
| First Registrationdate: | 11/03/2014 | Fiscalpower: | |
| Expertise Mileage: | 108852 | Power Kw: | 70 |
| Bodytype: | Break | Body color: | Brown |
| Gearbox: | MAN 6 VIT | Paint type: | Metalic |
| Transmission: | Front | Rims summer: | Steel |
| Fueltype: | Diesel | Oil level: | OK |
| Battery functioning: | Yes | Parking lot: | 1110 |
| Number of doors: | 5 | | |
| Number of seats: | 5 | | |
| Number head rests: | 5 | | |
| Rims summer: | Steel | | |
| Category: | Passenger Car | | |
| Oil level: | OK | | |
| Registration Certificate Car (BE): | Yes | | |

Options

| | | | |
|--------------------------------|------------------------------|----------------------|--------------------------|
| Radio CD | | Central consol F | |
| GPS storage | SD | Luggage cover | |
| GPS storage | | Rear parking sensors | |
| Windows electric R | | Type of Tow bar | Tow bar removable |
| Cruise Control | | | |
| Steering wheel multifunctional | | | |
| Radio multimedia | | | |
| Type of headlighting | Headlighting Halogen | | |
| Type of GPS | GPS big screen color | | |
| Type of Lining | Lining fabrics | | |
| Type of climate control | Autom climate control | | |

Limited Technical Inspection

| | | | |
|---------------------|-----------|---------------------|------------|
| Airco functioning | OK | Battery functioning | Yes |
| Tires wear profile | OK | Power steering | Yes |
| Idle position | OK | Sound engine | OK |
| Engine startingtime | OK | Clutch test | OK |
| Exhaust gass | OK | Wiper fluid level | OK |
| Handbrake | OK | Transmission | OK |
| | | Lighting | OK |
| | | Wiperblades | OK |

Degree of wear

| | | | | |
|-----------------------------|-------|-----------------------|-------|-----------------------|
| 205/55/16/91 T Steel | | | | |
| Winter tyres: | Fr.L. | Kleber: 7 mm | Fr.R. | Kleber: 7 mm |
| | Re.L. | Michelin: 5 mm | Re.R. | Michelin: 5 mm |

Assistance equipment

| | | | |
|--|------------|------|------------|
| Spare wheel | Yes | Jack | Yes |
| Number of charging cables (normal) | 0 | | |
| Number of charging cables (rapid charge) | 0 | | |

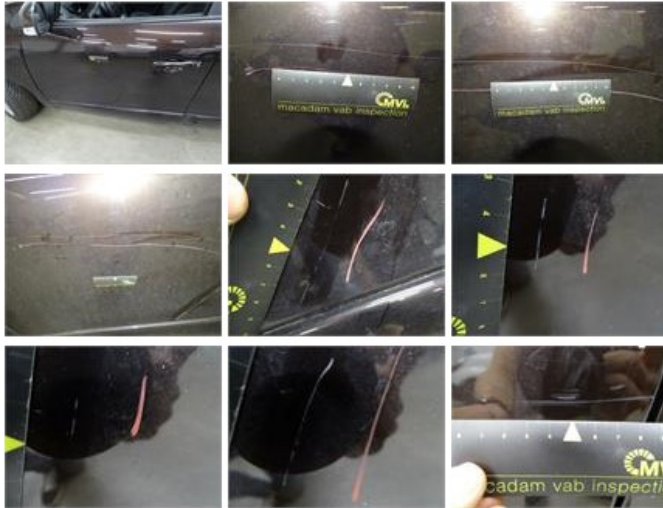
| | |
|--|----------------|
| Total cost ex VAT | 2233,71 |
| Bumper F M, Scratch(es), Smart repair | 0,00 |



Wing F R, Scratch(es), Acceptable 0,00

No pictures to display

Door F L, Scratch(es), LI - Repair and paint (complete) 318,35



Bumper F, Dent(s) and scratch(es), LI - Repair and paint (complete) 211,80



Bumper R, Scratch(es), LI - Repair and paint (complete) 211,80



Door F R, Scratch(es), Acceptable 0,00

No pictures to display

Tailgate, Scratch(es), LI - Repair and paint (complete) 301,68



Windscreen, Stone chip(s), Acceptable

0,00



Ceiling, Stain, Cleaning

25,00



Roof pillar R, Scratch(es), Acceptable

0,00

No pictures to display

Bonnet, Scratch(es), Acceptable

0,00

No pictures to display

Door R L, Scratch(es), LI - Repair and paint (complete)

318,35



Wing F L, Scratch(es), LI - Repair and paint (complete)

220,18



Wing R L, Scratch(es), LI - Repair and paint (complete)

308,20



Door R R, Dent(s) and scratch(es), LI - Repair and paint (complete)

318,35



Wing R R, Scratch(es), Acceptable

0,00

No pictures to display