



PEUGEOT Partner: 1GVV701

Vinnumber:	VF37J9HP0EJ644772	Versionname:	PARTNER TEEPEE OUTDOOR e-HDi 92PK
First Registrationdate:	14/05/2014	Fiscalpower:	
Expertise Mileage:	90896	Power Kw:	68
Bodytype:		Body color:	Blue
Gearbox:	MAN 5 VIT	Paint type:	Metallic
Transmission:	Front	Rims summer:	Steel
Fueltype:	Diesel	Oil level:	OK
Battery functioning:	Yes	Parking lot:	2708
Number of doors:	5		
Number of seats:	5		
Number head rests:	5		
Rims summer:	Steel		
Category:	Light Commercial Vehicle		
Oil level:	OK		
Registration Certificate Car (BE):	Yes		

Options

Radio CD		Panoramic roof	
Windows electric F		Luggage cover	
Cruise Control		Rear parking sensors	
Radio multimedia		Type of Tow bar	No Tow bar
Type of headlighting	Headlighting Halogen		
Type of GPS	GPS big screen color		
Type of Lining	Lining fabrics		
Type of climate control	Autom climate control		

Limited Technical Inspection

Airco functioning	OK	Battery functioning	Yes
Tires wear profile	OK	Power steering	Yes
Idle position	OK	Sound engine	OK
Engine startingtime	OK	Clutch test	OK
Exhaust gass	OK	Wiper fluid level	OK
Handbrake	OK	Transmission	OK
		Lighting	OK
		Wiperblades	OK

Degree of wear

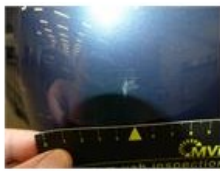
	205/65/15/94 T Steel			
Summer tyres:	Fr.L.	Michelin: 4 mm	Fr.R.	Michelin: 4 mm
	Re.L.	Michelin: 4 mm	Re.R.	Michelin: 4 mm

Assistance equipment

Emergency spare wheel	Yes	Jack	Yes
Number of charging cables (normal)	0		
Number of charging cables (rapid charge)	0		

Total cost ex VAT	398,35
Rearview mirror housing R, Scratch(es), E - Replace	74,00





Door trim R R, Scratch(es), Acceptable 0,00

No pictures to display

Sliding door L, Scratch(es), Acceptable 0,00

No pictures to display

Wing R L, Scratch(es), Acceptable 0,00

No pictures to display

Bumper R, Scratch(es), Acceptable 0,00

No pictures to display

Bumper F, Scratch(es), LI - Repair and paint (complete) 158,85



Door trim F R, Scratch(es), E - Replace 91,50



Rearview mirror housing L, Scratch(es), E - Replace 74,00

