



**VOLVO XC60: JP6756**

Vinnumber:	<b>VV1DZARC1G2887809</b>	Versionname:	<b>2.0 D3 2WD VOLVO OCEAN RACE</b>
First Registrationdate:	<b>22/01/2016</b>	Fiscalpower:	
Expertise Mileage:	<b>172376</b>	Power Kw:	<b>110</b>
Bodytype:	<b>SUV</b>	Body color:	<b>Black</b>
Gearbox:	<b>MAN 6 VIT</b>	Paint type:	<b>Metalic</b>
Transmission:		Rims summer:	<b>Aluminium</b>
Fueltype:	<b>Diesel</b>	Oil level:	<b>OK</b>
Battery functioning:	<b>Yes</b>	Parking lot:	<b>2821</b>
Number of doors:	<b>5</b>		
Number of seats:	<b>5</b>		
Number head rests:	<b>5</b>		
Rims summer:	<b>Aluminium</b>		
Category:	<b>Passenger Car</b>		
Oil level:	<b>OK</b>		

**Options**

Radio CD	Central consol F
Windows electric F	Luggage cover
Windows electric R	Rear parking sensors
Cruise Control	Type of Tow bar
Steering wheel multifunctional	<b>No Tow bar</b>
Seats F heated	
Radio multimedia	
Type of headlighting	<b>Headlighting Halogen</b>
Type of GPS	<b>GPS big screen color</b>
Type of Lining	<b>Lining leather</b>
Type of climate control	<b>Autom climate control</b>
Sport seats	

**Limited Technical Inspection**

Airco functioning	<b>OK</b>	Battery functioning	<b>Yes</b>
Tires wear profile	<b>OK</b>	Power steering	<b>Yes</b>
Idle position	<b>OK</b>	Sound engine	<b>OK</b>
Engine startingtime	<b>OK</b>	Clutch test	<b>OK</b>
Exhaust gass	<b>OK</b>	Wiper fluid level	<b>OK</b>
Handbrake	<b>OK</b>	Transmission	<b>OK</b>
		Lighting	<b>OK</b>
		Wiperblades	<b>OK</b>

**Degree of wear**

<b>235/60/18/103 V LightMetal</b>				
Summer tyres:	Fr.L.	<b>Continental: 3 mm</b>	Fr.R.	<b>Continental: 3 mm</b>
	Re.L.	<b>Michelin: 6 mm</b>	Re.R.	<b>Michelin: 6 mm</b>

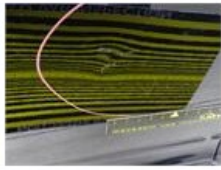
**Assistance equipment**

Emergency spare wheel	<b>Yes</b>	Jack	<b>Yes</b>
Total cost ex VAT			<b>1456,02</b>
Bumper R, Scratch(es), Acceptable			<b>0,00</b>
<i>No pictures to display</i>			
Roof, Dent(s), Acceptable			<b>0,00</b>
<i>No pictures to display</i>			
Wing R R, Dent(s) and scratch(es), LI - Repair and paint (complete)			<b>369,84</b>



Door F L, Dent(s) and scratch(es), LI - Repair and paint (complete)

382,02



Bumper F, Scratch(es), LI - Repair and paint (complete)

254,16



Bonnet, Hail damage, PDR - Hail

450,00

