



**VOLKSWAGEN Golf: 1GWJ365**

Vinnnumber:	<b>WVWZZZAUZEP584140</b>	Versionname:	<b>GOLF VAR Highline 105PK</b>
First Registrationdate:	<b>19/05/2014</b>	Fiscalpower:	
Expertise Mileage:	<b>59946</b>	Power Kw:	<b>77</b>
Bodytype:	<b>Break</b>	Body color:	<b>Brown</b>
Gearbox:	<b>MAN 5 VIT</b>	Paint type:	<b>Metalic</b>
Transmission:	<b>Front</b>	Rims summer:	<b>Aluminium</b>
Fueltype:	<b>Diesel</b>	Oil level:	<b>OK</b>
Battery functioning:	<b>Yes</b>	Parking lot:	<b>3710</b>
Number of doors:	<b>5</b>		
Number of seats:	<b>5</b>		
Number head rests:	<b>5</b>		
Rims summer:	<b>Aluminium</b>		
Category:	<b>Passenger Car</b>		
Oil level:	<b>OK</b>		
Registration Certificate Car (BE):	<b>Yes</b>		

**Options**

Windows electric F	Luggage cover
Windows electric R	Type of Tow bar
Cruise Control	<b>No Tow bar</b>
Steering wheel multifunctional	
Radio multimedia	
Type of headlighting	<b>Headlighting Halogen</b>
Type of GPS	<b>GPS big screen color</b>
Type of Lining	<b>Lining fabrics</b>
Type of climate control	<b>Autom climate control</b>

**Limited Technical Inspection**

Airco functioning	<b>OK</b>	Battery functioning	<b>Yes</b>
Tires wear profile	<b>OK</b>	Power steering	<b>Yes</b>
Idle position	<b>OK</b>	Sound engine	<b>OK</b>
Engine startingtime	<b>OK</b>	Clutch test	<b>OK</b>
Exhaust gass	<b>OK</b>	Wiper fluid level	<b>OK</b>
Handbrake	<b>OK</b>	Transmission	<b>OK</b>
		Lighting	<b>OK</b>
		Wiperblades	<b>OK</b>

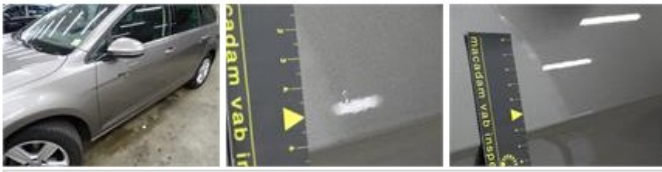
**Degree of wear**

<b>205/55/16/91 H LightMetal</b>				
Summer tyres:	Fr.L.	<b>Michelin: 4 mm</b>	Fr.R.	<b>Michelin: 4 mm</b>
	Re.L.	<b>Michelin: 5 mm</b>	Re.R.	<b>Michelin: 5 mm</b>

**Assistance equipment**

Spare wheel	<b>Yes</b>	Jack	<b>Yes</b>
Number of charging cables (normal)	<b>0</b>		
Number of charging cables (rapid charge)	<b>0</b>		

Total cost ex VAT	0,00
Door F L, Bad repair, Acceptable	0,00



Door R R, Scratch(es), Acceptable	0,00
<i>No pictures to display</i>	
Wing R L, Repaired, Acceptable	0,00
<i>No pictures to display</i>	
Alloy rim F R, Scratch(es), Acceptable	0,00
<i>No pictures to display</i>	
Door R L, Repaired, Acceptable	0,00
<i>No pictures to display</i>	
Rear window, Scratch(es), Acceptable	0,00
<i>No pictures to display</i>	