



BMW 5 TOURING: 1JPT807

Vinnumber:	WBA5L51000G086438	Versionname:	2.0 520D (120KW) XDRIVE AUTO TOURING
First Registrationdate:	3/02/2015	Fiscalpower:	
Expertise Mileage:	153022	Power Kw:	120
Bodytype:	Break	Body color:	Dark Brown
Gearbox:	Automatic	Paint type:	Metalic
Transmission:	Front	Rims summer:	Aluminium
Fueltype:	Diesel	Oil level:	OK
Battery functioning:	Yes	Parking lot:	TRU12
Number of doors:	5		
Number of seats:	5		
Number head rests:	5		
Rims summer:	Aluminium		
Category:	Passenger Car		
Oil level:	OK		
Registration Certificate Car (BE):	Yes		

Options

Radio CD		Seats electric F L	
Windows electric F		Seats electric F R	
Windows electric R		Sun Roof electric	
Cruise Control		Central consol F	
Steering wheel multifunctional		Luggage cover	
Seats F heated		Front parking sensors	
Radio multimedia		Rear parking sensors	
Type of headlighting	Headlighting Xenon	Type of Tow bar	Tow bar fixed
Type of GPS	GPS big screen color		
Type of Lining	Lining leather		
Type of climate control	Autom climate control		

Limited Technical Inspection

Airco functioning	OK	Battery functioning	Yes
Tires wear profile	OK	Power steering	Yes
Idle position	OK	Sound engine	OK
Engine startingtime	OK	Clutch test	NOT OK
Exhaust gass	OK	Wiper fluid level	OK
Handbrake	OK	Transmission	NOT OK
		Lighting	OK
		Wiperblades	OK

Degree of wear

	245/45/18/100 V LightMetal			
Winter tyres:	Fr.L.	Michelin: 4 mm	Fr.R.	Michelin: 4 mm
	Re.L.	Michelin: 4 mm	Re.R.	Michelin: 4 mm

Assistance equipment

Number of charging cables (normal)	0
Number of charging cables (rapid charge)	0

Total cost ex VAT	2274,00
Windscreen, Crack, E - Replace	560,64



Reflector, Crack, E - Replace

64,00



Boot carpet, Damaged, E - Replace

120,00



Bumper R, Scratch(es), LI - Repair and paint (complete)

254,16



Ignition key, Missing, E - Replace

150,00

No pictures to display

Alloy rim F R, Scratch(es), LI - Repair and paint (complete)

95,00



Alloy rim R R, Scratch(es), LI - Repair and paint (complete)

95,00



Alloy rim F L, Scratch(es), LI - Repair and paint (complete)

95,00



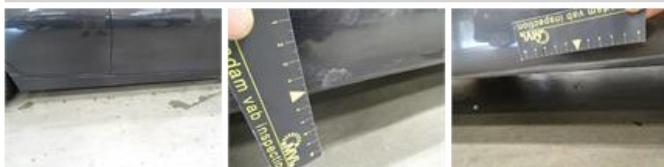
Alloy rim R L, Scratch(es), LI - Repair and paint (complete)

95,00



Sill outer R, Dent(s) and scratch(es), LI - Repair and paint (complete)

372,60



Backrest cover F L, Worn, Acceptable

0,00

No pictures to display

Sill outer L, Scratch(es), LI - Repair and paint (complete)

372,60

