



**OPEL Astra: 1HFS975**

Vinnumber:	<b>WOLPE8E64E8052718</b>	Versionname:	<b>ASTRA BRE ecoFLEX Cosmo St/St 110PK</b>
First Registrationdate:	<b>9/07/2014</b>	Fiscalpower:	
Expertise Mileage:	<b>176383</b>	Power Kw:	<b>81</b>
Bodytype:	<b>Break</b>	Body color:	<b>Brown</b>
Gearbox:	<b>MAN 6 VIT</b>	Paint type:	<b>Metalic</b>
Transmission:	<b>Front</b>	Rims summer:	<b>Aluminium</b>
Fueltype:	<b>Diesel</b>	Oil level:	<b>OK</b>
Battery functioning:	<b>Yes</b>	Parking lot:	<b>2119</b>
Number of doors:	<b>5</b>		
Number of seats:	<b>5</b>		
Number head rests:	<b>4</b>		
Rims summer:	<b>Aluminium</b>		
Category:	<b>Passenger Car</b>		
Oil level:	<b>OK</b>		
Registration Certificate Car (BE):	<b>Yes</b>		

**Options**

Radio CD		Central consol F	
GPS storage		Luggage cover	
GPS storage	<b>HD</b>	Front parking sensors	
Windows electric F		Rear parking sensors	
Windows electric R		Type of Tow bar	<b>No Tow bar</b>
Cruise Control			
Steering wheel multifunctional			
Radio multimedia			
Type of headlighting	<b>Headlighting Halogen</b>		
Type of GPS	<b>GPS big screen color</b>		
Type of Lining	<b>Lining semi-leather</b>		
Type of climate control	<b>Autom climate control</b>		

**Limited Technical Inspection**

Airco functioning	<b>OK</b>	Battery functioning	<b>Yes</b>
Tires wear profile	<b>OK</b>	Power steering	<b>Yes</b>
Idle position	<b>OK</b>	Sound engine	<b>OK</b>
Engine startingtime	<b>OK</b>	Clutch test	<b>OK</b>
Exhaust gass	<b>OK</b>	Wiper fluid level	<b>OK</b>
Handbrake	<b>OK</b>	Transmission	<b>OK</b>
		Lighting	<b>OK</b>
		Wiperblades	<b>OK</b>

**Degree of wear**

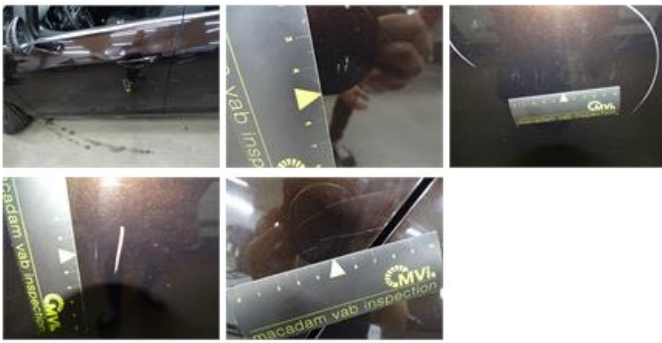
	<b>225/50/17/94 V LightMetal</b>			
Summer tyres:	Fr.L.	<b>Uniroyal: 7 mm</b>	Fr.R.	<b>Uniroyal: 7 mm</b>
	Re.L.	<b>Uniroyal: 5 mm</b>	Re.R.	<b>Uniroyal: 5 mm</b>

**Assistance equipment**

Spare wheel	<b>Yes</b>	Jack	<b>Yes</b>
Number of charging cables (normal)	<b>0</b>		
Number of charging cables (rapid charge)	<b>0</b>		

Total cost ex VAT 2322,88

Door F L, Scratch(es), LI - Repair and paint (complete) 0,00



Door R R, Scratch(es), LI - Repair and paint (complete)

318,35



Door R L, Scratch(es), LI - Repair and paint (complete)

318,35



Alloy rim R L, Scratch(es), LI - Repair and paint (complete)

95,00



Door F R, Scratch(es), Acceptable

0,00

No pictures to display

Bonnet, Scratch(es), LI - Repair and paint (complete)

290,08







Wing R L, Scratch(es), Acceptable 0,00

No pictures to display

Rearview mirror housing L, Scratch(es), Acceptable 0,00

No pictures to display

Rear window, Scratch(es), Acceptable 0,00



Floor covering F L, Hole, Smart repair 64,32



Wing F L, Scratch(es), LI - Repair and paint (complete) 0,00



Roof, Chemical pollution, LI - Repair and paint (complete) 481,50



Rocker panel inner F L, Scratch(es), Acceptable 0,00

No pictures to display

Internal Boot Lining R, Broken, E - Replace 30,00



Tailgate, Scratch(es), LI - Repair and paint (complete) 301,68





Bumper F, Dent(s) and scratch(es), LI - Repair and paint (complete) 211,80



Bumper R, Scratch(es), LI - Repair and paint (complete) 211,80



Wing R R, Scratch(es), Acceptable 0,00

No pictures to display

Wing F R, Scratch(es), Acceptable 0,00

No pictures to display