



SKODA Superb: 1GVV708

| | | | |
|------------------------------------|--------------------------|--------------|------------------------------------|
| Vinnumber: | TMBJE73T9E9057160 | Versionname: | SUPERB COMBI Elegance 140PK |
| First Registrationdate: | 14/05/2014 | Fiscalpower: | |
| Expertise Mileage: | 153058 | Power Kw: | 103 |
| Bodytype: | Break | Body color: | Black |
| Gearbox: | MAN 6 VIT | Paint type: | Metalic |
| Transmission: | Front | Rims summer: | Aluminium |
| Fueltype: | Diesel | Oil level: | OK |
| Battery functioning: | Yes | Parking lot: | 1308 |
| Number of doors: | 5 | | |
| Number of seats: | 5 | | |
| Number head rests: | 5 | | |
| Rims summer: | Aluminium | | |
| Category: | Passenger Car | | |
| Oil level: | OK | | |
| Registration Certificate Car (BE): | Yes | | |

Options

| | | | |
|--------------------------------|-------------------------------------|-----------------------|--------------------------|
| Radio CD | | Seats R heated | |
| GPS storage | HD | Seats electric F L | |
| GPS storage | | Seats electric F R | |
| Windows electric F | | Central consol F | |
| Windows electric R | | Luggage cover | |
| Cruise Control | | Front parking sensors | |
| Steering wheel multifunctional | | Rear parking sensors | |
| Seats F heated | | Type of Tow bar | Tow bar removable |
| Radio multimedia | | | |
| Type of headlighting | Headlighting Xenon | | |
| Type of GPS | GPS big screen color | | |
| Type of Lining | Lining leather and alcantara | | |
| Type of climate control | Autom climate control | | |

Limited Technical Inspection

| | | | |
|---------------------|-----------|---------------------|------------|
| Airco functioning | OK | Battery functioning | Yes |
| Tires wear profile | OK | Power steering | Yes |
| Idle position | OK | Sound engine | OK |
| Engine startingtime | OK | Clutch test | OK |
| Exhaust gass | OK | Wiper fluid level | OK |
| Handbrake | OK | Transmission | OK |
| | | Lighting | OK |
| | | Wiperblades | OK |

Degree of wear

| | | | | |
|----------------------------------|-------|----------------------|-------|----------------------|
| 225/45/17/94 Y LightMetal | | | | |
| Summer tyres: | Fr.L. | Fulda: 7 mm | Fr.R. | Fulda: 7 mm |
| | Re.L. | Pirelli: 5 mm | Re.R. | Pirelli: 5 mm |

Assistance equipment

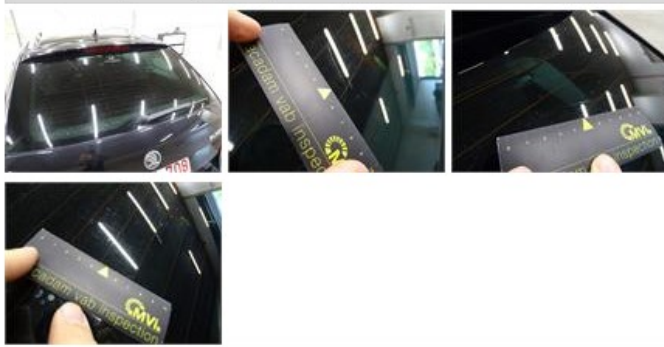
| | | | |
|--|------------|------|------------|
| Spare wheel | Yes | Jack | Yes |
| Number of charging cables (normal) | 0 | | |
| Number of charging cables (rapid charge) | 0 | | |

Total cost ex VAT 612,09

Door F L, Scratch(es), Acceptable 0,00

No pictures to display

Rear window, Scratch(es), Acceptable 0,00



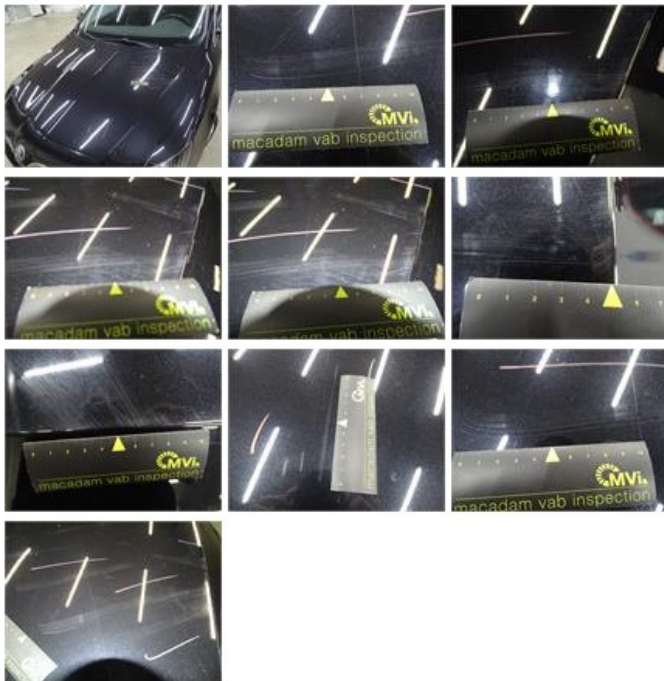
Door R L, Bad repair, Acceptable

0,00



Bonnet, Scratch(es), LI - Repair and paint (complete)

348,09



Alloy rim F L, Scratch(es), LI - Repair and paint (complete)

95,00



Protection plate M, Hole, E - Replace

74,00



Tailgate, Scratch(es), Acceptable

0,00

No pictures to display

Alloy rim R L, Scratch(es), Acceptable

0,00

No pictures to display

Alloy rim R R, Scratch(es), Acceptable

0,00

No pictures to display

Alloy rim F R, Scratch(es), LI - Repair and paint (complete)

95,00



Door F R, Dent(s) and scratch(es), Acceptable

0,00

No pictures to display