



**RENAULT Grand Scenic: 1GIC315**

Vinnumber:	<b>VF1JZ14M650427771</b>	Versionname:	<b>GRAND SCENIC Energy Life 5pl.110PK</b>
First Registrationdate:	<b>13/02/2014</b>	Fiscalpower:	
Expertise Mileage:	<b>180958</b>	Power Kw:	<b>81</b>
Bodytype:		Body color:	<b>Burgundy</b>
Gearbox:	<b>MAN 6 VIT</b>	Paint type:	<b>Metalic</b>
Transmission:	<b>Front</b>	Rims summer:	<b>Steel</b>
Fueltype:	<b>Diesel</b>	Oil level:	<b>OK</b>
Battery functioning:	<b>Yes</b>	Parking lot:	<b>3207</b>
Number of doors:	<b>5</b>		
Number of seats:	<b>5</b>		
Number head rests:	<b>5</b>		
Rims summer:	<b>Steel</b>		
Category:	<b>Passenger Car</b>		
Oil level:	<b>OK</b>		
Registration Certificate Car (BE):	<b>Yes</b>		

**Options**

Radio CD		Luggage cover	
GPS storage		Front parking sensors	
GPS storage	<b>SD</b>	Rear parking sensors	
Windows electric F		Type of Tow bar	<b>Tow bar fixed</b>
Windows electric R			
Cruise Control			
Steering wheel multifunctional			
Radio multimedia			
Type of headlighting	<b>Headlighting Halogen</b>		
Type of GPS	<b>GPS big screen color</b>		
Type of Lining	<b>Lining fabrics</b>		
Type of climate control	<b>Autom climate control</b>		

**Limited Technical Inspection**

Airco functioning	<b>OK</b>	Battery functioning	<b>Yes</b>
Tires wear profile	<b>OK</b>	Power steering	<b>Yes</b>
Idle position	<b>OK</b>	Sound engine	<b>OK</b>
Engine startingtime	<b>OK</b>	Clutch test	<b>OK</b>
Exhaust gass	<b>OK</b>	Wiper fluid level	<b>OK</b>
Handbrake	<b>OK</b>	Transmission	<b>OK</b>
		Lighting	<b>OK</b>
		Wiperblades	<b>OK</b>

**Degree of wear**

	<b>205/60/16/96 H Steel</b>			
Winter tyres:	Fr.L.	<b>Michelin: 5 mm</b>	Fr.R.	<b>Michelin: 5 mm</b>
	Re.L.	<b>Goodyear: 5 mm</b>	Re.R.	<b>Goodyear: 5 mm</b>

**Assistance equipment**

Repair kit	<b>Yes</b>	Compressor	<b>Yes</b>
Number of charging cables (normal)	<b>0</b>		
Number of charging cables (rapid charge)	<b>0</b>		

Total cost ex VAT 2274,13

Glove compartment lid, Scratch(es), Smart repair 110,64



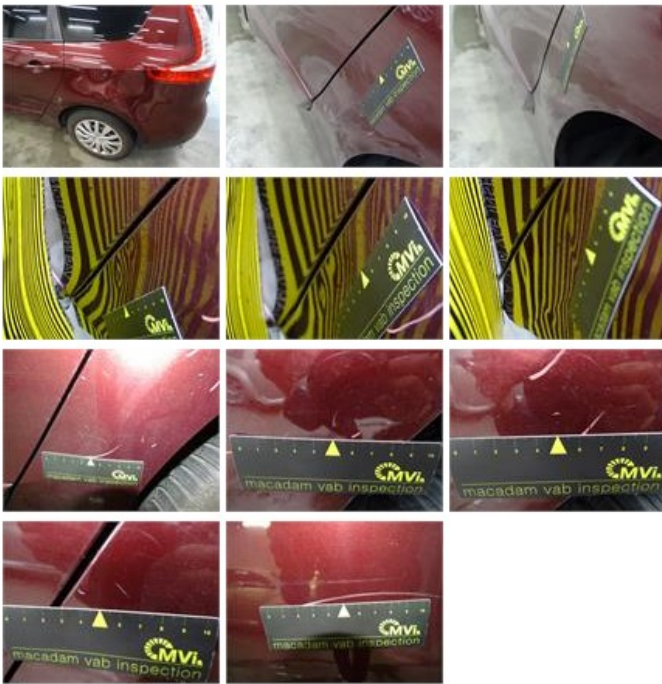
Bumper F, Scratch(es), LI - Repair and paint (complete)

211,80



Wing R L, Dent(s) and scratch(es), LI - Repair and paint (complete)

308,20



Wheel cover R L, Not original part, Acceptable

0,00

No pictures to display

Bumper R, Scratch(es), LI - Repair and paint (complete)

211,80



Wing F R, Scratch(es), Acceptable

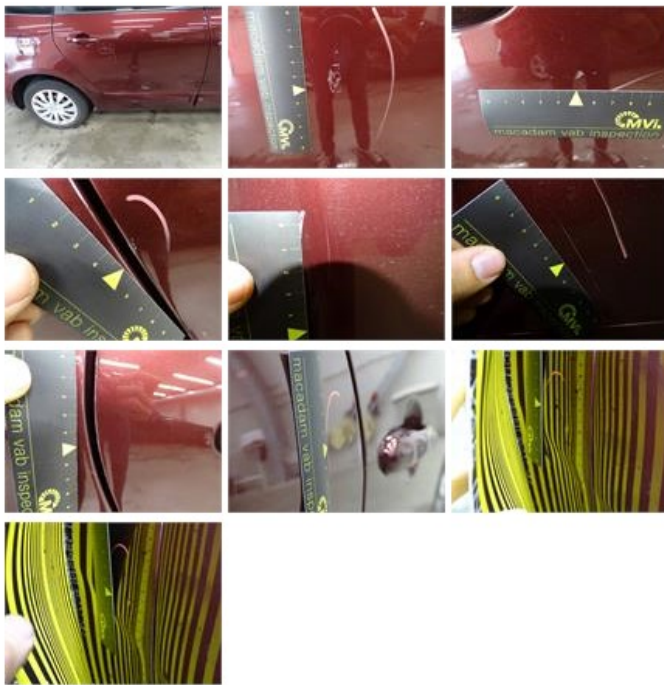
0,00

No pictures to display

Door R R, Dent(s) and scratch(es), LI - Repair and paint (complete)

318,35





Wing R R, Dent(s) and scratch(es), Acceptable 0,00

No pictures to display

Backrest cover R L, Hole, Smart repair 64,32



Wheel cover R R, Scratch(es), Acceptable 0,00

No pictures to display

Door F L, Dent(s) and scratch(es), LI - Repair and paint (complete) 318,35



Tailgate, Dent(s) and scratch(es), LI - Repair and paint (complete) 301,68



Wheel cover F R, Scratch(es), Acceptable 0,00

No pictures to display

Wheel cover F L, Scratch(es), Acceptable 0,00

No pictures to display

Door R L, Dent(s) and scratch(es), LI - Repair and paint (complete) 318,35



Rear bulkhead lining, Scratch(es), Acceptable 0,00

No pictures to display

Wing F L, Scratch(es), Acceptable 0,00

No pictures to display

Bumper F M, Deformed / Strained, Smart repair 110,64

