



**VOLKSWAGEN CADDY: SF8396**

Vinnumber:	<b>WV1ZZZ2KZFX139620</b>	Versionname:	<b>CADDY VAN B/F Base 75kw Spec.LUXEMBOUR</b>
First Registrationdate:	<b>13/05/2015</b>	Fiscalpower:	
Expertise Mileage:	<b>64561</b>	Power Kw:	<b>75</b>
Bodytype:		Body color:	<b>White</b>
Gearbox:	<b>MAN 5 VIT</b>	Paint type:	<b>Opaque</b>
Transmission:	<b>Front</b>	Rims summer:	<b>Steel</b>
Fueltype:	<b>Diesel</b>	Oil level:	<b>OK</b>
Maintenance:	<b>OK</b>	Parking lot:	<b>3211</b>
Battery functioning:	<b>Yes</b>		
Number of doors:	<b>5</b>		
Number of seats:	<b>2</b>		
Number head rests:	<b>2</b>		
Rims summer:	<b>Steel</b>		
Category:	<b>Light Commercial Vehicle</b>		
Oil level:	<b>OK</b>		
Registration Certificate Car (BE):	<b>Yes</b>		

**Options**

Radio CD		Rear parking sensors
Windows electric F		
Type of headlighting	<b>Headlighting Halogen</b>	
Type of Lining	<b>Lining fabrics</b>	
Type of climate control	<b>Manual climate control</b>	

**Limited Technical Inspection**

Airco functioning	<b>OK</b>	Battery functioning	<b>Yes</b>
Tires wear profile	<b>OK</b>	Power steering	<b>Yes</b>
Idle position	<b>OK</b>	Sound engine	<b>OK</b>
Engine startingtime	<b>OK</b>	Clutch test	<b>OK</b>
Exhaust gass	<b>OK</b>	Wiper fluid level	<b>OK</b>
Handbrake	<b>OK</b>	Transmission	<b>OK</b>
		Lighting	<b>OK</b>
		Wiperblades	<b>OK</b>

**Degree of wear**

	<b>195/65/15/92 MS Steel</b>			
Winter tyres:	Fr.L.	<b>Dunlop: 4 mm</b>	Fr.R.	<b>Dunlop: 4 mm</b>
	Re.L.	<b>Dunlop: 5 mm</b>	Re.R.	<b>Dunlop: 5 mm</b>

**Assistance equipment**

Repair kit	<b>Yes</b>	Compressor	<b>Yes</b>
------------	------------	------------	------------

Total cost ex VAT 715,72

Wing R L, Dent(s) and scratch(es), LI - Repair and paint (complete) 327,15



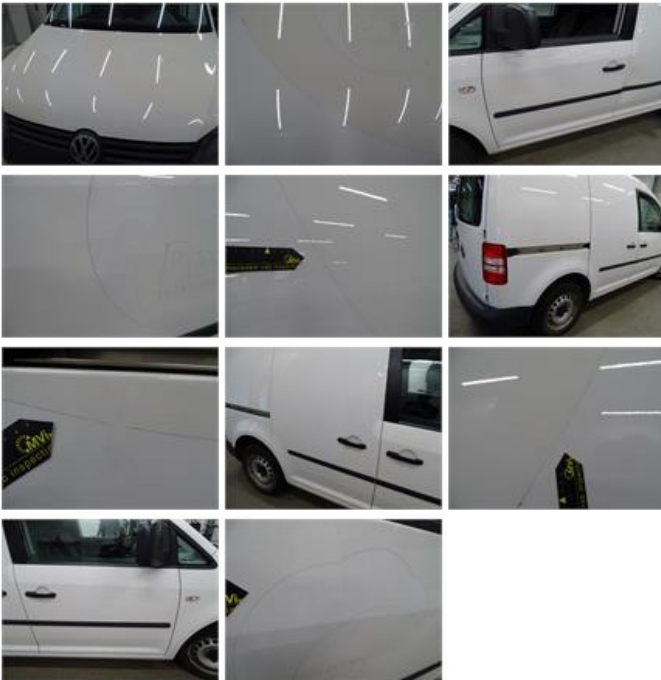
Sidewall panel RL, Hole, E - Replace

24,60



Bodywork, Glue residues, Acceptable

0,00



Windscreen, Stone chip(s), Windscreen repair

88,20



Wing F R, Dent(s), LI - Repair and paint (complete)

165,13



Bumper R, Scratch(es), Smart repair

110,64

