



OPEL Astra: 1GHM413

Vinnumber:	WOLPD8EW2E8029277	Versionname:	ASTRA BRE ecoFLEX Business 110PK
First Registrationdate:	10/02/2014	Fiscalpower:	
Expertise Mileage:	115128	Power Kw:	81
Bodytype:	Break	Body color:	Grey
Gearbox:	MAN 6 VIT	Paint type:	Metalic
Transmission:	Front	Rims summer:	Steel
Fueltype:	Diesel	Oil level:	OK
Battery functioning:	Yes	Parking lot:	2403
Number of doors:	5		
Number of seats:	5		
Number head rests:	5		
Rims summer:	Steel		
Category:	Passenger Car		
Oil level:	OK		
Registration Certificate Car (BE):	Yes		

Options

Radio CD	Central consol F	
Windows electric F	Luggage cover	
Windows electric R	Rear parking sensors	
Cruise Control	Type of Tow bar	No Tow bar
Steering wheel multifunctional		
Seats F heated		
Radio multimedia		
Type of headlighting	Headlighting Halogen	
Type of GPS	GPS big screen color	
Type of Lining	Lining fabrics	
Type of climate control	Autom climate control	

Limited Technical Inspection

Airco functioning	OK	Battery functioning	Yes
Tires wear profile	OK	Power steering	Yes
Idle position	OK	Sound engine	OK
Engine startingtime	OK	Clutch test	OK
Exhaust gass	OK	Wiper fluid level	OK
Handbrake	OK	Transmission	OK
		Lighting	OK
		Wiperblades	OK

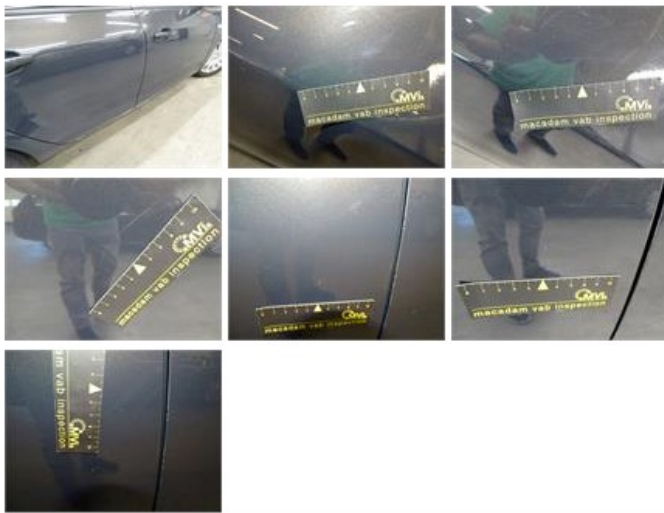
Degree of wear

215/60/16/95 V Steel				
Summer tyres:	Fr.L.	Continental: 4 mm	Fr.R.	Continental: 4 mm
	Re.L.	Continental: 4 mm	Re.R.	Continental: 4 mm

Assistance equipment

Emergency spare wheel	Yes	Jack	Yes
Number of charging cables (normal)	0		
Number of charging cables (rapid charge)	0		

Total cost ex VAT	1354,88
Bumper F, Scratch(es), Acceptable	0,00
<i>No pictures to display</i>	
Door R R, Scratch(es), LI - Repair and paint (complete)	318,35



Wheel cover R R, Scratch(es), Acceptable 0,00

No pictures to display

Rear window, Scratch(es), E - Replace 370,00



Wing R R, Scratch(es), Acceptable 0,00

No pictures to display

Door F R, Scratch(es), Acceptable 0,00

No pictures to display

Door F L, Dent(s) and scratch(es), LI - Repair and paint (complete) 318,35



Window R L door, Scratch(es), E - Replace 128,00



Wing F L, Dent(s) and scratch(es), LI - Repair and paint (complete) 220,18

