



MERCEDES GLC: 1NRF112

Vinnumber:	WDC2539461F085044	Versionname:	2.0 GLC 250 LAUNCH EDITION AMG
First Registrationdate:	7/04/2016	Fiscalpower:	
Expertise Mileage:	34927	Power Kw:	155
Bodytype:		Body color:	Grey
Gearbox:	Automatic	Paint type:	Metalic
Transmission:	4 Weel	Rims summer:	Aluminium
Fueltype:	Petrol	Oil level:	OK
Battery functioning:	Yes	Parking lot:	2114
Number of doors:	5		
Number of seats:	5		
Number head rests:	5		
Rims summer:	Aluminium		
Category:	Passenger Car		
Oil level:	OK		
Registration Certificate Car (BE):	Yes		

Options

Radio CD	Seats electric F L
Windows electric F	Seats electric F R
Windows electric R	Central consol F
Cruise Control	Luggage cover
Steering wheel multifunctional	Front parking sensors
Seats F heated	Rear parking sensors
Radio multimedia	Type of Tow bar
Type of headlighting	Headlighting LED
Type of GPS	GPS big screen color
Type of Lining	Lining artificial leather and alcantara
Type of climate control	Autom climate control
	No Tow bar

Limited Technical Inspection

Airco functioning	OK	Battery functioning	Yes
Tires wear profile	OK	Power steering	Yes
Idle position	OK	Sound engine	OK
Engine startingtime	OK	Clutch test	OK
Exhaust gass	OK	Wiper fluid level	OK
Handbrake	OK	Transmission	OK
		Lighting	OK
		Wiperblades	OK

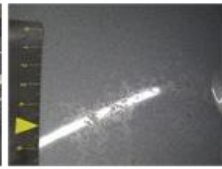
Degree of wear

235/55/19/101 H LightMetal				
Winter tyres:	Fr.L.	Continental: 5 mm	Fr.R.	Continental: 5 mm
	Re.L.	Continental: 5 mm	Re.R.	Continental: 5 mm

Assistance equipment

Number of charging cables (normal)	0
Number of charging cables (rapid charge)	0

Total cost ex VAT	369,84
Bonnet, Chemical polution, Acceptable	0,00
<i>No pictures to display</i>	
Wing R R, Dent(s), Acceptable	0,00
<i>No pictures to display</i>	
Roof, Chemical polution, LI - Repair and paint (complete)	0,00



Wing R L, Scratch(es), LI - Repair and paint (complete)

369,84



Door R L, Scratch(es), Acceptable

0,00

No pictures to display

Bumper F, Scratch(es), Acceptable

0,00

No pictures to display