



FORD KUGA: 1KLX341

Vinnumber:	WFOAXXWPMFAK13113	Versionname:	2.0 TDCI 2WD 88KW TITANIUM
First Registrationdate:	29/05/2015	Fiscalpower:	
Expertise Mileage:	93498	Power Kw:	88
Bodytype:		Body color:	Black
Gearbox:	MAN 6 VIT	Paint type:	Metalic
Transmission:	Front	Rims summer:	Aluminium
Fueltype:	Diesel	Oil level:	OK
Maintenance:	OK	Parking lot:	2830
Battery functioning:	Yes		
Number of doors:	5		
Number of seats:	5		
Number head rests:	5		
Rims summer:	Aluminium		
Category:	Passenger Car		
Oil level:	OK		
Registration Certificate Car (BE):	Yes		

Options

Radio CD		Central consol F	
GPS storage	SD	Luggage cover	
GPS storage		Front parking sensors	
Windows electric F		Rear parking sensors	
Windows electric R		Type of Tow bar	Tow bar removable
Cruise Control			
Steering wheel multifunctional			
Type of headlighting	Headlighting Halogen		
Type of GPS	GPS big screen color		
Type of Lining	Lining semi-leather		
Type of climate control	Autom climate control		

Limited Technical Inspection

Airco functioning	OK	Battery functioning	Yes
Tires wear profile	OK	Power steering	Yes
Idle position	OK	Sound engine	OK
Engine startingtime	OK	Clutch test	OK
Exhaust gass	OK	Wiper fluid level	OK
Handbrake	OK	Transmission	OK
		Lighting	OK
		Wiperblades	OK

Degree of wear

235/55/17/103 Y LightMetal				
Summer tyres:	Fr.L.	Vredestein: 7 mm	Fr.R.	Vredestein: 7 mm
	Re.L.	Hankook: 6 mm	Re.R.	Hankook: 6 mm

Assistance equipment

Emergency spare wheel	Yes	Jack	Yes
-----------------------	------------	------	------------

Total cost ex VAT	693,71
-------------------	---------------

Door R R, Scratch(es), Acceptable	0,00
-----------------------------------	-------------



Wing R L, Scratch(es), Acceptable 0,00



Door F L, Dent(s) and scratch(es), Acceptable 0,00



Wing F L, Repaired, No repair 0,00



Wing R R, Scratch(es), Acceptable 0,00



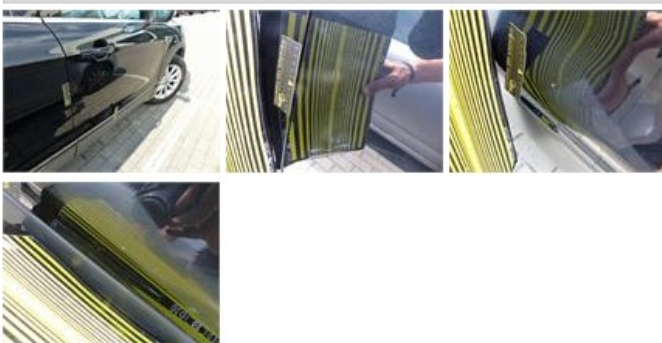
Bumper R, Scratch(es), Acceptable 0,00



Spoiler R, Scratch(es), Acceptable 0,00



Door F R, Dent(s) and scratch(es), LI - Repair and paint (complete) 366,35



Bumper F, Bad repair, LI - Repair and paint (complete) 211,80





Door R L, Scratch(es), Acceptable

0,00



Tailgate, Scratch(es), It - Spot repair

115,56

