


MERCEDES B: 1HAU118

Vinnumber:	WDD2462431J273252	Versionname:	B 200 BE 156PK
First Registrationdate:	5/06/2014	Fiscalpower:	
Expertise Mileage:	31466	Power Kw:	115
Bodytype:	Hatchback	Body color:	Grey
Gearbox:	MAN 6 VIT	Paint type:	Metallic
Transmission:	Front	Rims summer:	Aluminium
Fueltype:	Petrol	Oil level:	OK
Battery functioning:	Yes	Parking lot:	4824
Number of doors:	5		
Number of seats:	5		
Number head rests:	5		
Rims summer:	Aluminium		
Category:	Passenger Car		
Oil level:	OK		
Registration Certificate Car (BE):	Yes		

Options

Radio CD		Sun Roof electric	
GPS storage		Central consol F	
GPS storage	HD	Luggage cover	
Windows electric F		Front parking sensors	
Windows electric R		Rear parking sensors	
Steering wheel multifunctional		Type of Tow bar	No Tow bar
Radio multimedia			
Type of headlighting	Headlighting Xenon		
Type of GPS	GPS big screen color		
Type of Lining	Lining artificial leather		
Type of climate control	Manual climate control		

Limited Technical Inspection

Airco functioning	OK	Battery functioning	Yes
Tires wear profile	OK	Power steering	Yes
Idle position	OK	Sound engine	OK
Engine startingtime	OK	Clutch test	OK
Exhaust gass	OK	Wiper fluid level	OK
Handbrake	OK	Transmission	OK
		Lighting	OK
		Wiperblades	OK

Degree of wear

	225/45/17/91 W LightMetal			
Summer tyres:	Fr.L.	Continental: 5 mm	Fr.R.	Continental: 5 mm
	Re.L.	Continental: 6 mm	Re.R.	Continental: 6 mm

Assistance equipment

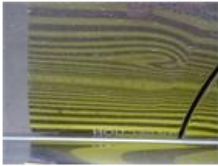
Repair kit	Yes	Compressor	Yes
Total cost ex VAT			1112,70
Sill outer R, Scratch(es), It - Spot repair			0,00



Alloy rim R L, Scratch(es), LI - Repair and paint (complete) 95,00



Door R L, Dent(s), LI - Repair and paint (complete) 366,35



Wing R L, Dent(s), LI - Repair and paint (complete) 0,00



Alloy rim F R, Scratch(es), LI - Repair and paint (complete) 95,00



Door F L, Scratch(es), Acceptable 0,00

No pictures to display

Door R R, Dent(s) and scratch(es), LI - Repair and paint (complete) 366,35



Wing R R, Dent(s) and scratch(es), LI - Repair and paint (complete) 0,00



Alloy rim R R, Scratch(es), LI - Repair and paint (complete) 95,00



Alloy rim F L, Scratch(es), LI - Repair and paint (complete) 95,00

