



**AUDI A6 AVANT: 1KUA935**

Vinnumber:	<b>WAUZZZ4G8GN039244</b>	Versionname:	<b>2.0 TDI ULTRA 100KW S TRONIC</b>
First Registrationdate:	<b>3/07/2015</b>	Fiscalpower:	
Expertise Mileage:	<b>164373</b>	Power Kw:	<b>100</b>
Bodytype:	<b>Break</b>	Body color:	<b>Black</b>
Gearbox:	<b>Automatic</b>	Paint type:	<b>Metalic</b>
Transmission:	<b>Front</b>	Rims summer:	<b>Aluminium</b>
Fueltype:	<b>Diesel</b>	Oil level:	<b>OK</b>
Battery functioning:	<b>Yes</b>	Parking lot:	<b>3120</b>
Number of doors:	<b>5</b>		
Number of seats:	<b>5</b>		
Number head rests:	<b>5</b>		
Rims summer:	<b>Aluminium</b>		
Category:	<b>Passenger Car</b>		
Oil level:	<b>OK</b>		
Registration Certificate Car (BE):	<b>Yes</b>		

**Options**

Radio CD		Central consol F	
GPS storage	<b>HD</b>	Luggage cover	
GPS storage		Front parking sensors	
Windows electric F		Rear parking sensors	
Windows electric R		Type of Tow bar	<b>No Tow bar</b>
Cruise Control			
Steering wheel multifunctional			
Seats F heated			
Radio multimedia			
Type of headlighting	<b>Headlighting Xenon</b>		
Type of GPS	<b>GPS big screen color</b>		
Type of Lining	<b>Lining leather</b>		
Type of climate control	<b>Autom climate control</b>		

**Limited Technical Inspection**

Airco functioning	<b>OK</b>	Battery functioning	<b>Yes</b>
Tires wear profile	<b>OK</b>	Power steering	<b>Yes</b>
Idle position	<b>OK</b>	Sound engine	<b>OK</b>
Engine startingtime	<b>OK</b>	Clutch test	<b>OK</b>
Exhaust gass	<b>OK</b>	Wiper fluid level	<b>OK</b>
Handbrake	<b>OK</b>	Transmission	<b>OK</b>
		Lighting	<b>OK</b>
		Wiperblades	<b>OK</b>

**Degree of wear**

<b>225/60/16/102 V LightMetal</b>				
Winter tyres:	Fr.L.	<b>Goodyear: 4 mm</b>	Fr.R.	<b>Goodyear: 4 mm</b>
	Re.L.	<b>Uniroyal: 7 mm</b>	Re.R.	<b>Uniroyal: 7 mm</b>

**Assistance equipment**

Repair kit	<b>Yes</b>	Compressor	<b>Yes</b>
Number of charging cables (normal)	<b>0</b>		
Number of charging cables (rapid charge)	<b>0</b>		

Total cost ex VAT 2462,46

Alloy rim R L, Scratch(es), Acceptable 0,00

No pictures to display

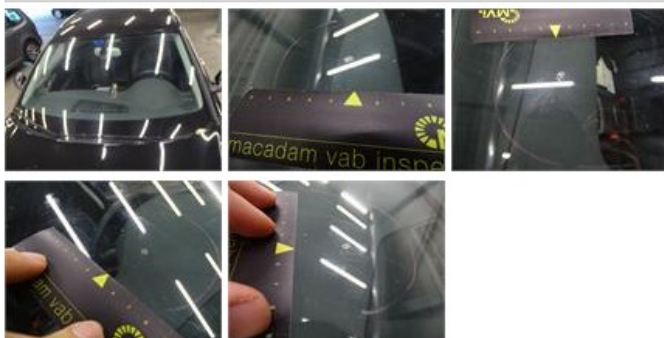
Roof, Chemical polution, LI - Repair and paint (complete) 577,80



Door R L, Scratch(es), Acceptable	0,00
<i>No pictures to display</i>	
Wing F L, Scratch(es), Acceptable	0,00
<i>No pictures to display</i>	
Bumper R, Scratch(es), LI - Repair and paint (complete)	254,16



Tailgate, Scratch(es), Acceptable	0,00
<i>No pictures to display</i>	
Windscreen, Repaired, Acceptable	0,00



Door F R, Scratch(es), LI - Repair and paint (complete)	382,02
---	--------





Bumper F, Scratch(es), LI - Repair and paint (complete)

254,16



Door R R, Dent(s) and scratch(es), LI - Repair and paint (complete)

382,02



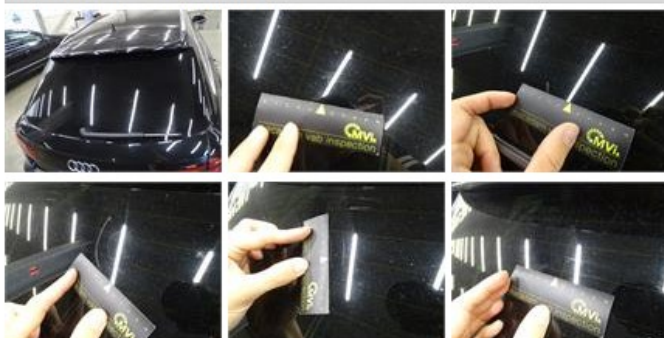
Wing R R, Dent(s), Acceptable

0,00

No pictures to display

Rear window, Scratch(es), Acceptable

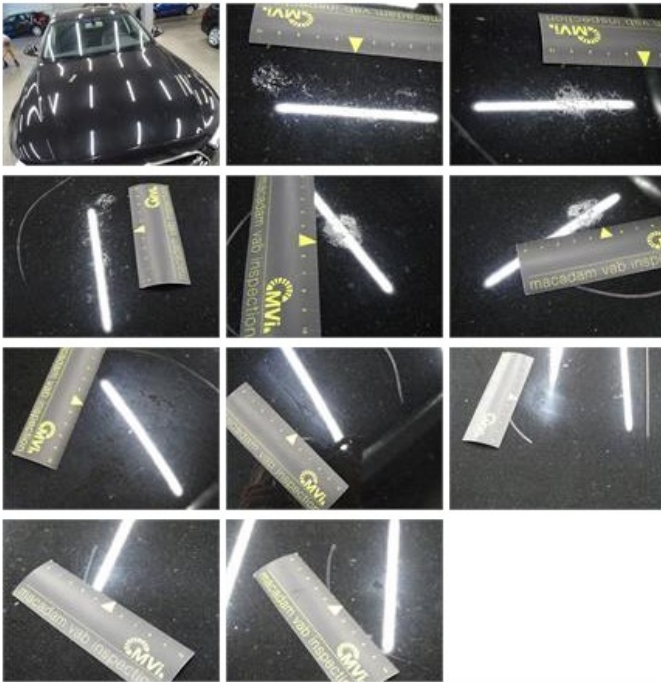
0,00





Bonnet, Chemical polution, LI - Repair and paint (complete)

348,09



Alloy rim F R, Scratch(es), Acceptable

0,00

No pictures to display

Wing F R, Dent(s) and scratch(es), LI - Repair and paint (complete)

264,21

