



BMW 3 BERLINE: 1JUF470

| | | | |
|------------------------------------|--------------------------|--------------|--|
| Vinnumber: | WBA3J31050F813905 | Versionname: | 2.0 318D (105KW) XDRIVE 4WD BERLINE |
| First Registrationdate: | 26/02/2015 | Fiscalpower: | |
| Expertise Mileage: | 42611 | Power Kw: | 105 |
| Bodytype: | Berline | Body color: | Blue |
| Gearbox: | MAN 6 VIT | Paint type: | Metalic |
| Transmission: | 4 Weel | Rims summer: | Aluminium |
| Fueltype: | Diesel | Oil level: | OK |
| Battery functioning: | Yes | Parking lot: | 3820 |
| Number of doors: | 4 | | |
| Number of seats: | 5 | | |
| Number head rests: | 5 | | |
| Rims summer: | Aluminium | | |
| Category: | Passenger Car | | |
| Oil level: | OK | | |
| Registration Certificate Car (BE): | Yes | | |

Options

| | | | |
|--------------------------------|------------------------------|----------------------|-------------------|
| Radio CD | | Sun Roof electric | |
| GPS storage | | Central consol F | |
| GPS storage | HD | Rear parking sensors | |
| Windows electric F | | Type of Tow bar | No Tow bar |
| Windows electric R | | | |
| Cruise Control | | | |
| Steering wheel multifunctional | | | |
| Radio multimedia | | | |
| Type of headlighting | Headlighting Xenon | | |
| Type of GPS | GPS big screen color | | |
| Type of Lining | Lining leather | | |
| Type of climate control | Autom climate control | | |

Limited Technical Inspection

| | | | |
|---------------------|-----------|---------------------|------------|
| Airco functioning | OK | Battery functioning | Yes |
| Tires wear profile | OK | Power steering | Yes |
| Idle position | OK | Sound engine | OK |
| Engine startingtime | OK | Clutch test | OK |
| Exhaust gass | OK | Wiper fluid level | OK |
| Handbrake | OK | Transmission | OK |
| | | Lighting | OK |
| | | Wiperblades | OK |

Degree of wear

| | | | | |
|----------------------------------|-------|---------------------|-------|---------------------|
| 225/50/17/94 W LightMetal | | | | |
| Summer tyres: | Fr.L. | Dunlop: 5 mm | Fr.R. | Dunlop: 5 mm |
| | Re.L. | Dunlop: 5 mm | Re.R. | Dunlop: 5 mm |

Assistance equipment

| | | | |
|--|----------|---------|------------|
| Number of charging cables (normal) | 0 | Runflat | Yes |
| Number of charging cables (rapid charge) | 0 | | |

| | |
|---|----------------|
| Total cost ex VAT | 2853,04 |
| Wing R L, Chemical polution, LI - Repair and paint (complete) | 308,20 |



| | |
|-----------------------------------|------|
| Door F R, Scratch(es), Acceptable | 0,00 |
| <i>No pictures to display</i> | |
| Door R L, Bad repair, Acceptable | 0,00 |



| | |
|--|-------|
| Alloy rim R R, Scratch(es), LI - Repair and paint (complete) | 95,00 |
|--|-------|



| | |
|---|--------|
| Bumper R, Scratch(es), LI - Repair and paint (complete) | 211,80 |
|---|--------|

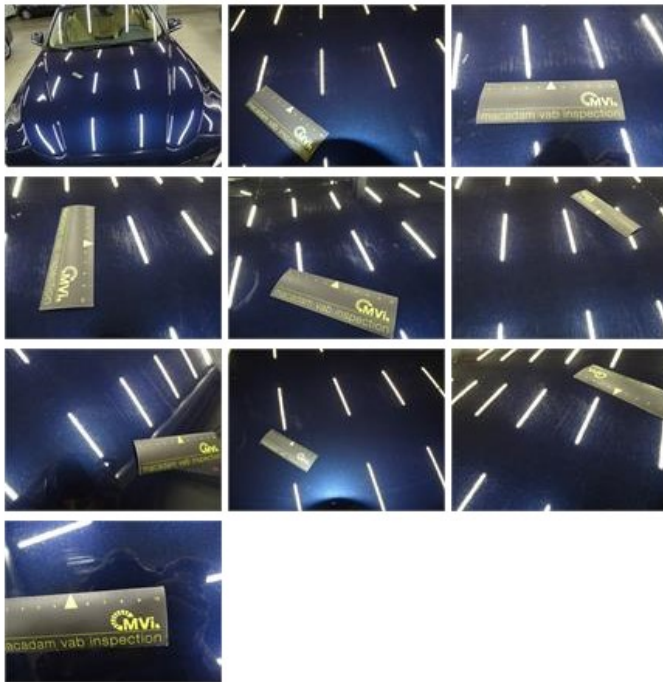


| | |
|--|--------|
| Rearview mirror basis L, Scratch(es), Smart repair | 110,64 |
|--|--------|





| | |
|---|--------|
| Bonnet, Scratch(es), LI - Repair and paint (complete) | 290,08 |
|---|--------|



| | |
|--|--------|
| Rearview mirror basis R, Scratch(es), Smart repair | 110,64 |
|--|--------|



| | |
|---|--------|
| Door F L, Chemical polution, LI - Repair and paint (complete) | 318,35 |
|---|--------|



| | |
|---|--------|
| Bumper F, Scratch(es), LI - Repair and paint (complete) | 211,80 |
|---|--------|



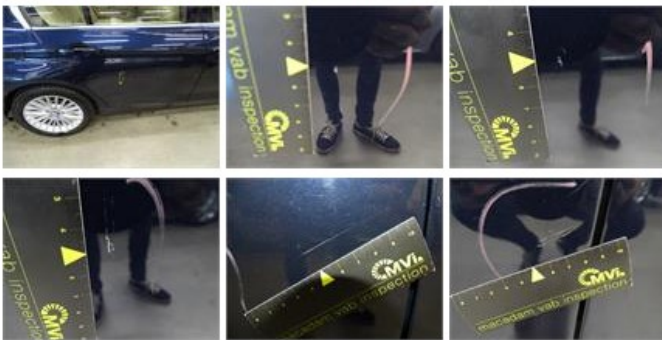
| | |
|-----------------------------------|------|
| Wing F L, Scratch(es), Acceptable | 0,00 |
|-----------------------------------|------|

| | |
|---|--------|
| Roof, Chemical polution, LI - Repair and paint (complete) | 481,50 |
|---|--------|

No pictures to display



Door R R, Scratch(es), LI - Repair and paint (complete) 318,35



Tailgate, Scratch(es), LI - Repair and paint (complete) 301,68



Alloy rim F R, Scratch(es), LI - Repair and paint (complete) 95,00

