


RENAULT CLIO: 1KPL045

| | | | |
|------------------------------------|--------------------------|--------------|--------------------------------------|
| Vinnumber: | VF15RJL0H53062236 | Versionname: | 1.5 ENERGY DCI 90E EXPRESSION |
| First Registrationdate: | 10/06/2015 | Fiscalpower: | |
| Expertise Mileage: | 99441 | Power Kw: | 66 |
| Bodytype: | Hatchback | Body color: | Red |
| Gearbox: | MAN 5 VIT | Paint type: | Metalic |
| Transmission: | Front | Rims summer: | Steel |
| Fueltype: | Diesel | Oil level: | OK |
| Battery functioning: | Yes | Parking lot: | 3224 |
| Number of doors: | 5 | | |
| Number of seats: | 5 | | |
| Number head rests: | 5 | | |
| Rims summer: | Steel | | |
| Category: | Passenger Car | | |
| Oil level: | OK | | |
| Registration Certificate Car (BE): | Yes | | |

Options

| | | | |
|--------------------------------|-------------------------------|----------------------|-------------------|
| GPS storage | HD | Luggage cover | |
| GPS storage | | Rear parking sensors | |
| Windows electric F | | Type of Tow bar | No Tow bar |
| Cruise Control | | | |
| Steering wheel multifunctional | | | |
| Radio multimedia | | | |
| Type of headlighting | Headlighting Halogen | | |
| Type of GPS | GPS big screen color | | |
| Type of Lining | Lining fabrics | | |
| Type of climate control | Manual climate control | | |

Limited Technical Inspection

| | | | |
|---------------------|-----------|---------------------|------------|
| Airco functioning | OK | Battery functioning | Yes |
| Tires wear profile | OK | Power steering | Yes |
| Idle position | OK | Sound engine | OK |
| Engine startingtime | OK | Clutch test | OK |
| Exhaust gass | OK | Wiper fluid level | OK |
| Handbrake | OK | Transmission | OK |
| | | Lighting | OK |
| | | Wiperblades | OK |

Degree of wear

| | | | | |
|---------------|-----------------------------|-----------------------|-------|-----------------------|
| | 185/65/15/92 V Steel | | | |
| Winter tyres: | Fr.L. | Michelin: 3 mm | Fr.R. | Michelin: 3 mm |
| | Re.L. | Michelin: 5 mm | Re.R. | Michelin: 5 mm |

Assistance equipment

| | | | |
|--|------------|------------|------------|
| Repair kit | Yes | Compressor | Yes |
| Number of charging cables (normal) | 0 | | |
| Number of charging cables (rapid charge) | 0 | | |

| | |
|---|---------|
| Total cost ex VAT | 1382,80 |
| Wheel cover F R, Scratch(es), E - Replace | 24,00 |



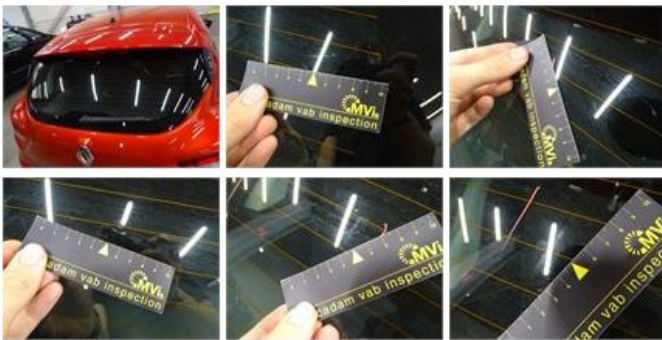
Door R R, Bad repair, Acceptable

0,00



Rear window, Scratch(es), Acceptable

0,00



Wheel cover R L, Scratch(es), E - Replace

24,00



Bonnet, Stone chip(s), Acceptable

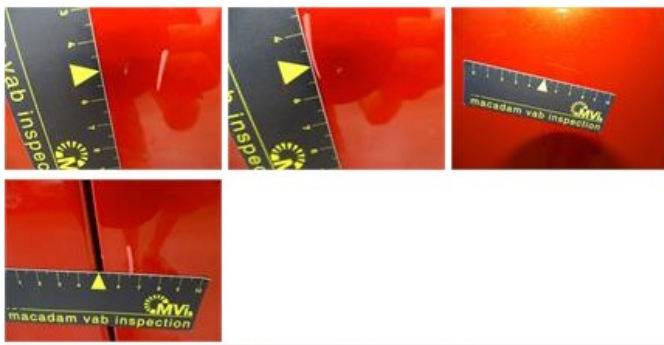
0,00

No pictures to display

Door F R, Dent(s) and scratch(es), LI - Repair and paint (complete)

254,68





Wing R L, Scratch(es), LI - Repair and paint (complete)

246,56



Bumper R, Scratch(es), LI - Repair and paint (complete)

169,44



Door R L, Scratch(es), LI - Repair and paint (complete)

254,68



Wing F L, Scratch(es), Acceptable

0,00

No pictures to display

Door F L, Scratch(es), Acceptable

0,00

No pictures to display

Bumper F, Scratch(es), LI - Repair and paint (complete)

169,44



| | |
|---------------------------------------|--------|
| Floor covering F L, Hole, E - Replace | 240,00 |
|---------------------------------------|--------|



| | |
|--|------|
| Rearview mirror housing L, Scratch(es), Acceptable | 0,00 |
|--|------|

No pictures to display

| | |
|--------------------------------------|------|
| Rear spoiler, Bad repair, Acceptable | 0,00 |
|--------------------------------------|------|

