



**OPEL Movano 3500 MWB Med.High Roof: 1GGX567**

Vinnumber:	<b>WOLMRFESCEB049647</b>	Versionname:	<b>MOVANO 3500 B/F L2H2 ecoFL.(E5)125PK</b>
First Registrationdate:	<b>5/02/2014</b>	Fiscalpower:	
Expertise Mileage:	<b>107292</b>	Power Kw:	<b>92</b>
Bodytype:	<b>Transporter</b>	Body color:	<b>Red</b>
Gearbox:	<b>MAN 6 VIT</b>	Paint type:	<b>Metalic</b>
Transmission:		Rims summer:	<b>Steel</b>
Fueltype:	<b>Diesel</b>	Oil level:	<b>OK</b>
Battery functioning:	<b>Yes</b>	Parking lot:	<b>TRU11</b>
Number of doors:	<b>5</b>		
Number of seats:	<b>3</b>		
Number head rests:	<b>3</b>		
Rims summer:	<b>Steel</b>		
Category:	<b>Light Commercial Vehicle</b>		
Oil level:	<b>OK</b>		
Registration Certificate Car (BE):	<b>Yes</b>		

**Options**

Radio CD		Central consol F	
Windows electric F		Front parking sensors	
Radio multimedia		Rear parking sensors	
Type of headlighting	<b>Headlighting Halogen</b>	Type of Tow bar	<b>No Tow bar</b>
Type of GPS	<b>No GPS</b>		
Type of Lining	<b>Lining fabrics</b>		
Type of climate control	<b>Manual climate control</b>		

**Limited Technical Inspection**

Airco functioning	<b>OK</b>	Battery functioning	<b>Yes</b>
Tires wear profile	<b>OK</b>	Power steering	<b>Yes</b>
Idle position	<b>OK</b>	Sound engine	<b>OK</b>
Engine startingtime	<b>OK</b>	Clutch test	<b>OK</b>
Exhaust gass	<b>OK</b>	Wiper fluid level	<b>OK</b>
Handbrake	<b>OK</b>	Transmission	<b>OK</b>
		Lighting	<b>OK</b>
		Wiperblades	<b>OK</b>

**Degree of wear**

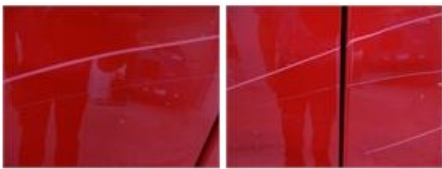
<b>225/65/16/112 R Steel</b>				
Summer tyres:	Fr.L.	<b>Uniroyal: 5 mm</b>	Fr.R.	<b>Uniroyal: 5 mm</b>
	Re.L.	<b>Michelin: 6 mm</b>	Re.R.	<b>Michelin: 6 mm</b>

**Assistance equipment**

Spare wheel	<b>Yes</b>
-------------	------------

Total cost ex VAT	751,53
Door F R, Dent(s) and scratch(es), LI - Repair and paint (complete)	238,76





Floor covering F L, Hole, E - Replace	237,00
---------------------------------------	--------



Bumper F, Scratch(es), Smart repair	110,64
-------------------------------------	--------



Door R R, Dent(s), Acceptable	0,00
-------------------------------	------

No pictures to display

Wing F R, Dent(s) and scratch(es), LI - Repair and paint (complete)	165,13
---	--------



Wing F L, Scratch(es), Acceptable	0,00
-----------------------------------	------

No pictures to display