



**VOLKSWAGEN Polo: 1DLV477**

Vinnumber:	<b>WVWZZZ6RZDY005165</b>	Versionname:	<b>POLO Comfortline DPF 75PK</b>
First Registrationdate:	<b>19/06/2012</b>	Fiscalpower:	
Expertise Mileage:	<b>188026</b>	Power Kw:	<b>55</b>
Bodytype:	<b>Hatchback</b>	Body color:	<b>White</b>
Gearbox:	<b>MAN 5 VIT</b>	Paint type:	<b>Metalic</b>
Transmission:		Rims summer:	<b>Steel</b>
Fueltype:	<b>Diesel</b>	Oil level:	<b>OK</b>
Battery functioning:	<b>Yes</b>	Parking lot:	<b>1113</b>
Number of doors:	<b>5</b>		
Number of seats:	<b>5</b>		
Number head rests:	<b>5</b>		
Rims summer:	<b>Steel</b>		
Category:	<b>Passenger Car</b>		
Oil level:	<b>OK</b>		

**Options**

Radio CD		Luggage cover	
Windows electric F		Type of Tow bar	<b>No Tow bar</b>
Windows electric R			
Type of headlighting	<b>Headlighting Halogen</b>		
Type of GPS	<b>No GPS</b>		
Type of Lining	<b>Lining fabrics</b>		
Type of climate control	<b>Autom climate control</b>		

**Limited Technical Inspection**

Airco functioning	<b>OK</b>	Battery functioning	<b>Yes</b>
Tires wear profile	<b>OK</b>	Power steering	<b>Yes</b>
Idle position	<b>OK</b>	Sound engine	<b>OK</b>
Engine startingtime	<b>OK</b>	Clutch test	<b>OK</b>
Exhaust gass	<b>OK</b>	Wiper fluid level	<b>OK</b>
Handbrake	<b>OK</b>	Transmission	<b>OK</b>
		Lighting	<b>OK</b>
		Wiperblades	<b>OK</b>

**Degree of wear**

	<b>185/60/15/88 T Steel</b>			
Winter tyres:	Fr.L.	<b>Semperit: 5 mm</b>	Fr.R.	<b>Semperit: 5 mm</b>
	Re.L.	<b>Semperit: 6 mm</b>	Re.R.	<b>Semperit: 6 mm</b>

**Assistance equipment**

Spare wheel	<b>Yes</b>	Jack	<b>Yes</b>
-------------	------------	------	------------

Total cost ex VAT	<b>913,48</b>
-------------------	---------------

Luggage space cover, Incomplete, Repair/replace (lump sum)	<b>20,00</b>
------------------------------------------------------------	--------------



Wheel cover F R, Scratch(es), E - Replace	<b>24,00</b>
-------------------------------------------	--------------



Bumper F, Scratch(es), LI - Repair and paint (complete) 169,44



Bumper R, Scratch(es), LI - Repair and paint (complete) 169,44



Wing F L, Scratch(es), LI - Repair and paint (complete) 176,14



Tailgate, Scratch(es), Acceptable 0,00

No pictures to display

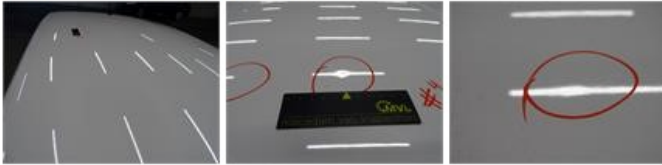
Maintenance book, Missing, E - Replace 0,00

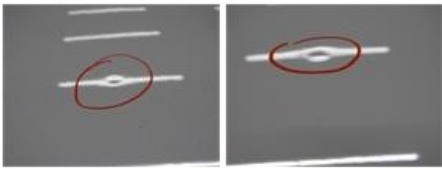
No pictures to display

Wheel cover F L, Scratch(es), Acceptable 0,00

No pictures to display

Roof, Dent(s), PDR - Paintless dent repair 122,40





Bonnet, Dent(s) and scratch(es), LI - Repair and paint (complete)

232,06

