



**AUDI A6 AVANT: 1KTK613**

Vinnumber:	<b>WAUZZZ4G2GN031401</b>	Versionname:	<b>2.0 TDI ULTRA 110KW S TRONIC</b>
First Registrationdate:	<b>30/06/2015</b>	Fiscalpower:	
Expertise Mileage:	<b>105462</b>	Power Kw:	<b>110</b>
Bodytype:	<b>Break</b>	Body color:	<b>Brown</b>
Gearbox:	<b>Automatic</b>	Paint type:	<b>Metalic</b>
Transmission:	<b>Front</b>	Rims summer:	<b>Aluminium</b>
Fueltype:	<b>Diesel</b>	Oil level:	<b>OK</b>
Battery functioning:	<b>Yes</b>	Parking lot:	<b>4407</b>
Number of doors:	<b>5</b>		
Number of seats:	<b>5</b>		
Number head rests:	<b>5</b>		
Rims summer:	<b>Aluminium</b>		
Category:	<b>Passenger Car</b>		
Oil level:	<b>OK</b>		
Registration Certificate Car (BE):	<b>Yes</b>		

**Options**

Radio CD	Central consol F
Windows electric F	Luggage cover
Windows electric R	Front parking sensors
Cruise Control	Rear parking sensors
Steering wheel multifunctional	Type of Tow bar
Seats F heated	<b>Tow bar fixed</b>
Radio multimedia	
Type of headlighting	<b>Headlighting Xenon</b>
Type of GPS	<b>GPS big screen color</b>
Type of Lining	<b>Lining leather</b>
Type of climate control	<b>Autom climate control</b>

**Limited Technical Inspection**

Airco functioning	<b>OK</b>	Battery functioning	<b>Yes</b>
Tires wear profile	<b>OK</b>	Power steering	<b>Yes</b>
Idle position	<b>OK</b>	Sound engine	<b>OK</b>
Engine startingtime	<b>OK</b>	Clutch test	<b>OK</b>
Exhaust gass	<b>OK</b>	Wiper fluid level	<b>OK</b>
Handbrake	<b>OK</b>	Transmission	<b>OK</b>
		Lighting	<b>OK</b>
		Wiperblades	<b>OK</b>

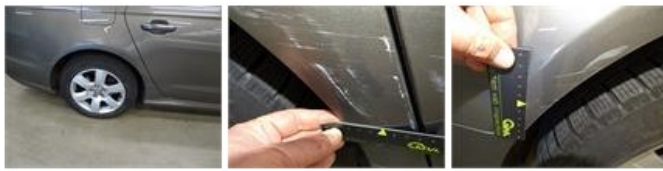
**Degree of wear**

<b>225/55/17/97 H LightMetal</b>				
Winter tyres:	Fr.L.	<b>Michelin: 5 mm</b>	Fr.R.	<b>Michelin: 5 mm</b>
	Re.L.	<b>Michelin: 5 mm</b>	Re.R.	<b>Michelin: 5 mm</b>

**Assistance equipment**

Repair kit	<b>Yes</b>	Compressor	<b>Yes</b>
Number of charging cables (normal)	<b>0</b>		
Number of charging cables (rapid charge)	<b>0</b>		

<b>Total cost ex VAT</b>	<b>1531,81</b>
<b>Wing R R, Scratch(es), LI - Repair and paint (complete)</b>	<b>369,84</b>



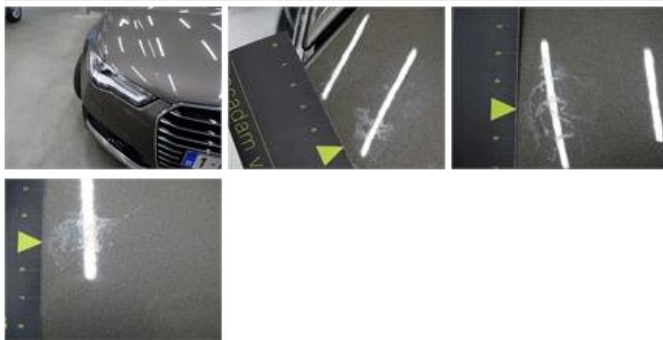
Bumper R, Scratch(es), LI - Repair and paint (complete)

254,16



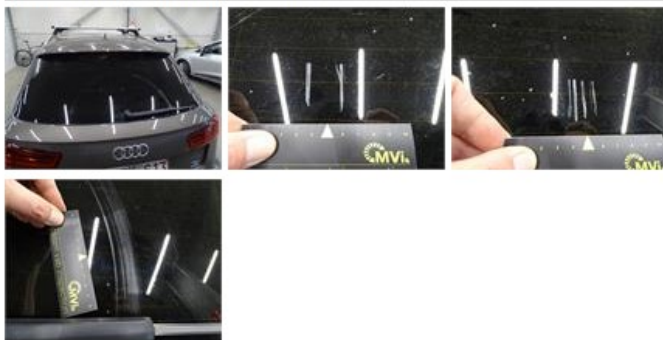
Bonnet, Chemical polution, LI - Repair and paint (complete)

348,09



Rear window, Scratch(es), E - Replace

0,00



Bumper F, Scratch(es), LI - Repair and paint (complete)

254,16



Alloy rim F R, Scratch(es), LI - Repair and paint (complete)

95,00



Windscreen, Scratch(es), E - Replace

0,00



Door R R, Scratch(es), It - Spot repair

115,56



Alloy rim R L, Scratch(es), LI - Repair and paint (complete)

95,00

