



**OPEL Corsa: 1HLR519**

Vinnumber:	<b>W0L0SDL68E4279383</b>	Versionname:	<b>CORSA BER ECOTEC Essentia FAP 75PK</b>
First Registrationdate:	<b>21/08/2014</b>	Fiscalpower:	
Expertise Mileage:	<b>204542</b>	Power Kw:	<b>55</b>
Bodytype:	<b>Hatchback</b>	Body color:	<b>Light Grey</b>
Gearbox:	<b>MAN 5 VIT</b>	Paint type:	<b>Metalic</b>
Transmission:		Rims summer:	<b>Steel</b>
Fueltype:	<b>Diesel</b>	Oil level:	<b>OK</b>
Battery functioning:	<b>Yes</b>	Parking lot:	<b>1726</b>
Number of doors:	<b>5</b>		
Number of seats:	<b>5</b>		
Number head rests:	<b>4</b>		
Rims summer:	<b>Steel</b>		
Category:	<b>Passenger Car</b>		
Oil level:	<b>OK</b>		
Registration Certificate Car (BE):	<b>Yes</b>		

**Options**

Radio CD	Luggage cover	
Windows electric F	Type of Tow bar	<b>No Tow bar</b>
Steering wheel multifunctional		
Radio multimedia		
Type of headlighting	<b>Headlighting Halogen</b>	
Type of GPS	<b>No GPS</b>	
Type of Lining	<b>Lining fabrics</b>	
Type of climate control	<b>Manual climate control</b>	

**Limited Technical Inspection**

Airco functioning	<b>OK</b>	Battery functioning	<b>Yes</b>
Tires wear profile	<b>OK</b>	Power steering	<b>Yes</b>
Idle position	<b>OK</b>	Sound engine	<b>OK</b>
Engine startingtime	<b>OK</b>	Clutch test	<b>OK</b>
Exhaust gass	<b>OK</b>	Wiper fluid level	<b>OK</b>
Handbrake	<b>OK</b>	Transmission	<b>OK</b>
		Lighting	<b>OK</b>
		Wiperblades	<b>OK</b>

**Degree of wear**

	<b>185/70/14/88 T Steel</b>			
Summer tyres:	Fr.L.	<b>Michelin: 4 mm</b>	Fr.R.	<b>Michelin: 4 mm</b>
	Re.L.	<b>Continental: 3 mm</b>	Re.R.	<b>Continental: 3 mm</b>

**Assistance equipment**

Spare wheel	<b>Yes</b>
-------------	------------

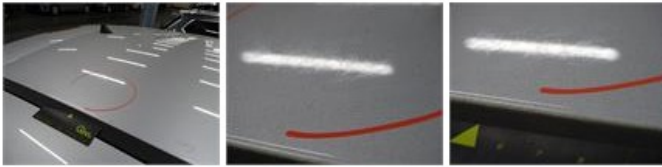
Total cost ex VAT	1481,82
-------------------	---------

Floor covering F L, Worn, E - Replace	240,00
---------------------------------------	--------



Bumper F, Scratch(es), Acceptable	0,00
-----------------------------------	------

Roof, Chemical pollution, LI - Repair and paint (complete) 385,20



Interior, Dirty, Cleaning 50,00



Rocker panel inner R R, Dent(s), LI - Repair and paint (complete) 115,56



Wheel cover F R, Missing, E - Replace 24,00



Bonnet, Dent(s) and scratch(es), LI - Repair and paint (complete) 232,06



Wheel cover R R, Scratch(es), Acceptable 0,00

No pictures to display

Wing F L, Scratch(es), Acceptable 0,00

No pictures to display

Ignition key, Missing, E - Replace 150,00



Bumper R, Scratch(es), LI - Repair and paint (complete) 169,44





Rocker panel inner R L, Dent(s), LI - Repair and paint (complete)

115,56

