



## VOLKSWAGEN CADDY: 1PSX484

Vinnumber:	<b>WV2ZZZ2KZHX027549</b>	Versionname:	<b>2.0 CRTDI 75KW SCR BMT MAXI TRENDLINE</b>
First Registrationdate:	<b>9/09/2016</b>	Fiscalpower:	
Expertise Mileage:	<b>193571</b>	Power Kw:	<b>75</b>
Bodytype:	<b>Transporter</b>	Body color:	<b>Grey</b>
Gearbox:	<b>MAN 5 VIT</b>	Paint type:	<b>Metalic</b>
Transmission:	<b>Front</b>	Rims summer:	<b>Steel</b>
Fueltype:	<b>Diesel</b>	Oil level:	<b>OK</b>
Battery functioning:	<b>Yes</b>	Parking lot:	<b>2222</b>
Number of doors:	<b>5</b>		
Number of seats:	<b>5</b>		
Number head rests:	<b>5</b>		
Rims summer:	<b>Steel</b>		
Category:	<b>Light Commercial Vehicle</b>		
Oil level:	<b>OK</b>		
Registration Certificate Car (BE):	<b>Yes</b>		

## Options

Windows electric F	Central consol F
Cruise Control	Rear parking sensors
Radio multimedia	Type of Tow bar
Type of headlighting	<b>Headlighting Halogen</b>
Type of GPS	<b>No GPS</b>
Type of Lining	<b>Lining fabrics</b>
Type of climate control	<b>Manual climate control</b>
	<b>No Tow bar</b>

## Limited Technical Inspection

Airco functioning	<b>OK</b>	Battery functioning	<b>Yes</b>
Tires wear profile	<b>OK</b>	Power steering	<b>Yes</b>
Idle position	<b>OK</b>	Sound engine	<b>OK</b>
Engine startingtime	<b>OK</b>	Clutch test	<b>OK</b>
Exhaust gass	<b>OK</b>	Wiper fluid level	<b>OK</b>
Handbrake	<b>OK</b>	Transmission	<b>OK</b>
		Lighting	<b>OK</b>
		Wiperblades	<b>OK</b>

## Degree of wear

	<b>205/55/16/91 H Steel</b>			
Winter tyres:	Fr.L.	<b>Continental: 2 mm</b>	Fr.R.	<b>Continental: 2 mm</b>
	Re.L.	<b>Continental: 7 mm</b>	Re.R.	<b>Continental: 7 mm</b>

## Assistance equipment

Spare wheel	<b>Yes</b>	Jack	<b>Yes</b>
Number of charging cables (normal)	<b>0</b>		
Number of charging cables (rapid charge)	<b>0</b>		

Total cost ex VAT	1102,02
Wing F R, Scratch(es), Acceptable	0,00
<i>No pictures to display</i>	
Protection plate M, Hole, E - Replace	74,00



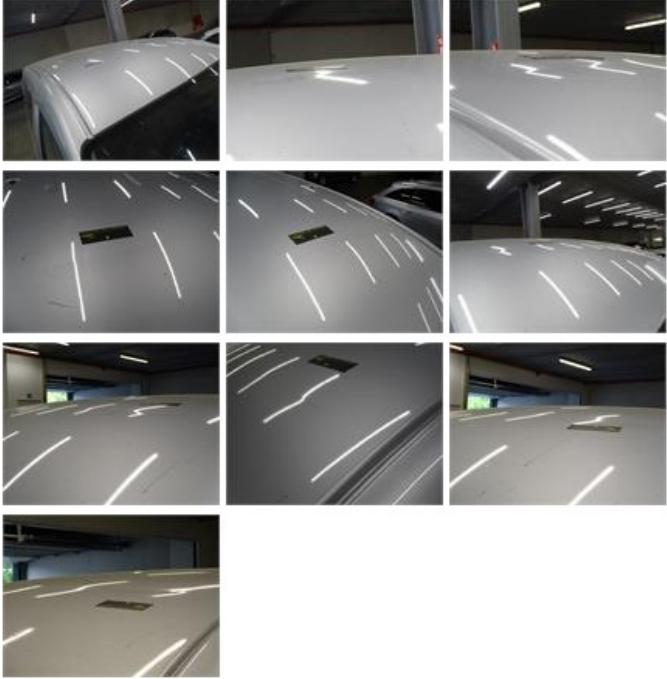
Internal Boot Lining R, Scratch(es), Acceptable 0,00

No pictures to display

Door F R, Scratch(es), Acceptable 0,00

No pictures to display

Roof, Dent(s) and scratch(es), LI - Repair and paint (complete) 409,13



Rear window, Scratch(es), Acceptable 0,00



Trunk lid covering R, Hole, Smart repair 110,64



Windscreen, Stone chip(s), E - Replace 0,00





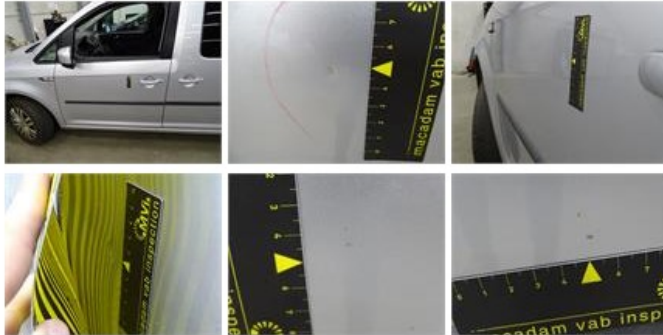
Door R R, Scratch(es), Acceptable 0,00

No pictures to display

Internal Boot Lining L, Scratch(es), Acceptable 0,00

No pictures to display

Door F L, Dent(s) and scratch(es), LI - Repair and paint (complete) 238,76



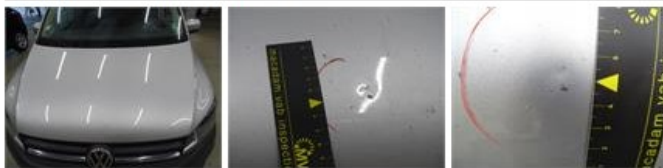
Wheel cover R L, Scratch(es), Acceptable 0,00

No pictures to display

Bumper R, Scratch(es), LI - Repair and paint (complete) 158,85



Bonnet, Stone chip(s), Acceptable 0,00



Wheel cover R R, Scratch(es), Acceptable 0,00

No pictures to display

Bumper F, Scratch(es), Smart repair 110,64



