


BMW 1 HATCH: JD6709

Vinnumber:	WBA1C710X0P841024	Versionname:	2.0 116D (85KW)
First Registrationdate:	1/03/2015	Fiscalpower:	
Expertise Mileage:	111473	Power Kw:	85
Bodytype:	Hatchback	Body color:	Black
Gearbox:	MAN 6 VIT	Paint type:	Metallic
Transmission:		Rims summer:	Aluminium
Fueltype:	Diesel	Oil level:	OK
Battery functioning:	Yes	Parking lot:	3215
Number of doors:	5		
Number of seats:	5		
Number head rests:	5		
Rims summer:	Aluminium		
Category:	Passenger Car		
Oil level:	OK		

Options

Radio CD	Central consol F
Windows electric F	Luggage cover
Windows electric R	Rear parking sensors
Cruise Control	Type of Tow bar
Steering wheel multifunctional	No Tow bar
Radio multimedia	
Type of headlighting	Headlighting Halogen
Type of GPS	GPS big screen color
Type of Lining	Lining fabrics
Type of climate control	Autom climate control

Limited Technical Inspection

Airco functioning	OK	Battery functioning	Yes
Tires wear profile	OK	Power steering	Yes
Idle position	OK	Sound engine	OK
Engine startingtime	OK	Clutch test	OK
Exhaust gass	OK	Wiper fluid level	OK
Handbrake	OK	Transmission	OK
		Lighting	OK
		Wiperblades	OK

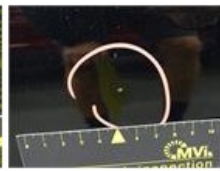
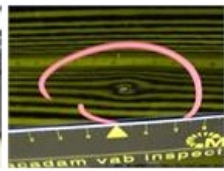
Degree of wear

	205/55/16/91 W LightMetal			
Summer tyres:	Fr.L.	Michelin: 6 mm	Fr.R.	Michelin: 6 mm
	Re.L.	Continental: 7 mm	Re.R.	Continental: 7 mm

Assistance equipment

Repair kit	Yes	Compressor	Yes
------------	------------	------------	------------

Total cost ex VAT	487,35
Alloy rim F R, Scratch(es), Acceptable	0,00
No pictures to display	
Wing R R, Dent(s), Acceptable	0,00
No pictures to display	
Door F R, Dent(s) and scratch(es), LI - Repair and paint (complete)	318,35



Bumper F R, Scratch(es), Acceptable	0,00
-------------------------------------	------

No pictures to display

Protection plate M, Tear, E - Replace	74,00
---------------------------------------	-------



Alloy rim R R, Scratch(es), LI - Repair and paint (complete)	95,00
--	-------

