


**BMW 5 TOURING: 1KRJ386**

Vinnumber:	<b>WBA5L31020G119931</b>	Versionname:	<b>2.0 520D (120KW) TOURING</b>
First Registrationdate:	<b>16/06/2015</b>	Fiscalpower:	
Expertise Mileage:	<b>103500</b>	Power Kw:	<b>120</b>
Bodytype:	<b>Break</b>	Body color:	<b>Dark Grey</b>
Gearbox:	<b>MAN 6 VIT</b>	Paint type:	<b>Metalic</b>
Transmission:		Rims summer:	<b>Aluminium</b>
Fueltype:	<b>Diesel</b>	Oil level:	<b>OK</b>
Battery functioning:	<b>Yes</b>	Parking lot:	<b>3333</b>
Number of doors:	<b>5</b>		
Number of seats:	<b>5</b>		
Number head rests:	<b>5</b>		
Rims summer:	<b>Aluminium</b>		
Category:	<b>Passenger Car</b>		
Oil level:	<b>OK</b>		
Registration Certificate Car (BE):	<b>Yes</b>		

**Options**

Radio CD		Central consol F	
Windows electric F		Luggage cover	
Windows electric R		Front parking sensors	
Cruise Control		Rear parking sensors	
Steering wheel multifunctional		Type of Tow bar	<b>Tow bar fixed</b>
Seats F heated			
Radio multimedia			
Type of headlighting	<b>Headlighting Halogen</b>		
Type of GPS	<b>GPS big screen color</b>		
Type of Lining	<b>Lining leather</b>		
Type of climate control	<b>Autom climate control</b>		

**Limited Technical Inspection**

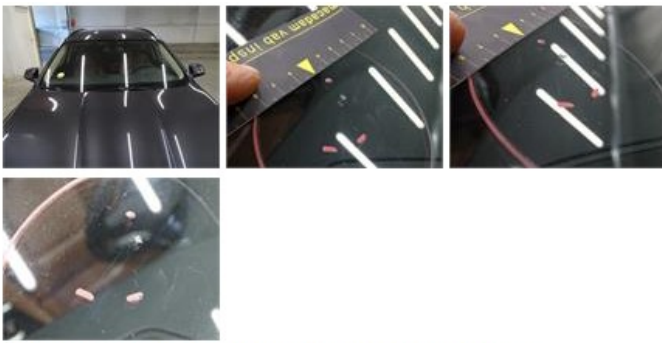
Airco functioning	<b>OK</b>	Battery functioning	<b>Yes</b>
Tires wear profile	<b>OK</b>	Power steering	<b>Yes</b>
Idle position	<b>OK</b>	Sound engine	<b>OK</b>
Engine startingtime	<b>OK</b>	Clutch test	<b>OK</b>
Exhaust gass	<b>OK</b>	Wiper fluid level	<b>OK</b>
Handbrake	<b>OK</b>	Transmission	<b>OK</b>
		Lighting	<b>OK</b>
		Wiperblades	<b>OK</b>

**Degree of wear**

	<b>225/55/17/97 Y LightMetal</b>			
Summer tyres:	Fr.L.	<b>Michelin: 3 mm</b>	Fr.R.	<b>Michelin: 3 mm</b>
	Re.L.	<b>Michelin: 4 mm</b>	Re.R.	<b>Michelin: 4 mm</b>

**Assistance equipment**

Repair kit	<b>Yes</b>	Compressor	<b>Yes</b>
Total cost ex VAT			<b>573,16</b>
Windscreen, Crack, E - Replace			<b>0,00</b>



Bumper F, Dent(s) and scratch(es), LI - Repair and paint (complete) 254,16



Ignition key, Missing, E - Replace 150,00

*No pictures to display*

Alloy rim F R, Scratch(es), LI - Repair and paint (complete) 95,00



Bumper R, Scratch(es), Acceptable 0,00

*No pictures to display*

Door R R, Dent(s), Acceptable 0,00

*No pictures to display*

Protection plate M, Tear, E - Replace 74,00

