



**MERCEDES CLA: 1LFB553**

Vinnumber:	<b>WDD1173121N287531</b>	Versionname:	<b>1.5 CLA 180 CDI</b>
First Registrationdate:	<b>10/09/2015</b>	Fiscalpower:	
Expertise Mileage:	<b>163295</b>	Power Kw:	<b>80</b>
Bodytype:	<b>Berline</b>	Body color:	<b>Black</b>
Gearbox:	<b>MAN 6 VIT</b>	Paint type:	<b>Metalic</b>
Transmission:	<b>Front</b>	Rims summer:	<b>Aluminium</b>
Fueltype:	<b>Diesel</b>	Oil level:	<b>OK</b>
Battery functioning:	<b>Yes</b>	Parking lot:	<b>2710</b>
Number of doors:	<b>4</b>		
Number of seats:	<b>5</b>		
Number head rests:	<b>1</b>		
Rims summer:	<b>Aluminium</b>		
Category:	<b>Passenger Car</b>		
Oil level:	<b>OK</b>		
Registration Certificate Car (BE):	<b>Yes</b>		

**Options**

Radio CD		Panoramic roof	
GPS storage	<b>SD</b>	Central consol F	
GPS storage		Front parking sensors	
Windows electric F		Rear parking sensors	
Windows electric R		Type of Tow bar	<b>No Tow bar</b>
Steering wheel multifunctional			
Seats F heated			
Radio multimedia			
Type of headlighting	<b>Headlighting Halogen</b>		
Type of GPS	<b>GPS big screen color</b>		
Type of Lining	<b>Lining leather</b>		
Type of climate control	<b>Manual climate control</b>		

**Limited Technical Inspection**

Airco functioning	<b>OK</b>	Battery functioning	<b>Yes</b>
Tires wear profile	<b>OK</b>	Power steering	<b>Yes</b>
Idle position	<b>OK</b>	Sound engine	<b>OK</b>
Engine startingtime	<b>OK</b>	Clutch test	<b>OK</b>
Exhaust gass	<b>OK</b>	Wiper fluid level	<b>OK</b>
Handbrake	<b>OK</b>	Transmission	<b>OK</b>
		Lighting	<b>OK</b>
		Wiperblades	<b>OK</b>

**Degree of wear**

<b>205/55/16/91 H LightMetal</b>				
Summer tyres:	Fr.L.	<b>Continental: 4 mm</b>	Fr.R.	<b>Continental: 4 mm</b>
	Re.L.	<b>Michelin: 5 mm</b>	Re.R.	<b>Michelin: 5 mm</b>

**Assistance equipment**

Repair kit	<b>Yes</b>	Compressor	<b>Yes</b>
Number of charging cables (normal)	<b>0</b>		
Number of charging cables (rapid charge)	<b>0</b>		

Total cost ex VAT	<b>2909,63</b>
Ignition key, Missing, E - Replace	<b>150,00</b>
<i>No pictures to display</i>	
Alloy rim F R, Scratch(es), LI - Repair and paint (complete)	<b>95,00</b>



Bumper F, Dent(s) and scratch(es), LI - Repair and paint (complete)

211,80



Wing R R, Dent(s) and scratch(es), LI - Repair and paint (complete)

308,20



Alloy rim R L, Scratch(es), LI - Repair and paint (complete)

95,00



Wing F R, Dent(s) and scratch(es), LI - Repair and paint (complete)

220,18



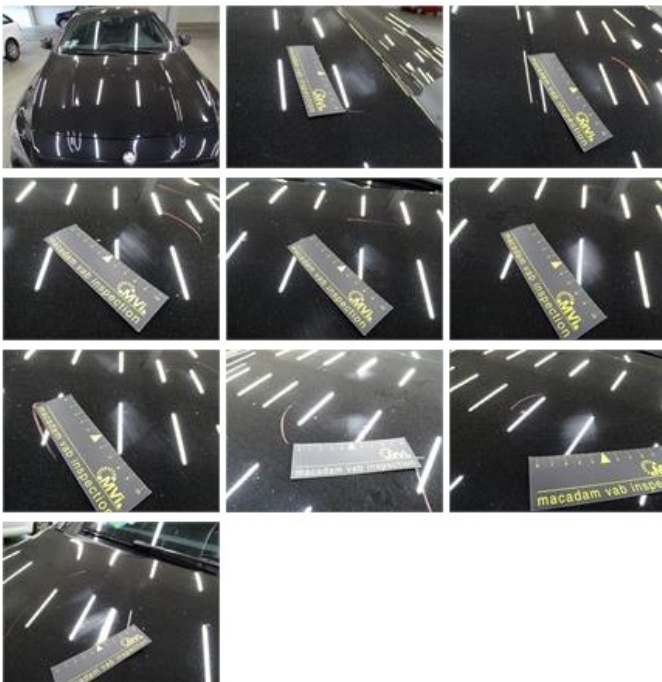
Door F L, Bad repair, Acceptable 0,00



Door R R, Dent(s) and scratch(es), LI - Repair and paint (complete) 318,35



Bonnet, Chemical polution, LI - Repair and paint (complete) 290,08



Door R L, Scratch(es), LI - Repair and paint (complete) 318,35



Backrest cover F R, Damaged, Smart repair 64,32



Tailgate, Scratch(es), Acceptable 0,00

No pictures to display

Alloy rim R R, Scratch(es), Acceptable 0,00

No pictures to display

Door F R, Dent(s) and scratch(es), LI - Repair and paint (complete)

318,35



Wing F L, Bad repair, Acceptable

0,00



Windscreen, Stone chip(s), Acceptable

0,00



Rearview mirror L complete, Scratch(es), Acceptable

0,00

No pictures to display

Bumper R, Dent(s) and scratch(es), LI - Repair and paint (complete)

211,80



Wing R L, Scratch(es), LI - Repair and paint (complete)

308,20

