



OPEL COMBO: 1PFL528

Vinnumber:	W0L6ZYC1AH9596131	Versionname:	1.3 CDTI 66KW 2.0T SWB
First Registrationdate:	23/06/2016	Fiscalpower:	
Expertise Mileage:	57017	Power Kw:	66
Bodytype:	Transporter	Body color:	Black
Gearbox:	MAN 5 VIT	Paint type:	Metalic
Transmission:		Rims summer:	Steel
Fueltype:	Diesel	Oil level:	OK
Battery functioning:	Yes	Parking lot:	LCV26
Number of doors:	4		
Number of seats:	2		
Number head rests:	2		
Rims summer:	Steel		
Category:	Light Commercial Vehicle		
Oil level:	OK		
Registration Certificate Car (BE):	Yes		

Options

Radio CD		Type of Tow bar	No Tow bar
Windows electric F			
Type of headlighting	Headlighting Halogen		
Type of GPS	No GPS		
Type of Lining	Lining fabrics		
Type of climate control	Manual climate control		

Limited Technical Inspection

Airco functioning	OK	Battery functioning	Yes
Tires wear profile	OK	Power steering	Yes
Idle position	OK	Sound engine	OK
Engine startingtime	OK	Clutch test	OK
Exhaust gass	OK	Wiper fluid level	NOT OK
Handbrake	OK	Transmission	OK
		Lighting	OK
		Wiperblades	OK

Degree of wear

185/65/15/92 T Steel				
Summer tyres:	Fr.L.	Goodyear: 4 mm	Fr.R.	Goodyear: 4 mm
	Re.L.	Goodyear: 6 mm	Re.R.	Goodyear: 6 mm

Assistance equipment

Spare wheel	Yes
-------------	------------

Total cost ex VAT	1140,10
-------------------	---------

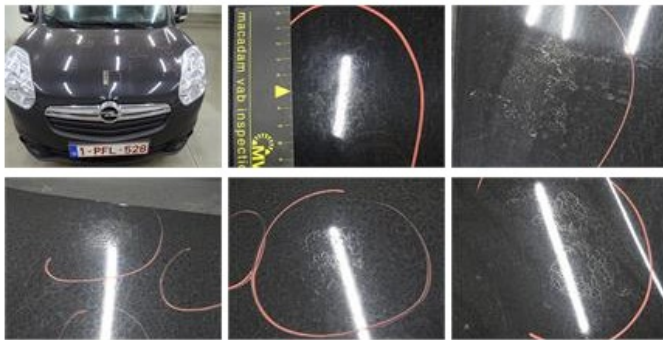
Wing F L, Scratch(es), LI - Repair and paint (complete)	165,13
---	--------





Bonnet, Chemical polution, LI - Repair and paint (complete)

217,56



Bodywork, Not original part, Acceptable

0,00

No pictures to display

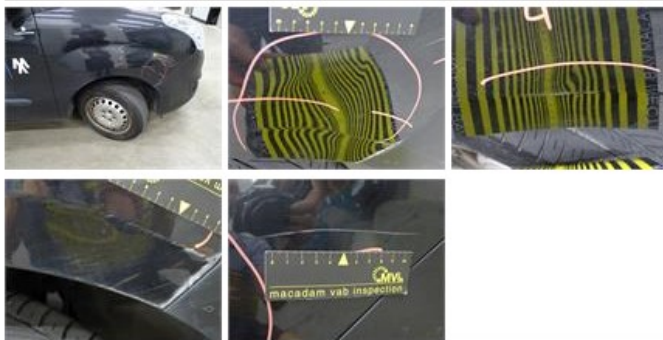
Wing R R, Dent(s) and scratch(es), LI - Repair and paint (complete)

231,15



Wing F R, Dent(s) and scratch(es), LI - Repair and paint (complete)

165,13



Roof, Chemical polution, LI - Repair and paint (complete)

361,13



Wing R L, Scratch(es), Acceptable

0,00

No pictures to display