



PEUGEOT 2008: 1HCY199

Vinnumber:	VF3CU9HP0EY072657	Versionname:	2008 e-HDi Allure 92PK
First Registrationdate:	20/06/2014	Fiscalpower:	
Expertise Mileage:	138587	Power Kw:	68
Bodytype:	SUV	Body color:	White
Gearbox:	MAN 5 VIT	Paint type:	Opaque
Transmission:	Front	Rims summer:	Aluminium
Fueltype:	Diesel	Oil level:	OK
Battery functioning:	Yes	Parking lot:	3126
Number of doors:	5		
Number of seats:	5		
Number head rests:	5		
Rims summer:	Aluminium		
Category:	Passenger Car		
Oil level:	OK		
Registration Certificate Car (BE):	Yes		

Options

GPS storage	HD	Panoramic roof	
GPS storage		Luggage cover	
Windows electric F		Front parking sensors	
Windows electric R		Rear parking sensors	
Cruise Control		Type of Tow bar	No Tow bar
Steering wheel multifunctional			
Radio multimedia			
Type of headlighting	Headlighting Halogen		
Type of GPS	GPS big screen color		
Type of Lining	Lining semi-leather		
Type of climate control	Autom climate control		

Limited Technical Inspection

Airco functioning	OK	Battery functioning	Yes
Tires wear profile	OK	Power steering	Yes
Idle position	OK	Sound engine	OK
Engine startingtime	OK	Clutch test	OK
Exhaust gass	OK	Wiper fluid level	OK
Handbrake	OK	Transmission	OK
		Lighting	OK
		Wiperblades	OK

Degree of wear

	205/50/17/93 H LightMetal			
Winter tyres:	Fr.L.	Goodyear: 4 mm	Fr.R.	Goodyear: 4 mm
	Re.L.	Michelin: 7 mm	Re.R.	Michelin: 7 mm

Assistance equipment

Emergency spare wheel	Yes	Jack	Yes
Number of charging cables (normal)	0		
Number of charging cables (rapid charge)	0		

Total cost ex VAT 2251,96

Alloy rim F L polished, Scratch(es), LI - Repair and paint (complete) 95,00



Bumper cover R M, Scratch(es), Acceptable 0,00

No pictures to display

Trunk lid covering R, Scratch(es), Acceptable 0,00

No pictures to display

Bumper corner R L, Scratch(es), Acceptable 0,00

No pictures to display

Door panel R R, Scratch(es), Smart repair 110,64



Sill trim R R, Scratch(es), Smart repair 110,64



Rocker panel inner F L, Dent(s), LI - Repair and paint (complete) 115,56



Door F L, Scratch(es), LI - Repair and paint (complete) 318,35



Bonnet, Chemical pollution, LI - Repair and paint (complete) 290,08





Floor covering F L, Hole, Smart repair

64,32



Wing R L, Scratch(es), LI - Repair and paint (complete)

308,20



Door panel R L, Scratch(es), Acceptable

0,00

No pictures to display

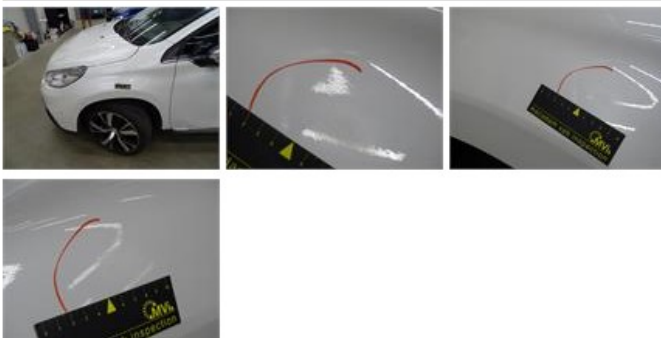
Door R R, Scratch(es), LI - Repair and paint (complete)

318,35



Wing F L, Scratch(es), LI - Repair and paint (complete)

220,18



Sill trim R L, Scratch(es), Smart repair

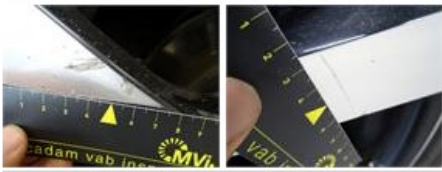
110,64



Alloy rim R R polished, Scratch(es), LI - Repair and paint (complete)

95,00





Alloy rim F R polished, Scratch(es), LI - Repair and paint (complete)

95,00



Bumper F, Scratch(es), Acceptable

0,00

No pictures to display