



**MERCEDES Sprinter 300: 1CQM184**

Vinnumber:	<b>WDB90663315653592</b>	Versionname:	<b>SPRINTER 313 B/F 3500kg MWB A2H1 129PK</b>
First Registrationdate:	<b>2/02/2012</b>	Fiscalpower:	
Expertise Mileage:	<b>171032</b>	Power Kw:	<b>95</b>
Bodytype:	<b>Transporter</b>	Body color:	<b>White</b>
Gearbox:	<b>MAN 6 VIT</b>	Paint type:	<b>Opaque</b>
Transmission:	<b>Back</b>	Rims summer:	<b>Steel</b>
Fueltype:	<b>Diesel</b>	Oil level:	<b>OK</b>
Battery functioning:	<b>Yes</b>	Parking lot:	<b>LCV18</b>
Number of doors:	<b>5</b>		
Number of seats:	<b>2</b>		
Number head rests:	<b>2</b>		
Rims summer:	<b>Steel</b>		
Category:	<b>Light Commercial Vehicle</b>		
Oil level:	<b>OK</b>		
Registration Certificate Car (BE):	<b>Yes</b>		

**Options**

Radio CD		Central consol F	
GPS storage	<b>CD</b>	Front parking sensors	
GPS storage		Rear parking sensors	
Windows electric F		Type of Tow bar	<b>Tow bar fixed</b>
Cruise Control			
Steering wheel multifunctional			
Radio multimedia			
Type of headlighting	<b>Headlighting Halogen</b>		
Type of GPS	<b>GPS big screen color</b>		
Type of Lining	<b>Lining fabrics</b>		
Type of climate control	<b>Manual climate control</b>		

**Limited Technical Inspection**

Airco functioning	<b>OK</b>	Battery functioning	<b>Yes</b>
Tires wear profile	<b>OK</b>	Power steering	<b>Yes</b>
Idle position	<b>OK</b>	Sound engine	<b>OK</b>
Engine startingtime	<b>OK</b>	Clutch test	<b>OK</b>
Exhaust gass	<b>OK</b>	Wiper fluid level	<b>OK</b>
Handbrake	<b>OK</b>	Transmission	<b>OK</b>
		Lighting	<b>OK</b>
		Wiperblades	<b>OK</b>

**Degree of wear**

<b>235/65/16/113 R Steel</b>				
Summer tyres:	Fr.L.	<b>Michelin: 7 mm</b>	Fr.R.	<b>Michelin: 7 mm</b>
	Re.L.	<b>Michelin: 6 mm</b>	Re.R.	<b>Michelin: 6 mm</b>

**Assistance equipment**

Spare wheel	<b>Yes</b>
Number of charging cables (normal)	<b>0</b>
Number of charging cables (rapid charge)	<b>0</b>

Total cost ex VAT	<b>1871,00</b>
Sill outer R, Dent(s) and scratch(es), LI - Repair and paint (complete)	<b>232,88</b>



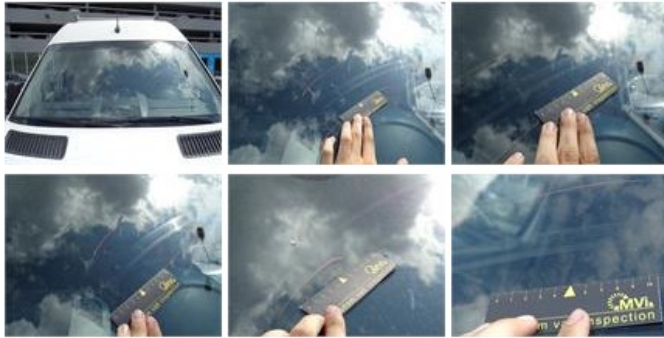
Sidewall RL (LCV), Dent(s) and scratch(es), Acceptable 0,00

No pictures to display

Wing R L, Rust, LI - Repair and paint (complete) 231,15



Windscreen, Scratch(es), E - Replace 395,40



Bodywork, Not original part, Acceptable 0,00



Wing R R, Rust, LI - Repair and paint (complete) 231,15



Sidewall RR (LCV), Scratch(es), Acceptable 0,00

No pictures to display

Bumper F, Scratch(es), Acceptable 0,00

No pictures to display

Wing F L, Scratch(es), Acceptable 0,00

No pictures to display

Roof, Rust, Acceptable 0,00

No pictures to display

Base F L, Dent(s) and scratch(es), LI - Repair and paint (complete) 231,15





Bonnet, Stone chip(s), Acceptable 0,00

No pictures to display

Bumper R, Scratch(es), Acceptable 0,00

No pictures to display

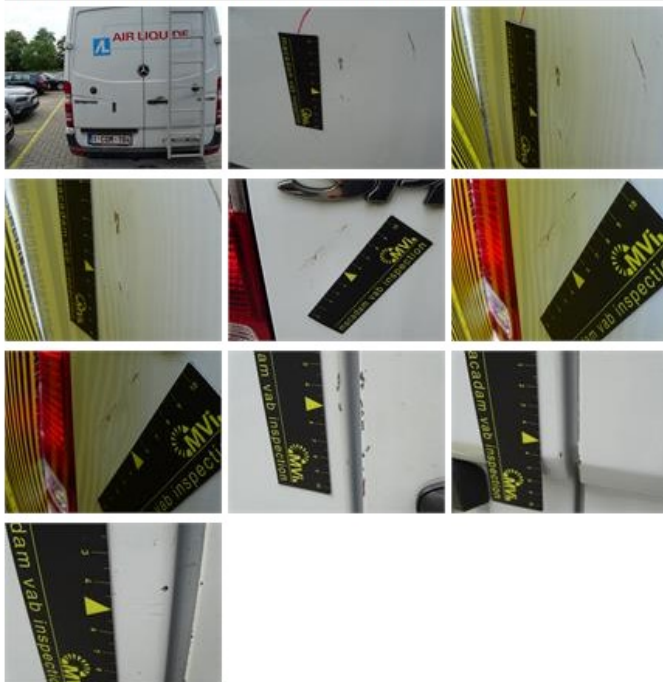
Bumper cover R M, Broken, Smart repair 110,64



Door R R, Scratch(es), Acceptable 0,00

No pictures to display

Tailgate, Dent(s) and scratch(es), LI - Repair and paint (complete) 362,02



Wing F R, Scratch(es), Acceptable 0,00

No pictures to display

Wing trim R R, Deformed / Strained, E - Replace 69,00

