



OPEL ZAFIRA TOURER: 1KNC238

Vinnumber:	W0LPD9E36F1061834	Versionname:	1.6 CDTI ECOFLEX 100KW S/S EDITION
First Registrationdate:	1/06/2015	Fiscalpower:	
Expertise Mileage:	81624	Power Kw:	100
Bodytype:	MPV	Body color:	Blue
Gearbox:	MAN 6 VIT	Paint type:	Metalic
Transmission:	Front	Rims summer:	Aluminium
Fueltype:	Diesel	Oil level:	OK
Battery functioning:	Yes	Parking lot:	4609
Number of doors:	5		
Number of seats:	7		
Number head rests:	7		
Rims summer:	Aluminium		
Category:	Passenger Car		
Oil level:	OK		
Registration Certificate Car (BE):	Yes		

Options

Radio CD		Central consol F	
GPS storage	HD	Luggage cover	
GPS storage		Front parking sensors	
Windows electric F		Rear parking sensors	
Windows electric R		Type of Tow bar	Tow bar removable
Cruise Control			
Steering wheel multifunctional			
Radio multimedia			
Type of headlighting	Headlighting Halogen		
Type of GPS	GPS big screen color		
Type of Lining	Lining fabrics		
Type of climate control	Autom climate control		

Limited Technical Inspection

Airco functioning	OK	Battery functioning	Yes
Tires wear profile	OK	Power steering	Yes
Idle position	OK	Sound engine	OK
Engine startingtime	OK	Clutch test	OK
Exhaust gass	OK	Wiper fluid level	OK
Handbrake	OK	Transmission	OK
		Lighting	OK
		Wiperblades	OK

Degree of wear

	215/60/16/99 H LightMetal			
Summer tyres:	Fr.L.	Michelin: 5 mm	Fr.R.	Michelin: 5 mm
	Re.L.	Continental: 5 mm	Re.R.	Continental: 5 mm

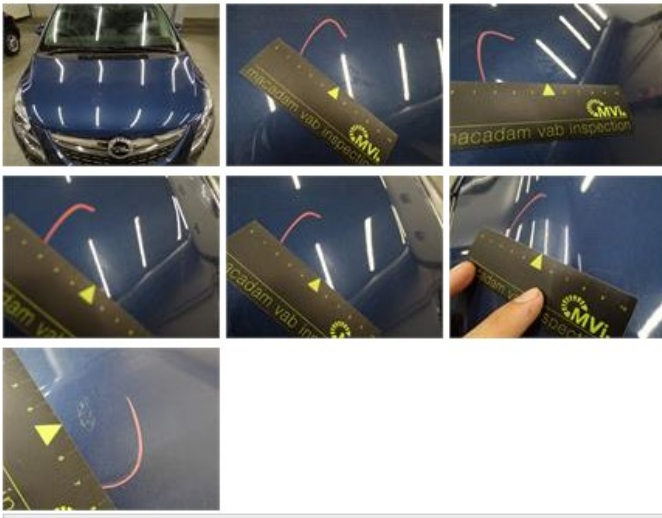
Assistance equipment

Emergency spare wheel	Yes	Jack	Yes
Number of charging cables (normal)	0		
Number of charging cables (rapid charge)	0		

Total cost ex VAT	1816,78
Bumper F, Crack, LI - Repair and paint (complete)	211,80



Bonnet, Chemical polution, LI - Repair and paint (complete)	290,08
---	--------



Rocker panel inner R L, Dent(s), Acceptable	0,00
<i>No pictures to display</i>	
Door R L, Scratch(es), Acceptable	0,00
<i>No pictures to display</i>	
Bumper R, Scratch(es), Acceptable	0,00
<i>No pictures to display</i>	
Roof pillar R, Chemical polution, Acceptable	0,00
<i>No pictures to display</i>	
Door F L, Dent(s) and scratch(es), LI - Repair and paint (complete)	318,35



Door R R, Dent(s) and scratch(es), LI - Repair and paint (complete)	318,35
---	--------





Rear window, Scratch(es), E - Replace

370,00



Rearview mirror housing R, Scratch(es), Acceptable

0,00

No pictures to display

Roof, Scratch(es), Acceptable

0,00

No pictures to display

Wing R L, Scratch(es), Acceptable

0,00

No pictures to display

Tailgate, Scratch(es), Acceptable

0,00

No pictures to display

Wing R R, Scratch(es), LI - Repair and paint (complete)

308,20

