



**VOLVO V70: 1FUJ993**

|                                    |                          |              |                             |
|------------------------------------|--------------------------|--------------|-----------------------------|
| Vinnumber:                         | <b>YV1BW8481E1295267</b> | Versionname: | <b>V70 D2 Kinetic 115PK</b> |
| First Registrationdate:            | <b>28/10/2013</b>        | Fiscalpower: |                             |
| Expertise Mileage:                 | <b>175380</b>            | Power Kw:    | <b>84</b>                   |
| Bodytype:                          | <b>Break</b>             | Body color:  | <b>Dark Grey</b>            |
| Gearbox:                           | <b>MAN 6 VIT</b>         | Paint type:  | <b>Metalic</b>              |
| Transmission:                      |                          | Rims summer: | <b>Aluminium</b>            |
| Fueltype:                          | <b>Diesel</b>            | Oil level:   | <b>OK</b>                   |
| Battery functioning:               | <b>Yes</b>               | Parking lot: | <b>4405</b>                 |
| Number of doors:                   | <b>5</b>                 |              |                             |
| Number of seats:                   | <b>5</b>                 |              |                             |
| Number head rests:                 | <b>5</b>                 |              |                             |
| Rims summer:                       | <b>Aluminium</b>         |              |                             |
| Category:                          | <b>Passenger Car</b>     |              |                             |
| Oil level:                         | <b>OK</b>                |              |                             |
| Registration Certificate Car (BE): | <b>Yes</b>               |              |                             |

**Options**

|                                |                              |                          |
|--------------------------------|------------------------------|--------------------------|
| Radio CD                       | Central consol F             |                          |
| Windows electric F             | Luggage cover                |                          |
| Windows electric R             | Rear parking sensors         |                          |
| Cruise Control                 | Type of Tow bar              | <b>Tow bar removable</b> |
| Steering wheel multifunctional |                              |                          |
| Seats F heated                 |                              |                          |
| Radio multimedia               |                              |                          |
| Type of headlighting           | <b>Headlighting Halogen</b>  |                          |
| Type of GPS                    | <b>No GPS</b>                |                          |
| Type of Lining                 | <b>Lining leather</b>        |                          |
| Type of climate control        | <b>Autom climate control</b> |                          |

**Limited Technical Inspection**

|                     |           |                     |            |
|---------------------|-----------|---------------------|------------|
| Airco functioning   | <b>OK</b> | Battery functioning | <b>Yes</b> |
| Tires wear profile  | <b>OK</b> | Power steering      | <b>Yes</b> |
| Idle position       | <b>OK</b> | Sound engine        | <b>OK</b>  |
| Engine startingtime | <b>OK</b> | Clutch test         | <b>OK</b>  |
| Exhaust gass        | <b>OK</b> | Wiper fluid level   | <b>OK</b>  |
| Handbrake           | <b>OK</b> | Transmission        | <b>OK</b>  |
|                     |           | Lighting            | <b>OK</b>  |
|                     |           | Wiperblades         | <b>OK</b>  |

**Degree of wear**

|                                  |       |                       |       |                       |
|----------------------------------|-------|-----------------------|-------|-----------------------|
| <b>225/50/17/98 W LightMetal</b> |       |                       |       |                       |
| Summer tyres:                    | Fr.L. | <b>Kleber: 5 mm</b>   | Fr.R. | <b>Kleber: 5 mm</b>   |
|                                  | Re.L. | <b>Michelin: 6 mm</b> | Re.R. | <b>Michelin: 6 mm</b> |

**Assistance equipment**

|                                  |            |      |                |
|----------------------------------|------------|------|----------------|
| Emergency spare wheel            | <b>Yes</b> | Jack | <b>Yes</b>     |
| Total cost ex VAT                |            |      | <b>1375,02</b> |
| Bull bar R, Missing, E - Replace |            |      | <b>5,00</b>    |



Alloy rim F R, Scratch(es), LI - Repair and paint (complete)

95,00



Bull bar F, Missing, E - Replace

5,00



Floor covering F L, Hole, E - Replace

264,00



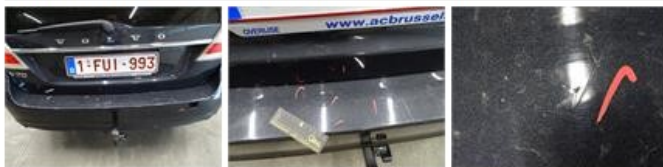
Maintenance book, Missing, E - Replace

0,00

No pictures to display

Bumper R, Scratch(es), LI - Repair and paint (complete)

254,16



Door R L, Scratch(es), LI - Repair and paint (complete)

382,02



Wing R L, Scratch(es), LI - Repair and paint (complete)

369,84



Alloy rim R L, Scratch(es), Acceptable

0,00

No pictures to display