



BMW 1 HATCH: 1KJN671

Vinnumber:	WBA1S510805A81424	Versionname:	2.0 118D (100KW)
First Registrationdate:	12/05/2015	Fiscalpower:	
Expertise Mileage:	137099	Power Kw:	100
Bodytype:	Hatchback	Body color:	Grey
Gearbox:	MAN 6 VIT	Paint type:	Metalic
Transmission:	Back	Rims summer:	Aluminium
Fueltype:	Diesel	Oil level:	OK
Battery functioning:	Yes	Parking lot:	2821
Number of doors:	5		
Number of seats:	5		
Number head rests:	5		
Rims summer:	Aluminium		
Category:	Passenger Car		
Oil level:	OK		
Registration Certificate Car (BE):	Yes		

Options

Radio CD		Central consol F	
GPS storage		Luggage cover	
GPS storage	HD	Rear parking sensors	
Windows electric F		Type of Tow bar	No Tow bar
Windows electric R			
Cruise Control			
Steering wheel multifunctional			
Radio multimedia			
Type of headlighting	Headlighting LED		
Type of GPS	GPS big screen color		
Type of Lining	Lining leather		
Type of climate control	Autom climate control		

Limited Technical Inspection

Airco functioning	OK	Battery functioning	Yes
Tires wear profile	OK	Power steering	Yes
Idle position	OK	Sound engine	OK
Engine startingtime	OK	Clutch test	OK
Exhaust gass	OK	Wiper fluid level	OK
Handbrake	OK	Transmission	OK
		Lighting	OK
		Wiperblades	OK

Degree of wear

	205/55/16/91 V LightMetal			
Summer tyres:	Fr.L.	Pirelli: 6 mm	Fr.R.	Pirelli: 6 mm
	Re.L.	Pirelli: 6 mm	Re.R.	Pirelli: 6 mm

Assistance equipment

Number of charging cables (normal)	0	Runflat	Yes
Number of charging cables (rapid charge)	0		

Total cost ex VAT	1555,74
--------------------------	----------------

Door R L, Scratch(es), Acceptable	0,00
-----------------------------------	-------------

No pictures to display

Wing R R, Dent(s), Acceptable	0,00
-------------------------------	-------------

No pictures to display

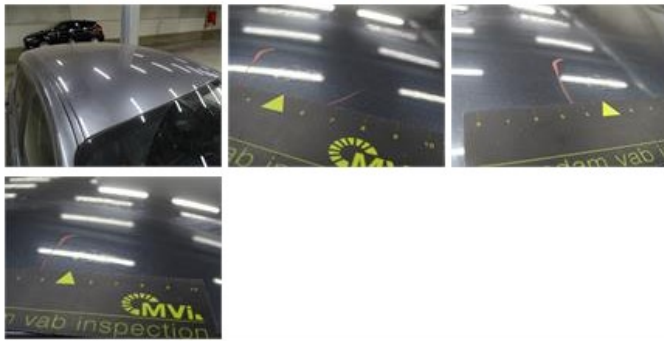
Rear window, Scratch(es), Acceptable	0,00
--------------------------------------	-------------



Tailgate, Scratch(es), Acceptable 0,00

No pictures to display

Roof, Chemical polution, LI - Repair and paint (complete) 481,50



Bumper R, Scratch(es), LI - Repair and paint (complete) 211,80



Bumper F, Dent(s) and scratch(es), LI - Repair and paint (complete) 211,80



Wing R L, Scratch(es), Acceptable 0,00

No pictures to display

Door F R, Scratch(es), Acceptable 0,00

No pictures to display

Alloy rim R R, Scratch(es), LI - Repair and paint (complete) 95,00

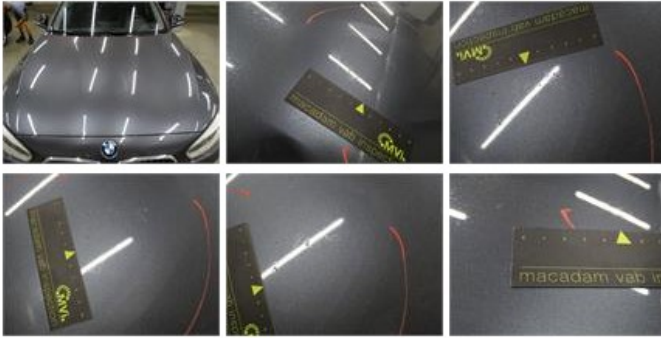




Alloy rim F R, Scratch(es), Acceptable 0,00

No pictures to display

Bonnet, Chemical pollution, LI - Repair and paint (complete) 290,08



Rear spoiler, Chemical pollution, LI - Repair and paint (complete) 115,56



Ignition key, Missing, E - Replace 150,00

No pictures to display