


BMW 518: 1JXZ786

Vinnumber:	WBA5E310X0D672855	Versionname:	DIESEL
First Registrationdate:	17/03/2015	Fiscalpower:	
Expertise Mileage:	85215	Power Kw:	100
Bodytype:	Berline	Body color:	Grey
Gearbox:	MAN 6 VIT	Paint type:	Metalic
Transmission:	Back	Rims summer:	Aluminium
Fueltype:	Diesel	Oil level:	OK
Maintenance:	OVER 5000 KM	Parking lot:	LCV
Maintenance:	OK		
Battery functioning:	Yes		
Number of doors:	4		
Number of seats:	5		
Number head rests:	5		
Rims summer:	Aluminium		
Category:	Passenger Car		
Oil level:	OK		
Registration Certificate Car (BE):	Yes		

Options

Radio CD		Seats electric F L	
TV/DVD screen F		Seats electric F R	
GPS storage		Central consol F	
GPS storage	HD	Luggage cover	
Windows electric F		Front parking sensors	
Windows electric R		Rear parking sensors	
Cruise Control		Type of Tow bar	No Tow bar
Steering wheel multifunctional			
Radio multimedia			
Type of headlighting	Headlighting Xenon		
Type of GPS	GPS big screen color		
Type of Lining	Lining leather		
Type of climate control	Autom climate control		

Limited Technical Inspection

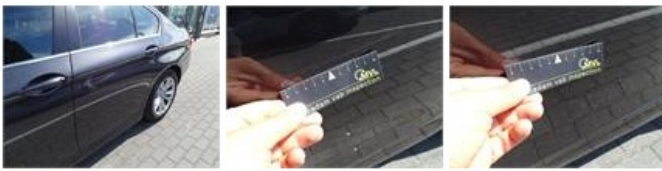
Airco functioning	OK	Battery functioning	Yes
Tires wear profile	OK	Power steering	Yes
Idle position	OK	Sound engine	OK
Engine startingtime	OK	Clutch test	OK
Exhaust gass	OK	Wiper fluid level	OK
Handbrake	OK	Transmission	OK
		Lighting	OK
		Wiperblades	OK

Degree of wear

225/55/17/97 Y LightMetal				
Summer tyres:	Fr.L.	Michelin: 5 mm	Fr.R.	Michelin: 5 mm
	Re.L.	Vredestein: 7 mm	Re.R.	Vredestein: 7 mm

Assistance equipment

Repair kit	Yes	Compressor	Yes
Total cost ex VAT			654,84
Door R L, Dent(s) and scratch(es), Acceptable			0,00



Bumper R, Scratch(es), Acceptable 0,00



Bumper F, Scratch(es), Acceptable 0,00



Wing R L, Scratch(es), LI - Repair and paint (complete) 369,84



Alloy rim R R, Scratch(es), LI - Repair and paint (complete) 95,00



Alloy rim R L, Scratch(es), LI - Repair and paint (complete) 95,00



Tailgate, Scratch(es), Acceptable 0,00



Alloy rim F R, Scratch(es), LI - Repair and paint (complete) 95,00

