


**OPEL Astra: 1HHY836**

Vinnumber:	<b>WOLPE6E65EG090517</b>	Versionname:	<b>ASTRA BER ecoFLEX Cosmo Star St/St 110PK</b>
First Registrationdate:	<b>29/07/2014</b>	Fiscalpower:	
Expertise Mileage:	<b>81580</b>	Power Kw:	<b>81</b>
Bodytype:	<b>Hatchback</b>	Body color:	<b>Black</b>
Gearbox:	<b>MAN 6 VIT</b>	Paint type:	<b>Metalic</b>
Transmission:	<b>Front</b>	Rims summer:	<b>Aluminium</b>
Fueltype:	<b>Diesel</b>	Oil level:	<b>OK</b>
Battery functioning:	<b>Yes</b>	Parking lot:	<b>1731</b>
Number of doors:	<b>5</b>		
Number of seats:	<b>5</b>		
Number head rests:	<b>5</b>		
Rims summer:	<b>Aluminium</b>		
Category:	<b>Passenger Car</b>		
Oil level:	<b>OK</b>		
Registration Certificate Car (BE):	<b>Yes</b>		

**Options**

Radio CD		Central consol F	
GPS storage		Luggage cover	
GPS storage	<b>HD</b>	Front parking sensors	
Windows electric F		Rear parking sensors	
Windows electric R		Type of Tow bar	<b>No Tow bar</b>
Cruise Control			
Steering wheel multifunctional			
Seats F heated			
Radio multimedia			
Type of headlighting	<b>Headlighting Xenon</b>		
Type of GPS	<b>GPS big screen color</b>		
Type of Lining	<b>Lining leather</b>		
Type of climate control	<b>Autom climate control</b>		

**Limited Technical Inspection**

Airco functioning	<b>OK</b>	Battery functioning	<b>Yes</b>
Tires wear profile	<b>OK</b>	Power steering	<b>Yes</b>
Idle position	<b>OK</b>	Sound engine	<b>OK</b>
Engine startingtime	<b>OK</b>	Clutch test	<b>OK</b>
Exhaust gass	<b>OK</b>	Wiper fluid level	<b>OK</b>
Handbrake	<b>OK</b>	Transmission	<b>OK</b>
		Lighting	<b>OK</b>
		Wiperblades	<b>OK</b>

**Degree of wear**

	<b>225/50/17/98 H LightMetal</b>			
Winter tyres:	Fr.L.	<b>Continental: 5 mm</b>	Fr.R.	<b>Continental: 5 mm</b>
	Re.L.	<b>Bridgestone: 7 mm</b>	Re.R.	<b>Bridgestone: 7 mm</b>

**Assistance equipment**

Repair kit	<b>Yes</b>	Compressor	<b>Yes</b>
Number of charging cables (normal)	<b>0</b>		
Number of charging cables (rapid charge)	<b>0</b>		

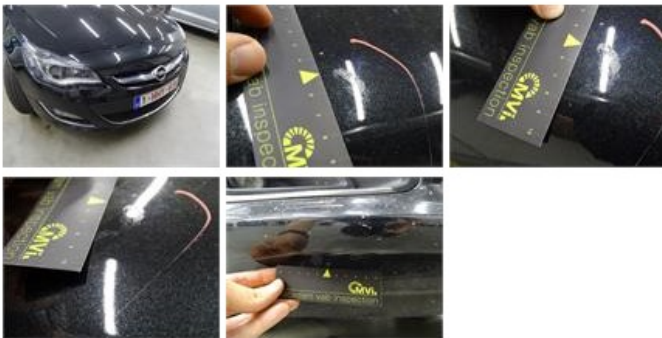
Total cost ex VAT	3468,43
Roof, Chemical polution, LI - Repair and paint (complete)	481,50



Rearview mirror housing R, Scratch(es), LI - Repair and paint (complete) 115,56



Bumper F, Chemical pollution, LI - Repair and paint (complete) 211,80



Wing R L, Dent(s) and scratch(es), LI - Repair and paint (complete) 308,20



Rear spoiler, Chemical pollution, LI - Repair and paint (complete) 115,56



Wing R R, Dent(s) and scratch(es), LI - Repair and paint (complete) 308,20



Door F L, Scratch(es), LI - Repair and paint (complete) 318,35

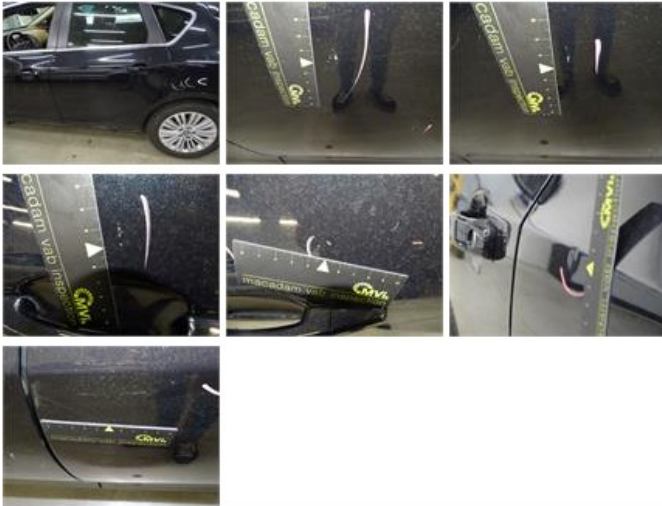




Door R R, Scratch(es), Acceptable 0,00

No pictures to display

Door R L, Dent(s) and scratch(es), LI - Repair and paint (complete) 318,35



Bonnet, Chemical polution, LI - Repair and paint (complete) 290,08



Door F R, Scratch(es), LI - Repair and paint (complete) 318,35



Bumper R, Scratch(es), LI - Repair and paint (complete) 211,80





Tailgate, Dent(s) and scratch(es), LI - Repair and paint (complete) 301,68



Protection plate M, Hole, E - Replace 74,00



Alloy rim F R, Scratch(es), LI - Repair and paint (complete) 95,00



Wing F L, Scratch(es), Acceptable 0,00

No pictures to display