



FORD S Max: 1FWF214

Vinnnumber:	WF0SXXGBWSDK76352	Versionname:	S-MAX Trend Style St/St DPF 115PK
First Registrationdate:	15/11/2013	Fiscalpower:	
Expertise Mileage:	149566	Power Kw:	85
Bodytype:	MPV	Body color:	Silver
Gearbox:	MAN 6 VIT	Paint type:	Metalic
Transmission:	Front	Rims summer:	Aluminium
Fueltype:	Diesel	Oil level:	OK
Battery functioning:	Yes	Parking lot:	2819
Number of doors:	5		
Number of seats:	7		
Number head rests:	7		
Rims summer:	Aluminium		
Category:	Passenger Car		
Oil level:	OK		
Registration Certificate Car (BE):	Yes		

Options

Radio CD		Central consol F	
GPS storage		Luggage cover	
GPS storage	HD	Front parking sensors	
Windows electric F		Rear parking sensors	
Windows electric R		Type of Tow bar	No Tow bar
Cruise Control			
Steering wheel multifunctional			
Radio multimedia			
Type of headlighting	Headlighting Halogen		
Type of GPS	GPS big screen color		
Type of Lining	Lining fabrics		
Type of climate control	Autom climate control		

Limited Technical Inspection

Airco functioning	OK	Battery functioning	Yes
Tires wear profile	OK	Power steering	Yes
Idle position	OK	Sound engine	OK
Engine startingtime	OK	Clutch test	OK
Exhaust gass	OK	Wiper fluid level	OK
Handbrake	OK	Transmission	OK
		Lighting	OK
		Wiperblades	OK

Degree of wear

	225/50/17/98 H LightMetal			
Winter tyres:	Fr.L.	Bridgestone: 5 mm	Fr.R.	Bridgestone: 5 mm
	Re.L.	Bridgestone: 5 mm	Re.R.	Bridgestone: 5 mm

Assistance equipment

Repair kit	Yes	Compressor	Yes
Number of charging cables (normal)	0		
Number of charging cables (rapid charge)	0		

Total cost ex VAT	1454,03
Rear bulkhead lining, Broken, E - Replace	15,00



Alloy rim R R, Scratch(es), LI - Repair and paint (complete)

95,00



Door R R, Dent(s) and scratch(es), LI - Repair and paint (complete)

382,02



Door F R, Scratch(es), Acceptable

0,00

No pictures to display

Alloy rim F L, Scratch(es), Acceptable

0,00

No pictures to display

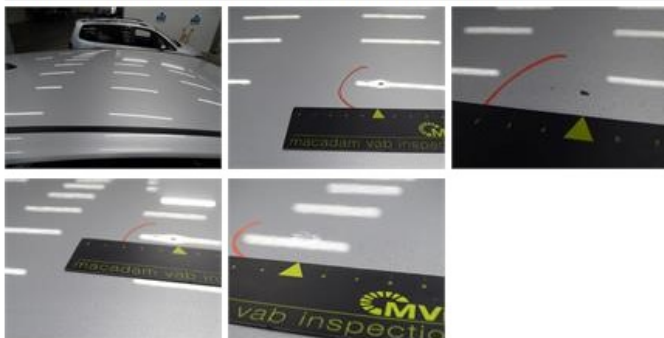
Bumper R, Scratch(es), Acceptable

0,00

No pictures to display

Roof, Dent(s) and scratch(es), LI - Repair and paint (complete)

577,80



Tailgate, Scratch(es), Acceptable

0,00

No pictures to display

Wing F R, Dent(s) and scratch(es), LI - Repair and paint (complete)

384,21





Bumper F, Stone chip(s), Acceptable	0,00
<i>No pictures to display</i>	
Door F L, Scratch(es), Acceptable	0,00
<i>No pictures to display</i>	
Wing R L, Scratch(es), Acceptable	0,00
<i>No pictures to display</i>	