



RENAULT Kangoo Express: 1EFP546			
Vinnumber:	VF1FW14C548065783	Versionname:	KANGOO Expr. B/F PLC Gr.Conf.(EU5)75PK
First Registrationdate:	19/11/2012	Fiscalpower:	
Expertise Mileage:	92628	Power Kw:	55
Bodytype:		Body color:	White
Gearbox:	MAN 5 VIT	Paint type:	Opaque
Transmission:	Front	Rims summer:	Steel
Fueltype:	Diesel	Oil level:	OK
Battery functioning:	Yes	Parking lot:	4433
Number of doors:	5		
Number of seats:	2		
Number head rests:	2		
Rims summer:	Steel		
Category:	Light Commercial Vehicle		
Oil level:	OK		

Options			
Radio CD		Type of Tow bar	No Tow bar
Windows electric F			
Radio multimedia			
Type of headlighting	Headlighting Halogen		
Type of GPS	No GPS		
Type of Lining	Lining fabrics		
Type of climate control	Manual climate control		

Limited Technical Inspection			
Airco functioning	OK	Battery functioning	Yes
Tires wear profile	OK	Power steering	Yes
Idle position	OK	Sound engine	OK
Engine startingtime	OK	Clutch test	OK
Exhaust gass	OK	Wiper fluid level	OK
Handbrake	OK	Transmission	OK
		Lighting	OK
		Wiperblades	OK

Degree of wear				
	195/65/15/95 T Steel			
Summer tyres:	Fr.L.	Michelin: 3 mm	Fr.R.	Michelin: 3 mm
	Re.L.	Michelin: 3 mm	Re.R.	Michelin: 3 mm

Assistance equipment			
Emergency spare wheel	Yes	Jack	Yes
Number of charging cables (normal)	0		
Number of charging cables (rapid charge)	0		

Total cost ex VAT	2150,53
Bumper F, Scratch(es), LI - Repair and paint (complete)	158,85



Wheel cover R L, Deformed / Strained, Acceptable	0,00
---	-------------

Wing R R, Scratch(es), It - Spot repair 115,56



Dashboard, Scratch(es), Smart repair 110,64



Roof, Rust, LI - Repair and paint (complete) 361,13



Door F L, Scratch(es), LI - Repair and paint (complete) 238,76



Bodywork, Not original part, Acceptable 0,00

No pictures to display

Wing F R, Scratch(es), It - Spot repair 115,56



Ignition key, Missing, E - Replace 150,00

No pictures to display

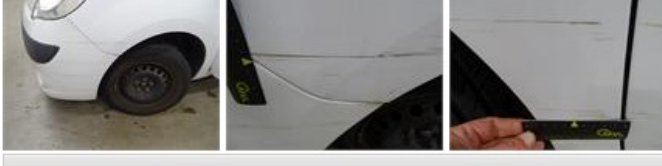
Trunk door R R, Dent(s) and scratch(es), Acceptable 0,00

No pictures to display

Bonnet, Dent(s) and scratch(es), LI - Repair and paint (complete) 217,56



Wing F L, Scratch(es), It - Spot repair 115,56



Floor covering F L, Hole, E - Replace 237,00



Headlight L, Deformed / Strained, Acceptable

0,00

No pictures to display

Inner door handle F L, Broken, E - Replace

33,00



Bumper R, Scratch(es), LI - Repair and paint (complete)

158,85



Sliding door R, Scratch(es), It - Spot repair

115,56



Wheel cover F L, Missing, E - Replace

22,50

